

COUNTRYAIRCHECK weekly

February 17, 2026, Issue 999

Borchetta On Big Machine 2.0

Last week's simultaneous departure of Chairman/CEO **Scott Borchetta** from the HYBE-owned **BMLG** and launch of his two-imprint, one-promotion team **new entity** raised many questions. HYBE's plans began to come into focus with this morning's announcement of the Jake Basden-headed Blue Highway Records ([Breaking News 2/17](#)). As for **Nashville Harbor** and the new **Big Machine**, Borchetta answers many of the top-of-mind questions below.



Scott Borchetta

CA: You're getting to clean-slate a label design for the first time since you launched the original Big Machine. How does it look different in 2025? How is it the same?

SB: Well to begin, we have a running start! Twenty-plus years of doing, learning, evolving, and now with the ability to hit a total reset. I feel 100 pounds lighter. When a company matures and becomes as big as it is now with a huge finance department, royalty accounting, legal, etc., there was so much operationally that took up my day. Now, with our new agreement with HYBE, I outsource most of those responsibilities to them. And I know all the players ... as I hired them! They're amazing. But now I don't have to manage the operation. We will be able to escape so many hurdles that we had to learn as a startup. We know what we need, and we know how to get it.

Regarding how it looks different in 2026, it's completely different! The only constants that are the same from 20 years ago are great artists, great music and figuring out how to build the fanbase. Jennifer Nettles of Sugarland said something so simple but profound several years back when the sea change of social media was really washing over us: "It used to be, someone would hear my music and want to know more about me ... now, they want to know about me before they'll listen to the music!" That is so true. Our entire value structure has changed, and therefore new and exciting financial opportunities lay elsewhere in addition to the music.

How difficult were the decisions around staff and artists?

Anytime you lose people and go through the seismic shift we all just experienced, it's incredibly difficult. That team was magical together and they truly care for each other in a really beautiful way. During our year-end meetings in December, we all knew change was coming, but we didn't know what it would be nor how it would look. When I walked into the big

(continued on page 7)



Howdy Valentine's: Mercury's **Priscilla Block** celebrates Valentine's Day with **Gage Picotte** and husband/KSCS/Dallas' **Al Farb** and the label's **John Trapanese** (l-r) at Billy Bob's.

Q4 CDM Drivetime Leaders

Following the [analysis](#) of the format's Q4 drive-time leaders in PPM markets last month, **Country Aircheck** has also compiled Country's top performers for the quarter from **Nielsen Audio's** 44 Continuous Diary Measurement (CDM) markets. **Cumulus** ceased subscribing to **Nielsen** effective with this release, so several stations, including last quarter's leaders in mornings (**WIVK/Knoxville**) and afternoons (**WKKO/Toledo**) no longer appear.

With **WIVK** absent after leading morning drive for the past seven quarters, **WUSY/Chattanooga** claims the top share in the daypart for the first time since Q1 2022, thanks in part to a 9.0 to 10.1 jump. **WUSY's Ken**

(continued on page 3)

©2026 Country Aircheck™ — All rights reserved. Sign up free at www.countryaircheck.com. Send news to news@countryaircheck.com

JASON ALDEAN
HOW FAR DOES A GOODBYE GO
IT GOES ALL THE WAY TO #1!
BB: #1 CA #1

BBR BMG

What If We Don't

Ashley McBryde

Impacting Now!



Hicks was in between co-hosts during the quarter, with Brand Mgr. **Justin Cole** temporarily filling the role. **WHKO/Dayton's Nancy Wilson** and **Woody** hold on to the runner up spot, while **KXKT/Omaha's Steve Lundy** and **Gina Melton** leap back into the top 10 to claim the bronze.

With a 12.6 share, WUSY takes the top spot in afternoon drive as well, a position **Mo & Styckman** last claimed in Q4 2024. **WHKO** and **KXKT** invert their positions from mornings to afternoons, with the latter's **Erik "EJ" Johnson** taking second with a 10.5 and **WHKO's Jake Ryan** landing third with an 8.8. Previous results here: [Q3](#); [Q2](#) and [Q1 2024](#). – Chris Huff

Chart Chat

Congratulations to **Jason Aldean**, **Lee Adams**, **Shelley Hargis**, **Dawn Ferris**, **Scotty O'Brien** and the **Broken Bow** promotion team on taking "How Far Does A Goodbye Go" to No. 1. This is Aldean's 31st visit to the top, which puts him in a tie with Blake Shelton for seventh most all-time. The song's 32,312 points for the week is the most for any song since Morgan Wallen's "I'm The Problem" pulled 32,607 last May. Songwriters are **Kurt Allison**, **John Edwards**, **Tully Kennedy** and **John Morgan**.



Jason Aldean

Kudos to **Ryan Dokke** and the **Nashville Harbor** crew on racking up 82 adds for **The Band Perry's** "Psychological." This is the act's sixth release to top the CA/MB Add Board, and first since "Live Forever" in August 2015.

News & Notes

Audacy will serve as the exclusive U.S. sales and distribution representative for **Sonos Radio's** streaming inventory. Sonos Radio's more than 100 stations will also be distributed on the Audacy platform, including the Audacy app and website, and other platforms including Google Home, Alexa and Apple Music.

Opry Entertainment Group (OEG) has been awarded an 11-year management agreement for CCNB Amphitheatre at Heritage Park in Simpsonville, SC, a 14,000-capacity open-air venue. As part of the agreement, which began February 10, OEG will invest at least \$6 million in capital over the course of the initial five years.

Country Thunder Music Festivals, Big Valley Jamboree and Premier Global Productions Pres. **Troy Vollhoffer** was honored by the **TJ Martell Foundation** Jan. 28 at the annual Los Angeles Wine Dinner for advancing the foundation's mission of finding a cure for cancer.

Townsquare Media/Northwest Michigan AE **Jessica Reid** has been selected as **Mentoring & Inspiring Women in Radio, Inc.'s** 2026 MIW Digital Mentee. Also, StreamGuys VP/Digital Sales & Strategy **Dara Kalvort** will serve as the program's 2026 Digital Lead Mentor.

Music services and sync company **Freedom Music Group** has opened a Nashville office. The company represents more than 100 producers, songwriters and artists, and more than 10 record labels and publishers, including **Wrensong Entertainment** and **Compass Records**.

Trace Adkins reprises his role as MercyMe artist manager Scott Brickell in *I Can Only Imagine 2*, in theaters Feb. 20. A sequel to the 2018 biopic, the new film tells the story behind the band's single "Even If." Watch the trailer [here](#).

Megan Moroney will be honored with the Artist Spotlight by **She Is The Music** at the group's Feb. 18 *Sharing the Spotlight* event in Los Angeles, celebrating impactful women in the music industry.

Lee Brice, **David Tolliver** and **Billy Montana** are part of a new campaign, "Sound Bites," for the **Tennessee Department of Tourist Development** that features Tennessee chefs and artists collaborating to create new dishes and original songs. The three artists spotlight East Tennessee with their ad. Watch [here](#).

Chris Stapleton and **Buffalo Trace Distillery** have launched Traveller Whiskey Full Proof, the brand's first line extension since its 2024 debut. Traveller's 121-proof release was revealed in a [social media video](#) featuring NASCAR Hall of Famer **Dale Earnhardt Jr.**, Stapleton and NASCAR driver **Justin Allgaier**.

P12+ Share, Mon-Fri 6am-10am, Oct-Dec 2025



Q3	Q4			
6	1	WUSY/Chattanooga	Ken Hicks with Justin Cole	10.1
2	2	WHKO/Dayton	New Country Mornings with Nancy Wilson and Woody	9.8
--	3	KXKT/Omaha	Steve & Gina	8.9
--	4	KUZZ/Bakersfield	Brent & Ness In The Morning	8.7
7	5	WZZK/Birmingham	The Rick Burgess Show	8.6
5	6	WYRK/Buffalo	Clay & Company	8.0
--	7	KSSN/Little Rock	The Bobby Bones Show	7.8
-	8	WCOS/Columbia	The Morning Rush with Jonathon Rush & Kelly Nash	7.7
--	9	WBCT/Grand Rapids	B93 Morning Show	7.4
--	10	WDRM/Huntsville	The Spencer Graves Show	7.1

Source: Nielsen Audio; Subscribing stations only

P12+ Share, Mon-Fri 3pm-7pm, Oct-Dec 2025

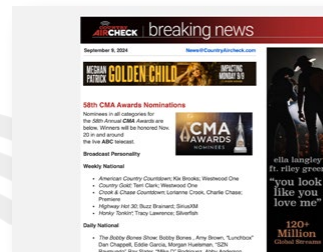


Q3	Q4			
2	1	WUSY/Chattanooga	Mo & Styckman	12.6
4	2	KXKT/Omaha	Erik "EJ" Johnson	10.5
7	3	WHKO/Dayton	Jake Ryan	8.8
--	4	KUZZ/Bakersfield	Kenn McCloud	8.7
--	5	KSSN/Little Rock	Bo Dalton	8.6
6	6	WYRK/Buffalo	Brett Alan	8.2
--	7	WCOS/Columbia	Andy Woods	7.6
-	8	KHEY/El Paso	Amber Banda	7.4
5	9	WBCT/Grand Rapids	Dave Taft	7.3
--	10+	WBBS/Syracuse	Shanna	7.2
--	10+	WGNA/Albany, NY	Matty Jeff	7.2

Source: Nielsen Audio; Subscribing stations only

GOT NEWS?

Send to news@countryaircheck.com.





CITRINCOOPERMAN®

KBFM IS NOW CITRIN COOPERMAN

We handle the business so clients can
focus on what counts – the creative.

ACCOUNTING | TAX | ADVISORY



Nashville, Tennessee

CITRINCOOPERMAN.COM | INFO@CITRINCOOPERMAN.COM



Julien's Auctions has partnered with **Gibson Gives** for an autographed guitar charity auction that includes instruments signed by **Willie Nelson, Brantley Gilbert, Parker McCollum, Riley Green, Cody Jinks** and others. It takes place March 5 beginning at 10am PT [here](#). Funds raised will benefit the Gibson Gives & FirstBank Amphitheater Music Education Program.

Jamey Johnson will headline the **Nashville Ballet's** 37th annual *Ballet Ball* March 7 at the Schermerhorn Symphony Center. Tickets [here](#).

Music historian and author **Don Cusic** will give two lectures at Nashville's Historic RCA Studio B in partnership with the **Nashville Historical Foundation**. The first, on March 4, will focus on **Chet Atkins** and the second, on March 24, is about **Elvis Presley**. Admission is \$10 per lecture; register [here](#).

Vince Gill, Travis Tritt, Mandy Barnett, Rhonda Vincent and **Steven Curtis Chapman** have been added to the lineup for the Feb. 23 **The Gatlin Brothers' 70th Anniversary Tribute** at Nashville's Ryman Auditorium ([CAW 1/26](#)). Tickets [here](#).

Nashville's 34th annual **Tin Pan South Songwriters Festival**, taking place March 24-28, has selected charity partner **ShowerUp**, which provides showers, laundry, hygiene necessities and personal care to those experiencing homelessness and those in need. Find festival tickets (3/3) [here](#).

The Week's Top Stories

Full coverage at [countryaircheck.com](#).

- **Scott Borchetta** [split](#) from **HYBE America**, along with several staffers. (2/12-13)
- **Dave Thomas** was [named](#) PD/morning host for **WSIG/Harrisonburg, VA**. (2/11)
- **WFRG/Utica, NY's Dave "Wheels" Wheeler** [departed](#). (2/10)
- **Valory Pres. George Briner** [retired](#). (2/9)
- **iHeartMedia's Bill Stewart** was [named](#) **Tucson** SVPP. (2/9)
- **Dane Schmidt, Jordan Marcus** and **Jude**

OFF THE RECORD

Tape Room Music and Red Light Management-signed **Beau Bailey** takes **Country Aircheck** through the experience of having his first two radio singles, Blake Shelton's "Stay Country Or Die Tryin'" and Hardy's "Favorite Country Song" (both released on April 11, 2025), go No. 1 last month. Bailey's songs have also been cut by Kane Brown, Dylan Marlowe, Parmalee, Cole Swindell, Hudson Westbrook and others.

It was definitely crazy how it all shaped up at the same time. It's just God doing his thing. I believed in myself as much as I possibly could, but there's always a little part of you [in doubt] until something seals the deal. It's nice to have proof of concept that it really is possible for me, because I've seen all my friends do it.

I checked their position every morning as soon as I got up as both songs were climbing the charts. Me and my buddy Ben Williams, whose "6 Months Later" went No. 1 [in between Bailey's two hits], were chart buddies the whole time, checking in with each other three or four times a week.

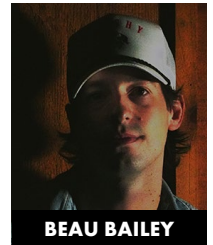
I'm not pursuing an artist deal at this moment. I'm honestly enjoying where I'm at very much, but it's a possibility down the road. I did it for five years right out of college, and really enjoyed the live aspect of it. [Bailey was a member of Universal Music Group signed pop-rock band The Revelries.] I've been writing songs since I was 15, but being in a band taught me how to collaborate with other people and hustle it out, and was a really awesome experience.

It was so much fun writing "Favorite Country Song" at a songwriting camp. I found myself sitting next to Hardy and Ashley Gorley, two of the best to ever do it, and it was off to the races at that point, like everybody was playing ping-pong, throwing out lines to see if they would stick. It was fast and easy because those guys are such geniuses. I think I snuck in the line, "Grease in the skillet goes pop, pop, pop."

"Stay Country Or Die Tryin'," was the first time my childhood best friend [Sony Music Nashville/Disruptor artist] Graham Barham and I had worked with Drew Parker and Sam Ellis. Nothing really stuck for a while, and then we talked about how we all grew up super country and decided to write the most redneck thing we could and see what happens. The hook just kind of fell out from the heavens. God was like, "Here you go."

Graham and I owe a lot to our hometown, Monroe, LA. It definitely shaped the way we write. We decided at 15 or 16 over some baked beans at Podnuh's Bar-B-Q in Monroe that we wanted to do music for real.

John Mayer influenced me as a songwriter. I saw him live for the "Where The Light Is" tour when I was 14 or 15. He and Dave Matthews inspired me to pick up a guitar, and then Ed Sheeran was a big lyric guy for me. I grew up on The Fray, Kings Of Leon, Luke Bryan and Jason Aldean, whose "Fly Over States" was the first riff I ever learned on guitar. Eric Church's *Outsiders Tour* in Bossier City, LA, was the most badass thing I'd ever seen. It made me feel like I could run through a wall. That's the hodgepodge of music I grew up listening to.



BEAU BAILEY

©2026 Country Aircheck™ — All rights reserved. Sign up free at [www.countryaircheck.com](#). Send news to [news@countryaircheck.com](#)

GEORGE BIRGE
featuring Luke Bryan
"RIDE, RIDE, RIDE"

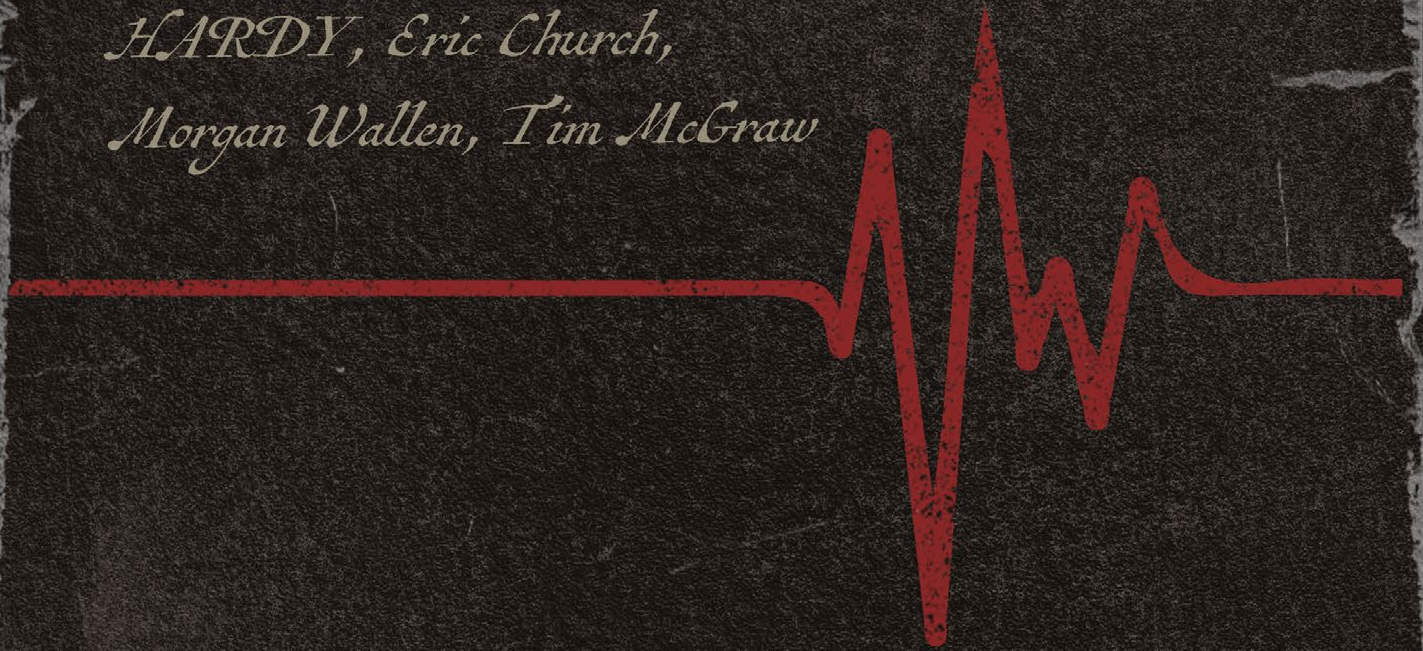
ON OVER 125
STATIONS IN
2 WEEKS



MCA RICH

McArthur

*HARDY, Eric Church,
Morgan Wallen, Tim McGraw*



**A RECORD BREAKING START.
THANK YOU, COUNTRY RADIO!**

BIG LOUD

Need Help?

MENTAL HEALTH

<https://cmamember.com/mentalhealth/>



backline



FINANCIAL RELIEF



ACMLL Diane Holcombe Emergency Relief Fund:

Please email liftinglives@acmcountry.com for the application to apply.



Want To Help?

Fire Aid: <https://fireaidla.org/#donateToday>

ACMLL: <https://www.acmliftinglives.org/donate-step-1>

BFOA: <https://broadcastersfoundation.org/donate/>

Helene Relief: <https://chiefcares.org/>

Borchetta On Big Machine 2.0

(continued from page 1)

studio room last Thursday with all of them, knowing it was going to be the very last time we'd all be "Big Machine," it was tough. They all knew that I fought for them to be together for as long as I could. But the only constant is change ... and the new model that HYBE is building will be very robust. It's just going to be different.

Your new staff and roster is already substantial, and walking away with your Big Machine brand is significant. Did you have to write HYBE a check?

I cannot comment on the economics of the agreement, but I can tell you that HYBE's Chairman Bang, Isaac Lee, Jason Lee and Jenni Pfaf were all incredibly gracious and understanding throughout the entire process. There's always going to be give and take, that's why it's called a negotiation, but I think both sides are very happy with the outcome.

How are you different when working for someone else vs. working entrepreneurially?

I do my best work without any confines. I love working without a net

— as an entrepreneur, a race driver, what have you. My dad was fiercely independent. I'm very driven with what I get passionate about. When I'm an employee, I program myself differently. I program myself to try to be a follower. It's not natural for me to follow, but it is natural for me to continue the great desire to learn. That's the on-off switch for me. As long as I feel I'm learning, I'm good. But within that, I find myself holding back.

How are you different/better/changed as you establish Big Machine 2.0?

Twenty years of experience! We sometimes joke, "some people truly have 20 years' experience ... and some people have one year's experience 20 times." When you look at the wild swings we've had in 20 years, I promise you, it's 20 damn years! Haha. I'm better because I never stop learning and I never stop listening. I have 20 more years of amazing relationships, successes, failures, experiences. Now, I get to shed that skin, take the best of the best and get rid of the rest.

Speed round: Who owns the buildings?

I own the buildings.

Did you get to keep any catalog?

I have the new frontline releases.

Are you funding the new operation, or taking on new partners?

A little of both.

What's going to happen with the CRS lunch?

We're going to knock it out of the park! I'm very proud as to what that lunch showcase has become, which is a "must see." Think of the artists that have broken out at that event: Riley Green, Carly Pearce, Brett Young, Jackson Dean, Midland ... and superstar performances by Garth Brooks & Ronnie Dunn, Rascal Flatts, Tim McGraw, Thomas Rhett, Martina McBride, Lady A and more. Last year we launched Preston Cooper and he received two standing ovations! We have some killer new performances in store. And it's a great time for me to visit with everyone. I truly look forward to it every year.

Lon Helton, lon@countryaircheck.com

Caitlin DeForest, caitlin@countryaircheck.com

Phyllis Stark, phyllis@countryaircheck.com

Chuck Aly, chuck@countryaircheck.com



★★★ Fun Photo? ★★★

Send it to news@countryaircheck.com



RASCAL FLATTS

JONAS BROTHERS

I DARE YOU

MAX SPINS NOW – SUNDAY, FEB. 22



THANK YOU COUNTRY RADIO!



AVAILABLE JOBS

MIDWEST

Morning Co-Host

Federated **WBYY/South Bend, IN** is seeking a morning co-host. Résumé, aircheck and production samples to PD **Jesse Garcia** [here](#).

Operations Manager

Keystone **KICM/Ardmore, OK** is seeking an OM who will work directly with the owners and the sales team, and oversee all aspects of the station's programming. Send résumés [here](#).

Director/Operations

Meredith **KSOM/Atlantic, IA** is looking for a full-time Dir./Operations who can also handle an air shift. Send airchecks, résumés and references to VP/GM William Saluk [here](#).

Brand Manager

Mid-West Family **WRTB/Rockford, IL** is seeking a Brand Mgr. Find the job description [here](#). Apply to sister Rock WXXR Brand Mgr. **Lou Lombardo** [here](#).

Morning Host

Trending Media **KXIA/Marshalltown, IA** is seeking a morning host. The position includes promotion duties, and comes with an opportunity to grow into the PD role. Send resume, references and on-air demo [here](#).

updated this week

Afternoon Host

Midwest **KVOX/Fargo, ND** is seeking a live and local afternoon host with Country, Top 40 or Hot AC experience. Submit résumé, audio samples and "any other material that best displays your talent and skills" to OM **Corey "Zero" Schaffer** [here](#).

Morning Co-Host

SummitMedia EVP/Programming **Randy Chase** is seeking a morning co-host for **KTTS/Springfield, MO**. Email resume and aircheck to Chase [here](#). See the full job posting [here](#).

Production Director

Steel City Media is seeking a full-time Dir./Production for its four-station Kansas City cluster, including **KBEQ** and **KFKF**. See the job posting and apply [here](#).

Weekend/Swing Talent

Hubbard **WIL/St. Louis** is seeking a weekend/swing air personality. Find details and apply [here](#).

Part-Time Air Personality

Midwest **KTWB/Sioux Falls, SD** is seeking a part-timer to voice track nights. Apply [here](#).

NORTHEAST

Morning Co-Host

iHeartMedia **WPOC/Baltimore** is seeking a morning co-host to host with **Michael J.** Apply [here](#).

Morning Host

7 Mountains Media Chief Programming Officer **JC Burton** is seeking a morning host for **WFGY/Altoona, PA**. Send résumé, aircheck and social media examples to him [here](#).

Morning Co-Host

Townsquare **WOKQ/Portsmouth, NH** Brand Mgr. **Garret Doll** is seeking a morning co-host. See the job posting [here](#).

SOUTHEAST

Air Talent and Board Ops

Bristol Broadcasting/Johnson City, TN, which includes Country **WXBQ**, is looking for full-time and part-time air talent and board ops. Résumés and airchecks to PD **Nikki Thomas** [here](#).

Promotions Dir.

Holston Valley Broadcasting/Tri-Cities TN, VA is looking for a Promotions Dir. for AC WTFM, Classic Hits VVEK and Rock WRZK. Résumé and social media samples [here](#).

APD/MD/Afternoon Host

Southern Stone **WKRO/Daytona Beach** has an APD/MD/airstaff opening. Résumés to VP/Programming **Jonathan Wiley** (DJ Tremble) [here](#).

APD

Listen Up Y'all Media/Natchez, MS Group PD **Kidd Conley** is looking for a five-station APD for the cluster that includes **WQNZ**. Résumés, cover letters, production demos and airchecks [here](#).

PD/Air Personality

Consulting firm **RWPC, Inc.** is seeking candidates for a PD/air personality opening at a client station in the Southeast. Send materials to RWPC Pres. **Scott Huskey** [here](#).

VP/Events & Promotions

SummitMedia is seeking a Birmingham-based VP/Events & Promotions to support and lead its promotions and events teams nationally, and assist on-site with major events. Apply [here](#).

Morning Co-host/Promotions Dir.

Hoxeng Trust **WYCT/Pensacola, FL** is seeking a morning co-host and Dir./Promotions. Send materials to OM **Kevin King** [here](#).

Morning Co-Host

Kensington Digital **WECB/Dothan, AL** is seeking a morning co-host. Send airchecks and résumés to Dir./Operations **Kris Lake** [here](#).

Digital Content Manager

SummitMedia is recruiting for a newly created Digital Content Manager position, based in Birmingham. See the job posting and apply [here](#).

PD/Afternoon Host

Saga **KDXY/Jonesboro** is seeking a PD/afternoon host. Send résumé, aircheck, and "anything else that'll make your case" [here](#).

Air Personality/Social Media Coord.

Forever **WOGY/Jackson, TN** is seeking an on-air host/Social Media Coordinator. Apply [here](#).

Air Personality

Bristol **WXBQ/Johnson City, TN** is seeking a full-time night host, and potentially some part-time positions. Send resume, aircheck and "any other details that show us what you're all about" [here](#).

Air Personality

Beasley Top 40 **WXKB/Fort Myers, FL** is seeking a full-time air personality "who can excel in any daypart." The station's programming includes a mix of country artists. Apply [here](#).

Morning Host

Blakeney **WBBN/Laurel-Hattiesburg, MS** OM **Tom Colt** is seeking a morning host. Send résumés and airchecks [here](#).

Morning Show Producer

Cumulus **WKDF/Nashville** has an opening for Morning Show Producer to join the *Jesse James Show* (CAT 6/5). See full post [here](#).

Morning Host

Saga Classic Country **WSIG/Harrisonburg, VA** is seeking a morning host. Email aircheck, résumé and cover letter to Brand Mgr. **Tom Morgan** [here](#).

Multi-Media Marketing Specialist

7 Mountains Media is seeking a Multi-Media Marketing Specialist for its Frankfort, KY cluster, which includes **WKY** & **WKY**. Send résumé and cover letter to MM **Rusty James** [here](#).

Remote Voice Tracker

Stonecom is seeking remote voice trackers for its Cookeville, TN cluster, including Country **WKXD** and Classic Country **WUCH**. Submit résumé, aircheck, commercial sample, writing sample and newscast to VP/Programming **Marcia Lee Lorraine** [here](#).

Senior News Reporter/Anchor

Stonecom is seeking a Sr. News Reporter/Anchor for its Cookeville, TN cluster, including Country **WKXD** and Classic Country **WUCH**. Send samples of your work in PDF form and mp3 (if available) to VP/Programming **Marcia Lee Lorraine** [here](#).

Programming Liaison

Stonecom is seeking an off-air Programming Liaison. for its Cookeville, TN cluster, including Country **WKXD** and Classic Country **WUCH**. Salary is in the low 40s. Apply to VP/Programming **Marcia Lee Lorraine** [here](#).

PD/Morning Host

Saga **WVVR/Clarksville, TN** is seeking a PD/morning host. See the job listing [here](#).

Promotions Manager/Air Personality

SummitMedia/Birmingham is seeking a full-time on-air talent and Mgr./Promotions for the cluster, which includes **WZZK**. Find the job details and apply [here](#).

SOUTHWEST

Morning Host

Stephens Media Group **KKAJ/Ardmore, OK** is seeking a morning host. Résumé, aircheck and references to SVP/Programming **Bob Thornton** [here](#).

Morning Co-Host

Zoellner Media **KWEN/Tulsa** is seeking a morning co-host. Apply [here](#).

Program Director

iHeartMedia **KAJA/San Antonio** has an opening for PD. Requirements include five years of high-level radio experience. See full posting [here](#).

Morning Co-Host

Whitehead **KTTX/Bryan-College Station, TX** is looking for a full-time morning co-host. Send résumé, references and aircheck [here](#).

Evening Host

Cumulus **KSCS/Dallas** is seeking a live and local evening personality to host a new show, *Y'all Night Long!*, aimed at younger country fans. Find details and apply [here](#).

WEST

Air Personality

Owens **KUZZ/Bakersfield** is looking for future part-time and full-time talent. Send résumés and airchecks to PD **Brent Michaels** [here](#). No phone calls.

Morning Co-host/Dir. of Promotions

Stephens Media/Yakima, WA is seeking a Dir./Promotions and **KXDD** morning co-host. Send résumé, aircheck, imaging and social media samples to OM **Justin Henriksen** [here](#).

Morning Co-Host

Townsquare **KUAD/Fort Collins, CO** is seeking a morning co-host. Apply [here](#).

APD/MD/Afternoon Host

Redrock Media **KUTQ/St. George, UT** is seeking an APD/MD and afternoon host. Contact OM **Jasmine Weaver** [here](#).

SVP/Programming

iHeartMedia EVP/Programming **Steve Geofferies** is seeking a SVP/Programming to oversee **KHUD/Tucson** and the cluster's other five stations. Apply [here](#).

Air Personality

Audacy **KSON/San Diego** is seeking an afternoon personality/Imaging Dir. Find the job posting [here](#). The station is also seeking a part-time weekend/swing personality. See that listing [here](#).

OTHER

Junior Agent

Kincaid Entertainment Agency is seeking a full-time Junior Agent to join the team. Applicants should have at least a year of experience in the music industry. Submit resumes [here](#).

Marketing Manager

Activated Events is seeking a remote Mgr./Marketing to develop and execute marketing campaigns for the company's live music festivals. Submit résumé, cover letter and examples of social media/email campaigns with measurable results [here](#).

VP/Sales

Sticks Media owner **Todd Nixon** is seeking a VP/Sales for the company that "includes equity for the right person." Reach him [here](#).

Social Media Manager

Results Global is seeking social media managers in both Nashville and New York. Learn more about those positions [here](#).

Digital & Streaming Coordinator

Red Street Records has an opening for a Coord./Digital & Streaming in Nashville. Apply [here](#).

updated this week

CEO

The **CMA** and independent executive search firm Buffkin Baker have opened applications for the company's next CEO. Questions about the position can be directed [here](#). A full summary of the position, functions and qualifications can be found [here](#).

Program Coordinator

The **Ryan Seacrest Foundation** is seeking a full-time, Nashville-based Program Coord. Pay is \$25-\$27/hour plus benefits. Send résumé and cover letter [here](#).

Manager

ACM Lifting Lives is seeking a Manager. Find details and apply [here](#).

SEEKING JOBS

Click [here](#) to add or update your information

• Scott Aber

Former KGWY/Gillette, WY; KKAJ/Ardmore, OK and KXPX/Las Cruces, NM morning host
sjaber93@gmail.com • 970-712-0249

• Brandon Adams

Former WYCM/Lafayette, IN
PD/midday host
badamsontheair@gmail.com

• Codie Allen

Former WDAF/Kansas City APD/MD/morning co-host
Codie.allen@gmail.com

• Donnie "Hollywood" Andrews

Former WKXD/Cookeville, TN PD/Mornings
hollywoodandrews939@gmail.com

• Phil Becker

Former Alpha Media EVP/Content
PhilBeckerMedia@gmail.com

• Lisa Berg

Former Music Row magazine News Editor and Mediabase airplay researcher
oprrat@comcast.net

• Randy "Bubba" Black

Former KNAH/Salt Lake City morning host
aaronagoodwin@gmail.com

• JT Bosch

Former iHeartMedia/Greensboro SVPP
jt_bosch2002@yahoo.com

• Joey Brooks

Former iHeartMedia SVPP/OM/PD/Air Personality and Dir./Brand Strategy & Programming
TheJoeyShow@gmail.com

• Sarah Marie Burke

Former MCA Mgr./A&R
sarmarburke@gmail.com

• Jake Byron

Former KUPL/Portland air personality
jakebyronmedia@gmail.com

• Mica Cadena

Former WRNS/Greenville, NC
afternoon host
micacadena@gmail.com

• Lori Christian

Former EVP/Marketing UMG/Nashville
lgenceschristian@gmail.com

• Cody Clark

Former KRST/Albuquerque APD/afternoon host
codyclark947@gmail.com

• Margaret Comeaux

Outgoing CMT SVP/Production, Music & Events
Margaret.Comeaux@icloud.com

• Sean Dolan

Former Mercury Promotion Coord.
sdolan2022@gmail.com

• Leah Ducey

Former MCA Sr. Dir./Digital Marketing
Leah.ducey@gmail.com

• Donna Duncan

Former CMT VP/Music & Talent
donna.duncan@me.com

• Cindy Finke

Former MCA Dir./Media Marketing
cmcfinke07@gmail.com

• Bill Fox

Former WISG/Harrisonburg, VA morning host
bfoxro@gmail.com

• Bill Gamble

Former Mid-West Family/South Bend, IN
VP/Content
gamblechicago@yahoo.com

• Sally Green

Former Mercury/West Coast Regional
greenso927@gmail.com

• Michelle Hall

Former MCA Sr. Dir./Marketing & Creative Services
Michelle.rose.hall@gmail.com

• Alek Halverson

Former KAJA/San Antonio PD and KAJA & KASE/
Austin afternoon personality
alekhalverson22@gmail.com

• Katy Huffman

Former MCA Dir./Strategic Marketing
katy.huffman@gmail.com

• Binoj Jacob

Former The Big Time With Whitney Allen Associate Producer
mynamesbinoj@gmail.com
(954)-865-8065

• Sarah Jacobs

Former WFUS/Tampa APD/midday host
OnAirSarah@gmail.com

• Jeff "Shotgun" Jaxon

Former WDAF/Kansas City afternoon host
ShotgunJaxon@gmail.com

• Brittani Johnson

Former The Core Day-To-Day Mgr.
brittiannejohnson@gmail.com

• Greg Johnson

Former Corus Regional
Country Programmer
gjohnsonmedia@gmail.com

• JoJo

Former WFGY/Altoona, PA & WFGE/State College, PA
morning co-host
DM [here](#) or call 724-541-4699

• Chris Jones

Former MCA Mgr./E-Commerce & Retail
gwyn20@gmail.com

• Tommy Jordan

Former WMLL/Manchester, NH
morning co-host
tommyjordan@tommyjordan.net

• Nick Kaper

Former UMG/N Dir./Promotion & Radio Marketing
kapernp@gmail.com

• Caleb Karnoutsos

Former WBZY/Baxley, GA PD
calebkarnoutsos22@gmail.com

• Gary Keffer

Former MCA VP/Strategic Marketing
gdkaffer@gmail.com

• Bethany Kent

Former Audacy Dir./Music Initiatives
Bethany.kent@gmail.com

• Jesse Knutson

Former ACM Dir./Publicity & Media Relations
jessedknutson@gmail.com

• Mike Krinik

Former EMI Nashville/Northeast Regional
mikekrinik@gmail.com

• Andrew "Latty" Latimer

Former WGKX/Memphis morning co-host
aqlatimer@gmail.com
(901) 515-7327

• Christopher "Boomer" Layfield

Former Vox AM/FM/Digital Burlington, VT OM and WCPV PD
boomeradio@gmail.com

• Amber Lee

Former Cumulus/Topeka, KS OM
AmbersHome@gmail.com

• Alyssa Logan

Former MCA Dir./Marketing & Project Mgmt.
alysakatherinelogan@gmail.com

• Hannah Loomis

Former Monument Coord./Marketing & Promotion
hannahgraceloomis@gmail.com

• Bill Lubitz

Former Big Machine Sr. Dir./West Coast Promotion & National Strategy
billlubitz@gmail.com

• Jeremy "Otis" Maher

Former MD/air personality WUBL/Atlanta
jeymaher20@yahoo.com

• Leigh Malleus

Former MCA VP/Media Marketing
LP.Malleus@gmail.com

• Lisa Manning

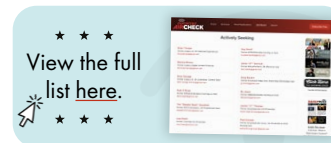
Former WKDF/Nashville midday host
lisamanningvo@aol.com

• Ray Mariner

Former Warner/WEA Mgr./Regional Radio & Streaming
RayMarATL@gmail.com

• Kyle Matthews

Outgoing KBEQ/Kansas City morning co-host
kylmathws@icloud.com



• Chance Maxwell

Former MCA Dir./Streaming Marketing
chancexmaxwell@gmail.com

• Alex Mazza

Former MCA Marketing Project Coord.
agdmazza@gmail.com

• Shane McClintock

Former KSKG/Salina, KS OM
shane.mcclintock809@gmail.com

• Mike McKenzie

Former Summit/Birmingham Mgr./Creative Content & Production
mikemckenzieeradio@yahoo.com

• Justin Michael

The Big Time With Whitney Allen Producer
Justin@RadioJustin.com

• Leigh Morrison

Former UMG/Nashville Mgr./Marketing & Artist Development
leigh.morrison072@gmail.com

• Karen Naff

Former MCA VP/Creative Services
kgnaff@gmail.com

• Alexa Neo

Former WWWF/Nassau-Suffolk midday host
neoalessa1@gmail.com

• Glenn Noblit

Former Monument Dir./Regional Promotion
GPNoblit@icloud.com

• Naomi Onstri

Former CMT Coord./Music & Talent
Naomi.Onstri@gmail.com

• Denise Pagano

Former middays KSBJ/Houston, WXXQ/Rockford, IL
MD/morning host and KILT/Houston part-timer
ddpagano3@yahoo.com

• Chris Palmer

Former Valory Music VP/Promotion & Marketing
palmer1@comcast.net

• Erik Powell

Former Big Machine VP/Promotion & Marketing
erikpowell37@gmail.com

• Amberly Quaintance

Former Beasley/Las Vegas Dir./Special Events & Partnerships
amberlyq@gmail.com

• Christopher Raphael-Reily

Former Capital Promotion Coord.
Chrisraphaelreily@gmail.com

• Sophia Rafalli

Former MCA Coord./Digital Marketing
skrafalli@gmail.com

• Mike "Sandman" Sanders

Former PD/midday host WZZK/Birmingham
sandersonair@gmail.com

• Ryan Sartori

Former WRTB/Rockford, IL morning producer/co-host
and midday host
ryansartori34@gmail.com

• Mara Sidweber

Former Capital/Southwest Regional
msidweber@sbcglobal.net

• Brody Smith

Former Exec. Producer, Katie & Company
brodyradio76@gmail.com

• Jeff St. Pierre

Former WPOC/Baltimore MD/afternoon host
jeffstp@gmail.com

• Chandler Stebbins

Former MCA Mgr./Strategic Marketing
chandler.stebbins@gmail.com

• Taylor Steele

Former MCA Coord./Media Marketing
taylorellensteele@gmail.com

• Val Steele

Former Bicoastal Media Eugene, OR OM/PD/
afternoon host
valsteelradio@gmail.com

• Adri Stuhr

Former air personality WKKW/Morgantown, WV
radioadri143@gmail.com

• Patrick Thomas

Former PickleJar Up All Night host
theradiopatrick@gmail.com

• Sarah Thomas

Former WYCD/Detroit afternoon co-host
SarahThomas.Radio@yahoo.com

• Jake Vega

Former MCA Mgr./Business & Legal Affairs
jbvega.law@gmail.com

• Jonathan West

Former Hubbard KPNW/Seattle part-timer and events host and WTKL/Milwaukee afternoon host
twomanprod@gmail.com

• Tim Winebrenner

The Big Time With Whitney Allen Producer
TimWinebrenner@Live.com

• Matt Wood

Former co-host, Taste of Country Mornings
matthewwood73@gmail.com

• Jess Wright

Former LiveOne/Slacker Radio Country Format Captain
and lead Country host
jesswightradio@gmail.com

• Megan Youngblood

Former Capital/MCA Dir./Regional Promotion
Megayoungblood@gmail.com

THANK YOU COUNTRY RADIO!



86 STATIONS ONLY!

#1 MOST ADDED

NASHVILLE
Harbor
RECORDS &
ENTERTAINMENT

3	1	JASON ALDEAN How Far Does A Goodbye Go (Macon Music/Broken Bow) ✓ (Kurt Allison, John Edwards, Tully Kennedy, John Morgan)	32312	4988	9621	1448	39.084	3.962	158	0
2	2	ELLA LANGLEY /Choosin' Texas (Sawgod/Col. NY/Triple Tigers)	29944	1541	8836	472	38.455	1.628	158	0
4	3	MORGAN WALLEN /20 Cigarettes (Big Loud)	28525	1823	8551	499	38.111	3.01	158	0
5	4	SHABOOZEY & JELLY ROLL /Amen (Empire/Magnolia/Stoney Creek)	27769	1452	8243	469	36.165	1.999	157	0
7	5	T. RHETT f/ J. DAVIS /Ain't A Bad Life (Blue Highway/MCA)	21518	1595	6465	521	25.254	1.1	158	0
8	6	JUSTIN MOORE /Time's Ticking (Blue Highway)	20021	486	5940	208	26.745	0.332	158	0
10	7	MAX MCNOWN /Better Me For You (Col. NY/Magnolia)	18828	1317	5541	352	23.568	1.726	158	0
11	8	LUKE COMBS /Days Like These (Columbia) ✓	18403	2361	5610	702	22.525	2.271	157	1
6	9	HARDY /Favorite Country Song (Big Loud)	17595	-3658	5275	-989	21.748	-4.022	158	0
12	10	DYLAN SCOTT /What He'll Never Have (Curb)	17267	1235	5156	418	21.901	1.895	158	0
14	11	CODY JOHNSON /The Fall (CoJo/Warner/WRN) ✓	16884	2702	5156	863	20.826	1.942	155	0
13	12	RASCAL FLATTS w/ J. BROTHERS /I Dare You (Republic/Nash. Harbor)	15083	460	4473	144	16.428	0.655	158	0
15	13	TY MYERS /Ends Of The Earth (Records Nashville)	14260	539	4179	237	19.31	0.958	151	0
22	14	LUKE COMBS /Sleepless In A Hotel Room (Columbia) ✓	13865	3776	4121	1111	17.29	5.757	157	5
18	15	JORDAN DAVIS /Turn This Truck Around (MCA)	12080	1166	3609	353	14.986	1.45	157	1
17	16	MORGAN WALLEN f/ POST MALONE /I Ain't Coming Back (Big Loud)	11905	28	3711	65	13.093	0.291	119	1
9	17	GEORGE BIRGE /It Won't Be Long (Records Nashville)	11777	-5911	3497	-1873	18.157	-6.588	158	0
19	18	CHRIS JANSON /Me & A Beer (Warner/Harpeth 60)	11653	750	3302	247	13.466	1.327	154	3
23	19	RILEY GREEN /Change My Mind (Nash. Harbor) ✓	11305	2028	3434	681	13.291	2.473	158	0
20	20	M. LAMBERT & C. STAPLETON /A Song To Sing (Republic/Big Loud/Mercury)	11164	277	3231	60	12.57	0.554	155	0
1	21	HUDSON WESTBROOK /House Again (River House/Warner/WAR)	10850	-18686	3172	-5731	18.495	-13.392	157	0
21	22	VINCENT MASON /Wish You Well (Music Soup/MCA)	10442	159	3085	69	12.535	0.642	155	0
24	23	TUCKER WETMORE /Brunette (Back Blocks/Mercury)	10387	1783	3034	543	11.181	1.711	156	1
26	24	MEGAN MORONEY /Beautiful Things (Col. NY/Columbia)	8932	596	2661	182	10.58	1.239	152	2
25	25	OLD DOMINION /Making Good Time (3 Up 3 Down/Columbia)	8641	222	2541	56	10.446	0.401	157	0

©2026 Country Aircheck™ — All rights reserved. Sign up free at www.countryaircheck.com. Send news to news@countryaircheck.com

TOP 10

DYLAN SCOTT

WHAT HE'LL NEVER HAVE

386 MILLION GLOBAL STREAMS

POWER UP!

CURB
RECORDS

A photograph of country music artist Jason Aldean. He is wearing a light-colored straw cowboy hat and a dark denim shirt. He is leaning out of the open window of a vehicle, looking off to the side with a slight smile. The background shows a blurred landscape with trees and hills under a clear sky.

JASON ALDEAN

*HOW FAR DOES A
GOODBYE GO?*

IT GOES ALL THE WAY TO #1!

THANK YOU COUNTRY RADIO!

**BILLBOARD #1
COUNTRY AIRCHECK #1**



LW	TW	Artist/Title (Label)	Total Points +/-	Points Total	Plays +/-	Plays	Audience +/-	Aud	Stations	ADDS
27	26	CHRIS YOUNG/Til The Last One Dies (Black River)	8620	514	2622	137	8.37	0.992	156	0
29	27	COREY KENT f/KOE WETZEL/Rocky Mountain Low (Combustion/RCA)	8423	1276	2534	366	8.62	1.464	156	3
30	28	BAILEY ZIMMERMAN/Chevy Silverado (Atlantic/Warner/WRN)	7801	770	2317	245	9.936	0.875	147	1
31	29	KELSEA BALLERINI/Baggage (Black River)	7604	591	2340	145	6.999	0.727	153	0
28	30	PRESTON COOPER/Weak (Blue Highway)	7547	-325	2302	-59	8.532	-0.243	151	0
32	31	LOCASH/Wrong Hearts (Galaxy)	6735	36	1960	19	7.798	-0.099	148	0
33	32	GAVIN ADCOCK/Never Call Again (Warner/WRN)	6321	203	1806	29	7.207	0.341	145	1
34	33	NATE SMITH f/TYLER HUBBARD/After Midnight (RCA)	5243	101	1613	56	6.415	0.507	122	4
35	34	JOSH ROSS/Hate How You Look (Core/Mercury)	5141	258	1554	73	5.227	0.335	137	3
36	35	ZACH TOP/South Of Sanity (Leo33)	5067	297	1483	85	6.161	0.31	115	3
37	36	JOHN MORGAN/Kid Myself (Night Train/Broken Bow)	4968	247	1549	72	4.361	-0.262	123	0
AIRBORNE HARDY f/E. CHURCH, M. WALLEN & T. MCGRAW/McArthur (Big Loud)			4739	1899	1407	535	4.655	1.272	112	36
38	38	LAUREN ALAINA f/CHASE MATTHEW/All My Exes (Big Loud)	4644	158	1364	22	3.266	-0.013	130	7
39	39	CAROLINE JONES/No Tellin' (Nash. Harbor)	4051	212	1269	76	1.276	0.077	127	1
16	40	MEGHAN PATRICK/Golden Child (Riser House)	4021	-8851	1164	-2547	4.313	-9.736	157	0
40	41	KELSEY HART/Fireworks (Curb)	3974	273	1229	71	1.822	0.134	115	4
42	42	ALEXANDRA KAY/Straight For The Heart (Wheelhouse)	3908	347	1145	73	2.966	0.936	119	2
43	43	SHANE PROFITT/Long Live Country (Triple Tigers)	3830	276	1230	71	2.21	0.101	115	1
45	44	JON PARDI/Boots Off (MCA)	3708	342	1050	86	4.027	1.377	110	8
50	45	GEORGE BIRGE f/LUKE BRYAN/Ride, Ride, Ride (Records Nashville/MCA)	3612	851	1004	161	2.701	-0.45	123	27
41	46	DUSTIN LYNCH/Easy To Love (Broken Bow)	3541	-103	1131	-13	1.758	-0.085	128	0
44	47	CHASE MCDANIEL/Burned Down Heaven (Blue Highway)	3488	-51	1051	-18	1.806	0.008	120	0
46	48	CARLY PEARCE/Dream Come True (Blue Highway)	3285	-44	996	-1	1.519	-0.032	127	0
47	49	ASHLEY COOKE/The Hell You Are (Back Blocks/Big Loud)	3171	110	957	44	2.202	0.157	103	1
49	50	LEE BRICE/Killed The Man (Curb)	2878	89	888	24	1.723	0.341	106	7

©2026 Country Aircheck™ — All rights reserved. Sign up free at www.countryaircheck.com. Send news to news@countryaircheck.com



Give monthly.
Get your shirt!
musicgives.org



Country Aircheck Add Leaders

	Adds
THE BAND PERRY /Psychological (Nash. Harbor)	82
PARKER MCCOLLUM /Killin' Me (MCA)	56
HARDY, E. CHURCH, M. WALLEN & T. MCGRAW /McArthur (Big Loud)	36
G. BIRGE f/L. BRYAN /Ride, Ride, Ride (Records Nashville/MCA)	27
FLATLAND CAVALRY /Never Comin' Back (ICLG/Lost Highway)	10
CHASE MATTHEW /Holdin' It Down (Warner/WAR)	8
ELLA LANGLEY /Be Her (Sawgod/Col. NY/Triple Tigers)	8
JON PARDI /Boots Off (MCA)	8
B. LAKE & C. JOHNSON /When A Cowboy Prays (PLG/SMN)	7
L. ALAINA f/C. MATTHEW /All My Exes (Big Loud)	7
LEE BRICE /Killed The Man (Curb)	7

Country Aircheck Top Point Gainers

J. ALDEAN /How Far Does A Goodbye Go (Macon Music/Broken Bow)	4988 ✓
LUKE COMBS /Sleepless In A Hotel Room (Columbia)	3776 ✓
CODY JOHNSON /The Fall (CoJo/Warner/WRN)	2702 ✓
LUKE COMBS /Days Like These (Columbia)	2361 ✓
RILEY GREEN /Change My Mind (Nash. Harbor)	2028 ✓
HARDY f/E. CHURCH, M. WALLEN & T. MCGRAW /McArthur (Big Loud)	1899
MORGAN WALLEN /20 Cigarettes (Big Loud)	1823
TUCKER WETMORE /Brunette (Back Blocks/Mercury)	1783
T. RHETT f/J. DAVIS /Ain't A Bad Life (Blue Highway/MCA)	1595
ELLA LANGLEY /Choosin' Texas (Sawgod/Col. NY/Triple Tigers)	1541

Country Aircheck Top Spin Gainers

J. ALDEAN /How Far Does A Goodbye Go (Macon Music/Broken Bow)	1448
LUKE COMBS /Sleepless In A Hotel Room (Columbia)	1111
CODY JOHNSON /The Fall (CoJo/Warner/WRN)	863
LUKE COMBS /Days Like These (Columbia)	702
RILEY GREEN /Change My Mind (Nash. Harbor)	681
TUCKER WETMORE /Brunette (Back Blocks/Mercury)	543
HARDY f/E. CHURCH, M. WALLEN & T. MCGRAW /McArthur (Big Loud)	535
T. RHETT f/J. DAVIS /Ain't A Bad Life (Blue Highway/MCA)	521
MORGAN WALLEN /20 Cigarettes (Big Loud)	499
ELLA LANGLEY /Choosin' Texas (Sawgod/Col. NY/Triple Tigers)	472

Activator Top Point Gainers

HARDY f/E. CHURCH, M. WALLEN & T. MCGRAW /McArthur (Big Loud)	860 ✓
TUCKER WETMORE /Brunette (Back Blocks/Mercury)	777 ✓
LUKE COMBS /Sleepless In A Hotel Room (Columbia)	682 ✓
JORDAN DAVIS /Turn This Truck Around (MCA)	450 ✓
CODY JOHNSON /The Fall (CoJo/Warner/WRN)	401 ✓
T. RHETT f/J. DAVIS /Ain't A Bad Life (Blue Highway/MCA)	370
M. WALLEN f/POST MALONE /I Ain't Coming Back (Big Loud)	358
MORGAN WALLEN /20 Cigarettes (Big Loud)	351
MAX MCNOWN /Better Me For You (Col. NY/Magnolia)	350
RILEY GREEN /Change My Mind (Nash. Harbor)	307

Activator Top Spin Gainers

TUCKER WETMORE /Brunette (Back Blocks/Mercury)	389
HARDY f/E. CHURCH, M. WALLEN & T. MCGRAW /McArthur (Big Loud)	375
LUKE COMBS /Sleepless In A Hotel Room (Columbia)	356
JORDAN DAVIS /Turn This Truck Around (MCA)	223
T. RHETT f/J. DAVIS /Ain't A Bad Life (Blue Highway/MCA)	212
CODY JOHNSON /The Fall (CoJo/Warner/WRN)	199
RILEY GREEN /Change My Mind (Nash. Harbor)	175
MORGAN WALLEN /20 Cigarettes (Big Loud)	169
MAX MCNOWN /Better Me For You (Col. NY/Magnolia)	163
M. WALLEN f/POST MALONE /I Ain't Coming Back (Big Loud)	155

Country Aircheck Top Recurrents

	Points
CHASE MATTHEW /Darlin' (Warner/WAR)	14498
THOMAS RHETT /After All The Bars Are Closed (Valory)	14093
PARMALEE /Cowgirl (Stoney Creek)	12365
MORGAN WALLEN /I Got Better (Big Loud)	11124
RUSSELL DICKERSON /Happen To Me (Triple Tigers)	9902
SHABOOZEY /Good News (Empire/Magnolia)	9238
MORGAN WALLEN /Just In Case (Big Loud)	8789
JELLY ROLL /Heart Of Stone (BMG/Republic/Stoney Creek)	8247
KOE WETZEL & JESSIE MURPH /High Road (Col. NY/RCA)	7576
MORGAN WALLEN /I'm The Problem (Big Loud)	7352

©2026 Country Aircheck™ All rights reserved. Sign up at countryaircheck.com • Send news to news@countryaircheck.com ✓=Top 5 Point Gainers

Help Us HEAL the Music

Help us keep the music industry healthy,
artists touring, and the music playing!

Music Health Alliance provides FREE advocacy, support
and access to life-saving healthcare and financial resources to
music professionals and their families nationwide.

Join us in our mission to Heal the Music!

DONATE TODAY!



615.200.6896

www.musichealthalliance.com
info@musichealthalliance.com

AIRPLAY BY STATION OWNER



iHeart (51)



Audacy (17)



Cumulus (17)



Summit (5)

OVERALL

LW	TW	ARTIST/Title	Rank	Plays	Avg/ Sta	Rank	Plays	Avg/ Sta	Rank	Plays	Avg/ Sta	Rank	Plays	Avg/ Sta
3	1	JASON ALDEAN/How Far Does A Goodbye Go	1	3,189	62.5	2	983	57.8	1	1,016	59.8	1	356	71.2
2	2	ELLA LANGLEY/Choosin' Texas	4	2,928	57.4	1	996	58.6	2	872	51.3	13	223	44.6
4	3	MORGAN WALLEN/20 Cigarettes	3	3,120	61.2	5	717	42.2	3	856	50.4	2	339	67.8
5	4	SHABOOZEY & JELLY ROLL/Amen	2	3,175	62.3	4	728	42.8	7	603	35.5	3	328	65.6
7	5	THOMAS RHETT f/ JORDAN DAVIS/Ain't A Bad Life	6	2,215	43.4	6	670	39.4	5	672	39.5	42	84	16.8
8	6	JUSTIN MOORE/Time's Ticking	7	2,098	41.1	9	537	31.6	4	738	43.4	18	183	36.6
10	7	MAX MCNOWN/Better Me For You	19	1,305	25.6	3	740	43.5	8	561	33.0	6	318	63.6
11	8	LUKE COMBS/Days Like These	11	1,938	38.0	11	445	26.2	10	533	31.4	4	328	65.6
6	9	HARDY/Favorite Country Song	5	2,304	45.2	8	575	33.8	26	345	20.3	74	22	4.4
12	10	DYLAN SCOTT/What He'll Never Have	12	1,903	37.3	14	437	25.7	15	472	27.8	15	197	39.4
14	11	CODY JOHNSON/The Fall	15	1,701	33.4	16	410	24.1	12	522	30.7	14	201	40.2
13	12	RASCAL FLATTS w/ JONAS BROTHERS/I Dare You	14	1,820	35.7	15	424	24.9	16	449	26.4	47	52	10.4
15	13	TY MYERS/Ends Of The Earth	28	814	16.0	12	442	26.0	6	607	35.7	128	2	0.4
22	14	LUKE COMBS/Sleepless In A Hotel Room	20	1,293	25.4	7	599	35.2	9	538	31.6	27	145	29.0
18	15	JORDAN DAVIS/Turn This Truck Around	23	996	19.5	19	380	22.4	20	403	23.7	10	248	49.6
17	16	M. WALLEN f/ P. MALONE/I Ain't Coming Back	8	2,087	40.9	18	402	23.6	105	65	3.8	128	2	0.4
9	17	GEORGE BIRGE/It Won't Be Long	16	1,689	33.1	83	114	6.7	49	216	12.7	117	4	0.8
19	18	CHRIS JANSON/Me & A Beer	25	970	19.0	23	342	20.1	21	400	23.5	29	144	28.8
23	19	RILEY GREEN/Change My Mind	26	919	18.0	20	378	22.2	18	433	25.5	7	266	53.2
20	20	M. LAMBERT & C. STAPLETON/A Song To Sing	22	1,063	20.8	24	312	18.4	53	188	11.1	34	126	25.2

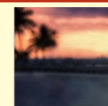
MARKET AIRPLAY PROFILE - INDIANAPOLIS



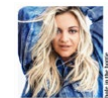
Rank		WFMS	WLHK	Total
1	JASON ALDEAN/How Far Does A Goodbye Go	66	67	133
2	MORGAN WALLEN/20 Cigarettes	62	66	128
3	SHABOOZEY & JELLY ROLL/Amen	39	67	106
4	ELLA LANGLEY/Choosin' Texas	39	66	105
5	LUKE COMBS/Days Like These	31	67	98
6	JUSTIN MOORE/Time's Ticking	51	37	88
7	DYLAN SCOTT/What He'll Never Have	37	46	83
8	CODY JOHNSON/The Fall	40	40	80
9t	HARDY/Favorite Country Song	31	47	78
9t	TY MYERS/Ends Of The Earth	28	50	78
11	GEORGE BIRGE/It Won't Be Long	37	39	76
12	RASCAL FLATTS w/JONAS BROTHERS/I Dare You	35	37	72
13	MAX MCNOWN/Better Me For You	32	36	68
14	THOMAS RHETT f/JORDAN DAVIS/Ain't A Bad Life	37	24	61
15	BAILEY ZIMMERMAN/Chevy Silverado	23	37	60
16	CHASE MATTHEW/Darlin'	43	15	58
17t	LOCASH/Wrong Hearts	21	33	54
17t	PRESTON COOPER/Weak	17	37	54
19	HUDSON WESTBROOK/House Again	16	32	48
20	MEGAN MORONEY/Beautiful Things	26	21	47

FLASHBACK No. 1s

1 YEAR AGO
MORGAN WALLEN
Love Somebody
(3rd week)



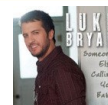
5 YEARS AGO
KELSEA BALLERINI
Hole In The Bottle



10 YEARS AGO
GRANGER SMITH
Backroad Song



15 YEARS AGO
LUKE BRYAN
Someone Else Calling
You Baby



20 YEARS AGO
CARRIE UNDERWOOD
Jesus, Take The Wheel
(4th week)



25 YEARS AGO
KEITH URBAN
But For The Grace
Of God



COUNTRY AIRCHECK ACTIVITY

GEORGE BIRGE f/ LUKE BRYAN/Ride, Ride, Ride (Records Nashville/MCA)

Moves 50-45*

3612 Points, 1004 Spins

27 adds, including: **KATC***, **KNCI**, **KSCS***, **KZSN**, **WGKX***, **WIVK***, **WMAD**, **WRNX**, **WTHH**, **WXTU****DUSTIN LYNCH**/Easy To Love (Broken Bow)

Moves 41-46

3541 Points, 1131 Spins; No adds

CHASE MCDANIEL/Burned Down Heaven (Blue Highway)

Moves 44-47

3488 Points, 1051 Spins; No adds

CARLY PEARCE/Dream Come True (Blue Highway)

Moves 46-48

3285 Points, 996 Spins; No adds

ASHLEY COOKE/The Hell You Are (Back Blocks/Big Loud)

Moves 47-49*

3171 Points, 957 Spins

1 add: **WGGY****LEE BRICE**/Killed The Man (Curb)

Moves 49-50*

2878 Points, 888 Spins

7 adds: **KAWO**, **KMDL**, **KUAD**, **W1HC***, **WITL**, **WOKQ**, **WPAW****CHASE MATTHEW**/Holdin' It Down (Warner/WAR)

2727 Points, 851 Spins

8 adds: **KFDI***, **KJKE**, **KSD**, **KTTS***, **WCYQ***, **WGGY**, **WKHK***, **WZZK*****RUSSELL DICKERSON**/Worth Your Wild (Triple Tigers)

2699 Points, 875 Spins; No adds

JACKSON DEAN/Make A Liar (Blue Highway)

2697 Points, 822 Spins

3 adds: **KUAD**, **W1HC***, **WKSJ****GREYLAN JAMES**/Water At A Wedding (Nash. Harbor)

2631 Points, 846 Spins

2 adds: **KBEQ**, **KMNB****ATLUS**/Devil Ain't Done (Stoney Creek)

2587 Points, 749 Spins; No adds

©2026 Country Aircheck™ — All rights reserved. Sign up free at www.countryaircheck.com. Send news to news@countryaircheck.com

ADD DATES

Send yours to adds@countryaircheck.com

FEBRUARY 23

BEN GALLAHER/I'll Take You (Stone Country)**ASHLEY MCBRYDE**/What If We Don't (Warner Records Nashville)**BRYAN MARTIN**/Tug O' War (Average Joes)

MARCH 2

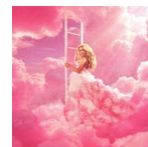
None listed

MARCH 9

None Listed

CHECK OUT

FEB. 20

Megan Moroney *Cloud 9* (SMN/Columbia) Moroney co-wrote all 15 tracks on her third studio LP, produced alongside Kristian Bush and Luke Laird. The set includes lead single "6 Months Later" and collaborations with Ed Sheeran ("I Only Miss You") and Kacey Musgraves ("Bells & Whistles").**Filmore** *Atypical* (Mr. 305 Records) Filmore, the first country artist signed to Pitbull's Mr. 305 Records, co-wrote all 21 tracks and co-produced 16 songs on his fourth studio album.HELP US
DELIVERTHE HEALING POWER OF
MUSIC TO PATIENTSwww.musiciansoncall.org

				Points	+/- Points	Plays	+/- Plays	Stations	ADDS
1	1	ELLA LANGLEY	Choosin' Texas (Sawgod/Col. NY/Triple Tigers)	6499	217	3194	105	67	0
2	2	JASON ALDEAN	/How Far Does A Goodbye Go (Macon Music/Broken Bow)	6416	259	3187	137	66	0
3	3	MORGAN WALLEN	/20 Cigarettes (Big Loud)	5803	351	2884	169	67	0
4	4	SHABOOZEY & JELLY ROLL	/Amen (Empire/Magnolia/Stoney Creek)	5497	129	2762	73	67	0
6	5	THOMAS RHETT f/ JORDAN DAVIS	/Ain't A Bad Life (Blue Highway/MCA)	5320	370	2652	212	67	0
9	6	JUSTIN MOORE	/Time's Ticking (Blue Highway)	4633	153	2289	86	65	0
10	7	CODY JOHNSON	/The Fall (CoJo/Warner/WRN) ✓	4468	401	2219	199	67	0
11	8	MAX MCNOWN	/Better Me For You (Col. NY/Magnolia)	4321	350	2143	163	66	1
7	9	HARDY	/Favorite Country Song (Big Loud)	4275	-607	2113	-368	66	0
12	10	LUKE COMBS	/Days Like These (Columbia)	4172	252	2107	122	65	0
13	11	DYLAN SCOTT	/What He'll Never Have (Curb)	3775	151	1894	75	67	0
8	12	GEORGE BIRGE	/It Won't Be Long (Records Nashville)	3371	-1308	1707	-667	63	0
14	13	TY MYERS	/Ends Of The Earth (Records Nashville)	3305	16	1661	19	65	1
19	14	LUKE COMBS	/Sleepless In A Hotel Room (Columbia) ✓	3278	682	1572	356	63	9
17	15	JORDAN DAVIS	/Turn This Truck Around (MCA) ✓	3225	450	1575	223	66	1
15	16	RASCAL FLATTS w/ JONAS BROTHERS	/I Dare You (Republic/Nash. Harbor)	3170	31	1638	24	62	0
18	17	MORGAN WALLEN f/ POST MALONE	/I Ain't Coming Back (Big Loud)	2960	358	1466	155	64	0
5	18	HUDSON WESTBROOK	/House Again (River House/Warner/WAR)	2710	-2419	1411	-1112	66	0
16	19	M. LAMBERT & C. STAPLETON	/A Song To Sing (Republic/Big Loud/Mercury)	2698	-86	1356	-40	63	0
20	20	CHRIS JANSON	/Me & A Beer (Warner/Harpeth 60)	2620	80	1327	59	64	0
23	21	RILEY GREEN	/Change My Mind (Nash. Harbor)	2351	307	1176	175	63	5
21	22	VINCENT MASON	/Wish You Well (Music Soup/MCA)	2323	34	1174	23	63	0
32	23	TUCKER WETMORE	/Brunette (Back Blocks/Mercury) ✓	2121	777	1060	389	63	15
33	24	HARDY f/ E. CHURCH, M. WALLEN & T. MCGRAW	/McArthur (Big Loud) ✓	2047	860	953	375	49	12
25	25	MEGAN MORONEY	/Beautiful Things (Col. NY/Columbia)	2026	142	987	69	61	1
26	26	BAILEY ZIMMERMAN	/Chevy Silverado (Atlantic/Warner/WRN)	2021	155	931	78	59	2
27	27	OLD DOMINION	/Making Good Time (3 Up 3 Down/Columbia)	2014	164	1011	91	62	1
24	28	CHRIS YOUNG	/Til The Last One Dies (Black River)	1959	36	964	21	61	2
28	29	COREY KENT f/ KOE WETZEL	/Rocky Mountain Low (Combustion/RCA)	1879	163	878	80	62	2
30	30	KELSEA BALLERINI	/Baggage (Black River)	1640	125	805	59	59	0

©2026 Country Aircheck™ — All rights reserved. Sign up free at www.countryaircheck.com. Send news to news@countryaircheck.com



FAM

Are you a
Parent or Caregiver
working in the music industry?

Or maybe you are looking to start a family or have questions about benefits and care? We want to tell you about an awesome new group founded by industry execs in Nashville- the Family Alliance in Music (aka FAM). Connect with us and sign up for our newsletter to learn more.



FamilyAllianceinMusic.org



[@FamilyAllianceinMusic](https://www.instagram.com/FamilyAllianceinMusic)

LW	TW	Artist/Title (Label)	Points	+/-	Points	Plays	+/-	Plays	Stations	Adds
29	31	PRESTON COOPER /Weak (Blue Highway)	1600	-91	779	-48	59	0		
31	32	ZACH TOP /South Of Sanity (Leo33)	1540	154	713	88	51	4		
22	33	MEGHAN PATRICK /Golden Child (Riser House)	1327	-912	712	-441	59	0		
34	34	KELSEY HART /Fireworks (Curb)	1239	68	593	23	51	5		
35	35	LOCASH /Wrong Hearts (Galaxy)	1134	42	550	13	59	4		
37	36	NATE SMITH f/ TYLER HUBBARD /After Midnight (RCA)	1072	35	526	15	46	3		
36	37	GAVIN ADCOCK /Never Call Again (Warner/WRN)	1049	-17	481	-12	49	0		
38	38	LEE BRICE /Killed The Man (Curb)	1035	167	501	61	40	0		
40	39	JOSH ROSS /Hate How You Look (Core/Mercury)	739	4	354	4	46	1		
41	40	CAROLINE JONES /No Tellin' (Nash. Harbor)	732	32	344	17	46	1		
39	41	LAUREN ALAINA f/ CHASE MATTHEW /All My Exes (Big Loud)	698	-64	330	-15	46	3		
42	42	AARON WATSON /Pontiac (So Tell Me Momma) (Adub/New Revolution)	648	31	298	4	21	0		
46	43	JOHN MORGAN /Kid Myself (Night Train/Broken Bow)	634	82	286	41	42	0		
56	44	GEORGE BIRGE f/ LUKE BRYAN /Ride, Ride, Ride (Records Nashville/MCA)	618	305	291	143	31	17		
47	45	JON PARDI /Boots Off (MCA)	616	67	294	33	29	2		
45	46	STEPHEN WILSON JR. /Gary (Big Loud)	601	33	264	16	27	0		
48	47	SHANE PROFITT /Long Live Country (Triple Tigers)	592	134	271	56	30	0		
43	48	CARLY PEARCE /Dream Come True (Blue Highway)	564	-25	241	-15	30	0		
44	49	DUSTIN LYNCH /Easy To Love (Broken Bow)	556	-28	265	-16	35	0		
49	50	ASHLEY COOKE /The Hell You Are (Back Blocks/Big Loud)	445	-10	220	-1	36	1		
Debut	51	ELLA LANGLEY /Dandelion (Sawgod/Col. NY/Triple Tigers)	438	253	156	99	12	3		
	50	RUSSELL DICKERSON /Worth Your Wild (Triple Tigers)	424	24	204	10	25	0		
	51	SKIP EWING /I Want It All (Write!)	376	12	184	4	13	0		
	52	ALEX MILLER /Secondhand Smoke (Billy Jam)	364	1	175	2	14	0		
	53	TURNPIKE TROUBADOURS /Heaven Passing Through (Bossier City/Thirty Tigers/Akando)	343	10	136	-1	14	0		
	54	JACKSON DEAN /Make A Liar (Blue Highway)	338	10	128	-4	12	0		
	55	CHASE MATTHEW /Holdin' It Down (Warner/WAR)	318	-4	151	2	22	1		
Debut	58	FLATLAND CAVALRY /Never Comin' Back (ICLG/Lost Highway)	307	83	123	25	15	3		
	57	ALEXANDRA KAY /Straight For The Heart (Wheelhouse)	297	-6	150	-2	24	0		
	58	60 SOUL CIRCUS COWBOYS f/ ANDY GRIGGS /Life's Highway (Kismet Nashville)	284	-6	133	-3	11	0		

©2026 Country Aircheck™ — All rights reserved. Sign up free at www.countryaircheck.com. Send news to news@countryaircheck.com

HELP YOUR BROADCAST COLLEAGUES IN NEED

Broadcasters Foundation of America reaches across the country to provide a safety net for radio & television professionals who find themselves in financial need due to a critical illness, accident, or natural disaster.

LEARN MORE



www.broadcastersfoundation.org

