

# COUNTRY AIRCHECK

ISSUE 16

MUSIC EDITION

DECEMBER 4, 2006



## Toby, Keith & MG Up For Bid

There are just over two more days for you and your listeners to bid on the items up for grabs at the CRB Country DJ & Radio Hall of Fame Auction. It's being conducted by CMT, so send your listeners to [www.cmtauctions.com](http://www.cmtauctions.com).

The highest items right now are meet and greets with **Toby Keith** and **Keith Urban**. There are four packages to see Toby during CRS-38 at the Music City Jam 2007. Keith's item includes two tickets to the concert of your choice and the backstage hoo-hah. A real bargain at \$720 right now is two ducats to Montgomery Gentry's New Year's Eve bash in Lexington, including airfare, two nights hotel and meeting Eddie and Troy.

There are lots of one-of-a-kind items on the block, including a signed George Strait cowboy hat, autographed Harley helmets, a Faith Hill signed No. 1 plaque for "Mississippi Girl" and enough signed guitars to start your own hard Rock Café.

Unless you're bidding on these items to stock the ol' promotion closet, let's get the word out and drive these prices through the roof!

## Vince Valiant Again This Year

So, what do think the most-heard Country Gold song was last week, according to Mediabase 24/7? **Tim McGraw's** "Something Like That," **Toby**

## COUNTRY AIRCHECK & MEDIABASE YEAR END REPORTING SCHEDULE & DATES

It's hard to believe yet another year has gone by. But, if you're feeling like we do about now, it's time for a little break from a year that has brought so much change to every facet of our industry and affected so many thousands of lives.

Here are some dates to keep in mind, along with the reporting schedule for the rest of this year and into 2007.

>**Dec. 13:** **Country Aircheck's** inaugural publication will be hitting your mailbox and the streets of Music City next week. We'll wrap-up the Top 6 stories of 2006 and look ahead at the news of '07. We'll also feature the Top 100 of 2006, all the singles that hit the Top 15 during the year, and profile the Label of the Year. Plus, we'll provide a sneak peek at the Country singles and CDs slated for Q1 of 2007.

>**Dec. 18:** The last reporting day of the year. There will be no reports on Monday December 25 or January 1, 2007. The last **CA Music Edition** will arrive Monday night, Dec. 18.

>**Dec. 21:** The last **Country Aircheck Today** of 2006 will arrive in your email box.

>**Jan. 3, 2007:** We'll crank up **CAT** for 2007.

>**Jan. 8, 2007:** The first report day of 2007. Adds from Mediabase-monitored stations will be taken at [www.airplayaddboard.com](http://www.airplayaddboard.com) beginning Thursday morning Jan. 4 until Monday Jan. 8 at 3pm ET-Noon PT. That evening, you'll receive the first **CA Music Edition** of the New Year.

©2006 Country Aircheck™ — All rights reserved. To subscribe visit [www.countryaircheck.com](http://www.countryaircheck.com)



**JACK INGRAM**

**MOST ADDED 3 WEEKS RUNNING!!!**

*Lips of an Angel*

CA/MB: 44 - 36 +700 points  
**BIGGEST JUMP OF THE WEEK!**

RR/BB: 41\*-34\* +1.3 MILLION IMPRESSIONS  
**BIGGEST JUMP OF THE WEEK! (tied with Urban)**



**PROVEN HIT. PROVEN HITMAKER.**

**NEW TODAY:** WKHX, WGNE, WRNS, WBCT, KMLE, KRTY, WKIS, WMIL, WWYZ, WYNK, WGKX, KXKC, KRYS, KTOM, KCCY, KHKI, WKSJ, KIXZ, KIZN, KKNG, WITL, WCAT, WFRG, WHWK, WJLS, WTCR, WXTA, WRSF, WTCM, WTHI, WOKK, WXFL, KIXQ, KZKX, KAFF, KFTX, KBUL, KUAD, KPLM, KSNI, KXDD, WACO, WRSF

*Taylor Swift*

**"TIM MCGRAW"**

CA/MB: 10 +421 POINTS RR/BB: 10\* +1.4 MILLION IMPRESSIONS

**CONVERT TO HEAVY NOW!**



**Keith's** "I Wanna Talk About Me" or "Should've Been A Cowboy?" Or maybe you think it's **Alan Jackson's** "It's Five O' Clock Somewhere." Normally, you'd be right. But three weeks before Christmas, the No. 1 Gold song is **Vince Vance & The Valiants** and "All I Want For Christmas."

Vance leads the 12 holiday songs in the week's Top 150 Gold songs from Mediabase. They are:

1. **VINCE VANCE & THE VALIANTS/**  
All I Want For Christmas...
2. **BRENDA LEE/**  
Rockin' Around The Christmas Tree
3. **CLINT BLACK/'Til Santa's Gone**
4. **JEFF FOXWORTHY/**  
12 Redneck Days Of Christmas
5. **BOBBY HELMS/Jingle Bell Rock**
6. **ALAN JACKSON/A Holly Jolly Christmas**
7. **GEORGE STRAIT/Christmas Cookies**
8. **SKIP EWING/Christmas Carol**
9. **ALABAMA/Christmas In Dixie**
10. **ALAN JACKSON/Let It Be Christmas**
11. **FAITH HILL/Where Are You Christmas**
12. **JOE DIFFIE/Leroy The Redneck Reindeer**

While no recent Christmas releases have received enough airplay to break into the Top 50 as yet, a number are getting significant airplay. The most-played new cuts include songs from **Brad Paisley's** first-ever Christmas album and from **George Strait's** new "Fresh Cut Christmas" CD that is only available at Hallmark Stores.

The Top 10 of recent holiday releases:

1. **DEAN MARTIN & MARTINA McBRIDE/**  
Baby It's Cold Outside
2. **JOE NICHOLS/**  
Let It Snow, Let It Snow, Let It Snow
3. **WYNONNA/Santa Claus Is Coming To Town**
4. **BRAD PAISLEY/Born On Christmas**

## DATE CHECK

**February 27 - Country Radio & DJ Hall of Fame Dinner.**

[www.crb.org](http://www.crb.org)

**February 28 to March 2 - CRS-38.**

[www.crb.org](http://www.crb.org)

**May 15 - 42nd Annual ACM Awards.**

[www.acmcountry.com](http://www.acmcountry.com)

5. **BRAD PAISLEY/Santa Looked A Lot Like Daddy**
6. **BRAD PAISLEY/Winter Wonderland**
7. **TIM McGRAW/Dear Santa**
8. **GEORGE STRAIT/Jingle Bells (Hallmark)**
9. **GEORGE STRAIT/**  
We Wish You A Merry Christmas (Hallmark)
10. **BRAD PAISLEY/Penguin, James Penguin**

## FCC Hears Nashville Next Week

The FCC's Nashville field hearing on media ownership, scheduled for next Monday (12/11), will include two panels and a period of public comment. The first panel will focus on Nashville's recorded music industry, and the second will address the local broadcast market and issues affecting broadcasters.

Panelists for the first session include recent Country Music Hall of Fame inductee **Harold Bradley**, Songwriter's Guild President **Rick Carnes**, Vanderbilt professor **Luke M. Froeb**, songwriter **Dobie Gray**, **George Jones**, **Naomi Judd**, WFSK (Fisk University)/Nashville GM **Sharon Kay**, Future of Music Coalition's **Jenny Toomey**, **Porter Wagoner**, Cromwell's **Bud Walters**, songwriter **Craig Wiseman** and Vanderbilt law professor **Christopher S. Yoo**.

The second panel features GCA Publishing's **Gary W. Cunningham**, Christian Television Network's **Bob D'Andrea**, WSMV-TV/Nashville's **Elden Hale**, WVOL-AM/Nashville's **John**

©2006 Country Aircheck™ — All rights reserved. Send news to [news@countryaircheck.com](mailto:news@countryaircheck.com)

# Killer Research!!!!

## Tim McGraw "My Little Girl"

**Top 3 Ranking Spins – Local Callout Stations:**  
**WUSN, WAMZ, KNCI, KFRG, KNIX,**  
**WDSY, KWJJ, WYCD, WKLB, KAJA,**  
**KBEQ, WSOC, WKIS, KSON, WTQR, KRTY**

**Callout America**

**#1 with Females!**  
**#1 Overall!**

**MB: 5 to 4 +106 spins**  
**RR: 5 to 4 +288 +1.6 mil aud**





**Heidelberg**, journalist **Alex Jones**, Consumer Union's **Gene Kimmelman**, the *Tennessean*'s **Ellen Leifeld**, Young Broadcasting's **Deborah A. McDermott**, Big Idea's **Terry Pefanis**, journalist **Wendell Rawls**, News Channel 5's **Debbie Turner**, Radio Free Nashville's **Ginny Welsch**, and radio and record vet **James Wolfe**.

The panel is set for 1pm at Belmont's Massey Performing Arts Center. Details at [www.fcc.gov](http://www.fcc.gov).

## Radio News

**Personalities:** Radio vet **Kevin Blanford** has been hired for mornings at KFWR/Ft. Worth, joining co-host **Heywood** for the *Heywood & McCoy* morning show. Blanford replaces **Steve Harmon**, who left in September and is currently doing mornings at WCMC/Raleigh. Also at KFWR, MD/evening host **Chuck Taylor** adds APD responsibilities.

There's one more layoff at KFKF/Kansas City to add to the three we told you about last Friday. Morning show producer **Jim Daniels** (816-847-5545) has joined middayer **Rusty Walker** (816-721-2728), ND/morning news anchor **Randy Birch** (913-422-3395) and night talent **Tim Peters** (913-568-7179) as budget casualties. KFKF, along with Country sister KBEQ and two other CBS Radio/KC clustermates, were sold to Wilks in Oct. and LMAed by Wilks on Nov.1.

**Gig Alert:** WRDU/Raleigh PD **Trey Cooler** is looking for afternoon drive host after last week's departure of **Bob "The Blade."** Send your resume and aircheck to Cooler at [treycooler@clearchannel.com](mailto:treycooler@clearchannel.com).

**Networks & Syndication:** **Blair Garner**'s new 7pm to midnight offering *The Blair Garner Show* is now heard on more than 30 affiliates.

**Benefit News:** KNIX/Phoenix morning hosts **Tim & Willy** hold their Christmas Breakfast Show at

## TUBE CHECK

**Tuesday (12/5)** – Craig Morgan, *Grand Ole Opry Live* (GAC); Amy Grant, *Three Wishes* (CMT).

**Wednesday (12/6)** – Kenny Chesney, Brad Paisley, Reba McEntire, Gretchen Wilson, LeAnn Rimes, Dierks Bentley, Sara Evans, Terri Clark, Randy Owen, *GAC Specials* (GAC).

**Thursday (12/7)** – Darryl Worley, Emerson Drive, *Top 20 Countdown* (CMT).

**Friday (12/8)** – Martina McBride, *Master Series* (GAC)

**Saturday (12/9)** – Dierks Bentley, Loretta Lynn, Chris Young, Raul Malo, *Grand Ole Opry Live* (GAC); Carrie Underwood, Heartland, Toby Keith, *CMT Insider* (CMT); Taylor Swift, *GAC Specials* (GAC); Reba McEntire, *CMT Insider Special Edition: Charlotte's Web* (CMT).

**Sunday (12/10)** – Martina McBride, Pat Benatar, *CMT Crossroads* (CMT); Phil Vassar, *GAC Specials* (GAC).

**Monday (12/11)** – Barbara Mandrell, *Master Series* (GAC).

Night on Dec. 9, with proceeds benefiting their Kid's Fun-Dation. **Terri Clark** and **The Trailer Park Troubadours** are among the performers scheduled.

## Music News

Rhino will release *The Very Best Of Travis Tritt*, a 20-song hits collection, on Jan. 30.

**Jason Meadows**, first runner up from the third season of *Nashville Star*, has signed with Baccarstick Records. Meadows' first single "100% Cowboy" is due in January.

©2006 Country Aircheck™ — All rights reserved. To subscribe visit [www.countryaircheck.com](http://www.countryaircheck.com)

This "House" is rockin'...Come on in!

**DONOVAN CHAPMAN** HIS DEBUT HIT SINGLE  
**"HOUSE LIKE THAT"**

**New this week: WWYZ, KIXZ & KQFC.**  
**Phones already at WXBQ, WFBE, WQBE and KKNQ.**

**Double Digit spins already at: WXBQ (17x), KTOM (16x), WNCY (15x), WQBE (17x), WPOR (13x), WXCX (10x), WSJR (13x), KJUG (14x).**

**Already at (47) on the MB Building Chart. Add "House" today!**

"I have been in Radio and Records for the past 28 years; it has been awhile since I have been this excited over a new artist. Donovan Chapman is our next STAR!"  
 -Jim Dorman, PD, WSJR/Wilkes Barre

## Industry News

GAC will build a 7,200 square foot television studio on the ground level of its 49 Music Square West headquarters in Nashville. Once operational in late 2007, the facility will allow the network to move most of its productions in-house.

Nashville's Bluebird Cafe is holding its annual Christmas benefit for the Nashville Humane Society on Dec. 19. Artists participating include **Crystal Gayle, John Prine, Jonell Mosser and Bob DiPiero**. Details at [www.bluebirdcafe.com](http://www.bluebirdcafe.com).

Waterstone Guitars has created a limited edition guitar in memory of late SunTrust banking executive **Brian Williams**. Proceeds will benefit an educational trust set up for Williams' children.

## Artist News

**Dolly Parton** was honored at last night's (12/3) Kennedy Center Honors bash, after formally receiving the arts award at the State Department Saturday. **Vince Gill, Reba McEntire, Alison Krauss and Shania Twain** were among the artists paying tribute.

**Josh Gracin, Reba McEntire, Trisha Yearwood and Little Big Town** are among the artists featured on the soundtrack for the Disney DVD release *The Fox And The Hound 2*.

**LeAnn Rimes** will host the 25th Annual Colgate Country Showdown National Finals on Jan. 25 in Nashville. Rimes will perform two songs on the show as well.

**Gary Nichols** has partnered with Dippin' Dots, which will offer sponsorship support for his tour and 2007 album release. Nichols recently performed for Dippin' Dots franchisees at their convention in Las Vegas.

**John Conlee** joins artists including **B.J. Thomas and Eartha Kitt** for the lighting of the National Christmas Tree on Thursday (12/7) in Washington.

**Trace Adkins** will kick off his Dangerous Man

## BIRTHDAYS

**Tuesday (12/5)** - Ray Scott, Gary Allan, Tyler England, Jim Messina, Lara Mosby, Little Richard, Dan Hollander ([wlx@bellsouth.net](mailto:wlx@bellsouth.net))

**Wednesday (12/6)** - Helen Cornelius, Rick Rockhill ([rrockhill@curb.com](mailto:rrockhill@curb.com)), Pam Russell

**Thursday (12/7)** - Andy Childs, Gary Morris

**Friday (12/8)** - Marty Raybon, Rhonda Hart, Ashley Clark, Heather Conley ([heather.conley@disney.com](mailto:heather.conley@disney.com)), Mark McKay ([mark@eagle97.com](mailto:mark@eagle97.com))

**Saturday (12/9)** - Sylvia Hutton, David Kersh

**Sunday (12/10)** - Johnny Rodriguez, Kevin Sharp, Darcy Miller-Lashinsky

**Monday (12/11)** - Brenda Lee, Tony Brown, Kristen Williams ([kristen.williams@wbr.com](mailto:kristen.williams@wbr.com))

Send birthdays to [news@countryaircheck.com](mailto:news@countryaircheck.com).

Tour on Feb. 2 in Fairfax, VA. **Craig Morgan** and **Danielle Peck** are also on the bill, with a dozen dates already on the books through March.

## Life Notes

Heartiest congratulations to Lyric Street West Coast regional **Chris Loss**, who married **Alison Gumbiner** in Phoenix yesterday (12/3).

## Milestones

We're saddened to report that ABC Radio Networks' morning personality **Dave Marcum** succumbed to cancer on Dec. 3. He was 52. Marcum was a 30-year radio vet whose Country experience included stints at WMZQ/Washington DC, KVET/Austin and "The Ranch" in Ft. Worth, TX. He is

©2006 Country Aircheck™ — All rights reserved. Send news to [news@countryaircheck.com](mailto:news@countryaircheck.com)

# Tracy Lawrence

"Find Out Who Your Friends Are"

WELCOMING THESE "FRIENDS" HOME FOR THE HOLIDAYS!

## ADDED THIS WEEK:

WDSY/Pittsburgh	WYCD/Detroit	WDTW/Detroit
KXKT/Omaha	WBCT/Grand Rapids	WTNR/Grand Rapids
WFBE/Flint, MI	KRRV/Alexandria, LA	

From the forthcoming new studio release "For The Love"





survived by his wife, Amy, who is an AE with KLTY/Dallas. Services are set for 3pm Wednesday at the First Presbyterian Church of Dallas.

**Friday, Dec. 1:** Budget cuts at Wilks/Kansas City resulted in lay-offs at Country KFKF. Exiting are 9am-1pm talent **Rusty Walker**, evening personality **Tim Peters** and News Director/morning news anchor **Randy Birch**. MD/late middayer **Tony Stevens** will now do 9am-2pm and PM driver **Dan Holiday** will extend his shift to 2-7pm. The moves come one month after Wilks took control of four CBS Radio stations in KC -- including Country KFKF & KBEQ -- under an LMA.

KALF/Chico, CA VP/GM **Dick Stein** and Production Director **Mark Chase** have been let go as the station, along with nine others, changes hands from Regent to Mapleton. Yesterday we told you that KALF/Chico, CA PD/PM **Scott Michaels** was exiting. Michaels can be reached at [scottmyr@sbcglobal.net](mailto:scottmyr@sbcglobal.net).

Cumulus WLXX/Lexington midday host and cluster Director/Production & Creative Services **Karl Shannon** has exited. The 34-year radio vet is looking for his next opportunity. Reach him at 859-269-4157 or [karlshannon@insightbb.com](mailto:karlshannon@insightbb.com).

Thomas Nelson Publishers will release a book and CD package based on **Sara Evans'** song "You'll Always Be My Baby." The gift book is available nationwide this month.

CMA is taking **Julie Roberts** and **Jace Everett** to Europe in January for the New From Nashville 2007 showcase series. Stops are planned in London, Dublin and Glasgow.

Leadership Music has added two staffers, Administrative Coordinator **Maria Nielson** and Events Administrative Coordinator **Cori Dodson**. Nielson previously worked for Unisys in Atlanta, while Dodson comes over from the Catering Sales Manager position at the Sheraton Music City.

## RATE CHECK

Effective January 1, **Country Aircheck** will begin offering four subscription packages. They are:

**The Add:** A single user subscription that includes daily email news reports and breaking news blasts. FREE!

**Light:** Single user subscription includes daily email news reports, breaking news blasts, the weekly Music Edition pdf and one copy of each of our special print editions. \$199 annually. (Note: Only available to individuals or companies with five or fewer employees).

**Medium:** Multi-user subscription includes daily email news reports, breaking news blasts and the weekly Music Edition pdf sent to up to EIGHT (8) email accounts, with one copy of each of our special print editions mailed to main location. \$299 annually.

**Heavy:** Multi-user subscription includes daily email news reports, breaking news blasts, the weekly Music Edition pdf sent to up to TWELVE (12) email accounts, with FIVE (5) copies of each of our special print editions mailed to location(s) of your choosing. \$599 annually.

903's **Darryl Worley**, Equity's **Mark Wills** and **Keni Thomas** will tour the Persian Gulf as part of the USO's Hope and Freedom Tour 2006. The tour will make a number of undisclosed stops to perform for and visit with U.S. troops in the region.

**Thursday, Nov. 30:** WKLB/Boston moves up the dial from 99.5 to 102.5 (12/1), giving the station a bigger and better signal, particularly to the south and southwest of the city.

KALF/Chico, CA PD/afternoon host **Scott Michaels** has left the station as a result of the recent change in ownership. Regent Broadcasting sold 10 stations serving Chico and Redding, CA to Mapleton Communications in July for \$17.5 million cash.

**Diane Bearden** has joined CMA as Senior Manager/Meetings & Events. Bearden started with CMA in September after first working with the organization as the Event Manager at New York's Marriot Marquis during the 2005 CMA Awards.

©2006 Country Aircheck™ — All rights reserved. To subscribe visit [www.countryaircheck.com](http://www.countryaircheck.com)

Capitol Records Nashville proudly introduces

# LUKE BRYAN

## ALL MY FRIENDS SAY...

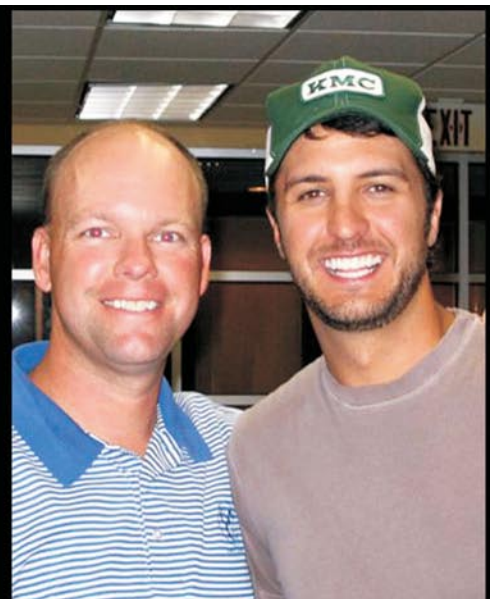
"Luke is the real deal. His music is so relatable and he is country to the core. Just talk to him once... you can't fake that!"

CLAY HUNNICUTT / VP of Country Programming / Regional VP of Programming-Clear Channel



[www.lukebryan.com](http://www.lukebryan.com)  
[www.capitolnashville.com](http://www.capitolnashville.com)

"ALL MY FRIENDS SAY"  
 Debut single coming January 2007



**VIDEO ADDS****CMT****EMERSON DRIVE**/Moments (Midas)**DARRYL WORLEY**/I Just Came Back From A War (903 Music)**CMT Pure Country****CLAY WALKER**/'Fore She Was Mama (Curb)**GAC****EMERSON DRIVE**/Moments (Midas)**CLAY WALKER**/'Fore She Was Mama (Curb)**RUSHLOW HARRIS**/Bagpipes Cryin' (Show Dog)**BLAKE SHELTON**/Don't Make Me (Warner Bros.)

*American Idol* finalist **Bucky Covington** has joined the GAC Country Music Christmas Tour, filling the slot vacated by **Buddy Jewell** who recently broke his wrist. **Deana Carter**, **Julie Roberts**, **Blue County**, and **Steve Azar** are also on the bill.

**Wednesday, Nov. 29:** WSM-AM/Nashville's OM slot has been filled by **Sam Easley**, who recently worked for Cromwell Radio Group's Nashville cluster.

**Rascal Flatts'** Me And My Gang Tour wrapped Nov. 3 after playing for 1,032,332 fans in 74 cities since the beginning of 2006, setting a new record for the group. Last year's tour played to 750,000 fans. The band sold out 61 venues during the year. In other news, Rascal Flatts will participate in the Grammy nominations announcement on Feb. 11.

The RIAA has issued platinum certification for **George Strait's** *It Just Comes Natural*. It is Strait's 32nd platinum cert.

ASCAP Senior VP **Connie Bradley** will receive the Nashville Symphony's 2006 Harmony Award during the Symphony Ball in Nashville on Dec. 9. The award is the event's highest honor, bestowed

in recognition of continued interest and support of music in Nashville.

**Tuesday, Nov. 28:** Former Clear Channel/Tuscaloosa, AL OM **Russ Williams** has been named PD for New South Radio's WUSJ/Jackson, MS. Williams replaces **Tom Freeman** who recently went to work for Public Radio of Mississippi. While in Tuscaloosa, Williams programmed Country WTXN and Classic Rock WRTR while overseeing the four station cluster. Clear Channel recently merged its Tuscaloosa and Birmingham operations.

*Broken Bridges*, **Toby Keith's** feature film debut, makes its television premiere on Friday, Dec. 15 on CMT. The film releases in DVD format on Jan. 9 with a number of special features including a Toby Keith concert clip.

- **Lon Helton**, [lon@countryaircheck.com](mailto:lon@countryaircheck.com)  
**Chuck Aly**, [chuck@countryaircheck.com](mailto:chuck@countryaircheck.com)  
 (615) 244-4484

**REACH US**

Country Aircheck is located at 9 Music Square West, Nashville, TN 37203. Our phone is 615-244-4484, fax is 615-244-5699.

Send news, birthdays, and gig alerts to:  
[news@countryaircheck.com](mailto:news@countryaircheck.com)

Reach **Lon Helton** at [lon@countryaircheck.com](mailto:lon@countryaircheck.com),  
**Chuck Aly** at [chuck@countryaircheck.com](mailto:chuck@countryaircheck.com),  
**Mary Forest Campbell** at [maryforest@countryaircheck.com](mailto:maryforest@countryaircheck.com)  
 and **Kelley Keith** at [kelley@countryaircheck.com](mailto:kelley@countryaircheck.com).

©2006 Country Aircheck™ — All rights reserved. To subscribe visit [www.countryaircheck.com](http://www.countryaircheck.com)

**NOT PLAYING A RECORD YOUR AUDIENCE IS TELLING YOU THEY LOVE  
 NOW THAT'S A "RED FLAG"**

**CODY McCARVER**

**"RED FLAG"**

**JUST ADDED AT:  
 KRKY/SAN JOSE,  
 KUBL/SALT LAKE CITY  
 & KVOX/FARGO!**





LW	TW	Artist/Title (Label)	Total Points +/- Points	Total Plays +/- Plays	Audience +/- Aud	Stations	ADDS
1	1	RASCAL FLATTS/My Wish (Lyric Street)	14313 206	5006 57	44.326 1.395	124	0
4	2	SUGARLAND/Want To (Mercury)	13916 422	4899 145	42.209 1.482	124	0
2	3	CARRIE UNDERWOOD/Before He Cheats (Arista)	13652 -72	4659 -87	42.496 0.19	124	0
5	4	TIM MCGRAW/My Little Girl (Curb)	13184 314	4628 106	39.128 0.544	124	0
3	5	KENNY CHESNEY/You Save Me (BNA)	13003 -682	4562 -169	39.227 -2.07	124	0
6	6	BRAD PAISLEY/She's Everything (Arista) ✓	11922 753	4198 282	34.871 2.516	123	0
7	7	MONTGOMERY GENTRY/Some People... (Columbia)	10949 68	3746 42	32.483 0.54	124	0
8	8	GEORGE STRAIT/It Just Comes Natural (MCA)	10422 553	3604 214	31.784 1.66	124	1
11	9	RODNEY ATKINS/Watching You (Curb) ✓	9528 1357	3337 443	28.532 4.365	123	0
9	10	TAYLOR SWIFT/Tim McGraw (Big Machine)	9061 421	3071 96	26.7 1.119	124	1
10	11	LONESTAR/Mountains (BNA)	8560 346	2964 67	26.146 1.146	123	0
12	12	JASON ALDEAN/Amarillo Sky (BBR)	7705 30	2849 32	22.507 0.425	124	0
13	13	CRAIG MORGAN/Little Bit Of Life (BBR)	6509 191	2391 50	18.75 0.737	124	4
15	14	WRECKERS/My, Oh My (Warner Bros.)	6375 516	2114 140	17.512 1.174	123	4
14	15	TRENT TOMLINSON/One Wing In The Fire (Lyric Street)	6330 355	2314 91	16.974 0.959	124	3
17	16	JASON MICHAEL CARROLL/Alyssa Lies (Arista)	5654 335	2034 123	15.878 1.133	123	3
16	17	EMERSON DRIVE/A Good Man (Midas)	5600 -180	2040 -126	15.504 -0.553	124	0
19	18	TRACE ADKINS/Ladies Love Country Boys (Capitol)	5132 344	1932 143	14.157 0.944	122	2
20	19	JOE NICHOLS/I'll Wait For You (Universal South)	4686 139	1833 57	11.78 0.071	121	6
21	20	ERIC CHURCH/Two Pink Lines (Capitol)	4532 265	1630 68	12.37 0.861	119	1
22	21	DARRYL WORLEY/I Just Came Back... (903 Music)	4182 -2	1466 60	10.734 -0.419	120	7
24	22	KELLIE PICKLER/Red High Heels (BNA)	3904 182	1348 71	11.213 1.002	116	3
26	23	MARTINA MCBRIDE/Anyway (RCA) ✓	3895 930	1283 367	11.806 2.94	114	17
23	24	PHIL VASSAR/The Woman In My Life (Arista)	3881 52	1495 33	9.92 0.439	121	0
25	25	SARA EVANS/You'll Always Be My Baby (RCA)	3846 219	1445 55	10.304 0.824	121	4

©2006 Country Aircheck™ — All rights reserved. ✓=Top 5 point gainers. [www.countryaircheck.com](http://www.countryaircheck.com)



"This could be THE one that tests for radio." - *Mad Dawg*, WQDR

"Perfect fit for Gretchen's image with early female phones, too. She still has the 'oh wow' appeal." - *Evan Bridwell*, KUZZ

"This song could not be more direct. Well, it could, but then we wouldn't be able to play it! Nice job!" - *Savannah Jones*, KWJJ

*come to bed* the new single from  
**gretchen wilson**

New airplay today from WKDF, KTST, KBQI, KIZN, KQFC & WPCV  
Double-digit spins already at KSCS, KTYS, KKWF, WKIS, KSD, KBEQ, KWJJ, KUZZ  
and dozens more

Look for Gretchen on her "Back To The Bars" tour this month and early 2007

COLUMBIA NASHVILLE  
© 2006 SONY BMG MUSIC ENTERTAINMENT.  
SONY & BMG NASHVILLE

LW	TW	Artist/Title (Label)	Total Points	+/- Points	Total Plays	+/- Plays	Audience	+/- Aud	Stations	ADDS
32	26	KEITH URBAN/Stupid Boy (Capitol) ✓	3578	1313	1195	469	10.499	3.364	105	31
27	27	LITTLE BIG TOWN/Good As Gone (Equity)	2933	102	1076	49	7.933	0.27	110	4
30	28	GARY ALLAN/A Feelin' Like That (MCA)	2914	325	1028	109	8.48	0.801	99	14
29	29	VINCE GILL/The Reason Why (MCA)	2850	244	953	64	7.479	0.807	110	3
28	30	SARAH BUXTON/Innocence (Lyric Street)	2526	-181	971	-61	6.402	-0.611	117	1
31	31	CLAY WALKER/'Fore She Was Mama (Curb/Asylum)	2519	10	937	39	6.96	0.397	103	2
33	32	BROOKS & DUNN/Hillbilly Deluxe (Arista)	2359	179	976	70	5.938	0.745	98	16
35	33	KEITH ANDERSON/Podunk (Arista)	1871	91	622	27	4.506	0.299	96	1
34	34	FAITH HILL/Stealing Kisses (Warner Bros.)	1871	38	742	18	4.427	0.018	107	1
38	35	BILLY CURRINGTON/Good Directions (Mercury)	1641	238	677	107	4.354	0.764	92	4
44	36	JACK INGRAM/Lips Of An Angel (Big Machine) ✓	1628	700	463	190	4.672	1.736	61	14
40	37	DIERKS BENTLEY/Long Trip Alone (Capitol)	1495	393	557	125	4.112	1.114	74	16
41	38	ASHLEY MONROE/I Don't... (w/Ronnie Dunn) (Columbia)	1471	375	557	127	3.319	0.875	92	0
36	39	LEANN RIMES/Some People (Curb/Asylum)	1302	-477	530	-191	3.626	-1.149	96	1
39	40	JAKE OWEN/Startin' With Me (RCA)	1293	131	500	45	2.729	0.213	62	5
43	41	JOSH GRACIN/I Keep Coming Back (Lyric Street)	1094	151	396	36	2.631	0.58	59	7
47	42	PAT GREEN/Dixie Lullaby (BNA)	1005	151	351	52	2.567	0.491	56	6
46	43	BLAKE SHELTON/Don't Make Me (Warner Bros.)	996	111	397	24	2.11	0.235	50	3
42	44	JOSH TURNER/Me And God (MCA)	995	5	330	30	2.563	0.018	54	2
49	45	JOHN MELLENCAMP/Our Country (Universal Republic)	915	171	235	53	2.42	0.403	26	6
45	46	GRETCHEN WILSON/Come To Bed (Columbia)	908	19	351	20	1.962	0.169	53	5
50	47	JIMMY WAYNE/That's All I'll Ever Need (Big Machine)	819	133	320	52	1.607	0.106	83	0
48	48	TRACY LAWRENCE/Find Out... (Rocky Comfort/CO5)	763	-37	334	-34	2.035	-0.048	50	4
Debut	49	DANIELLE PECK/Isn't That Everything (Big Machine)	649	86	259	22	1.556	0.299	34	3
Debut	50	STEVE HOLY/Come On Rain (Curb)	513	41	234	23	0.905	0.059	42	3

©2006 Country Aircheck™ — All rights reserved. ✓=Top 5 point gainers. [www.countryaircheck.com](http://www.countryaircheck.com)

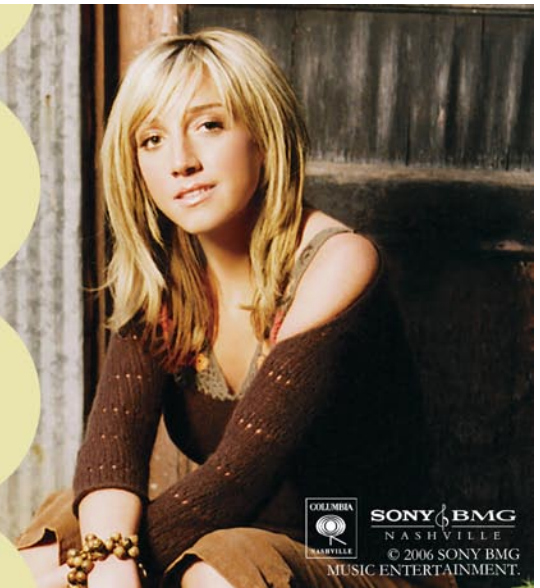
- \* 83% PICK @ After Midnite
- \* 18% Leap On This Week's Digital Sales Chart
- \* Heavy Rotation @ CMT/Top 10 Streamed Video @ CMT.com
- \* 3000 spins a day @ myspace.com
- \* New airplay at KFRG & WSOC

## "I DON'T WANT TO"

The Columbia single from  
**ashleymonroe**  
 with RONNIE DUNN

39\* R&R/BDS  
 38\* Aircheck/Mediabase

"This song has great tempo and Ronnie Dunn puts it over the top." — Hevin Christopher, KKNZ  
**Her time is NOW.**



SONY BMG  
 NASHVILLE  
 © 2006 SONY BMG  
 MUSIC ENTERTAINMENT.



**Aircheck Add Leaders**

<b>KEITH URBAN</b> /Stupid Boy (Capitol)	31
<b>MARTINA MCBRIDE</b> /Anyway (RCA)	17
<b>BROOKS &amp; DUNN</b> /Hillbilly Deluxe (Arista)	16
<b>DIERKS BENTLEY</b> /Long Trip Alone (Capitol)	16
<b>GARY ALLAN</b> /A Feelin' Like That (MCA)	14
<b>JACK INGRAM</b> /Lips Of An Angel (Big Machine)	14
<b>DARRYL WORLEY</b> /I Just Came Back... (903 Music)	7
<b>JOSH GRACIN</b> /I Keep Coming Back (Lyric Street)	7
<b>BLUE COUNTY</b> /I Get To (Curb/Asylum)	6
<b>JOE NICHOLS</b> /I'll Wait For You (Universal South)	6
<b>JOHN MELLENCAMP</b> /Our Country (Universal/Republic)	6
<b>PAT GREEN</b> /Dixie Lullaby (BNA)	6

**Leading Point Gainers**

<b>RODNEY ATKINS</b> /Watching You (Curb)	+1357	✓
<b>KEITH URBAN</b> /Stupid Boy (Capitol)	+1313	✓
<b>MARTINA MCBRIDE</b> /Anyway (RCA)	+930	✓
<b>BRAD PAISLEY</b> /She's Everything (Arista)	+753	✓
<b>JACK INGRAM</b> /Lips Of An Angel (Big Machine)	+700	✓
<b>GEORGE STRAIT</b> /It Just Comes Natural (MCA)	+553	
<b>WRECKERS</b> /My, Oh My (Warner Bros.)	+516	
<b>SUGARLAND</b> /Want To (Mercury)	+422	
<b>TAYLOR SWIFT</b> /Tim McGraw (Big Machine)	+421	
<b>DIERKS BENTLEY</b> /Long Trip Alone (Capitol)	+393	

**Leading Spin Gainers**

<b>KEITH URBAN</b> /Stupid Boy (Capitol)	+469
<b>RODNEY ATKINS</b> /Watching You (Curb)	+443
<b>MARTINA MCBRIDE</b> /Anyway (RCA)	+367
<b>BRAD PAISLEY</b> /She's Everything (Arista)	+282
<b>GEORGE STRAIT</b> /It Just Comes Natural (MCA)	+214
<b>JACK INGRAM</b> /Lips Of An Angel (Big Machine)	+190
<b>SUGARLAND</b> /Want To (Mercury)	+145
<b>TRACE ADKINS</b> /Ladies Love Country... (Capitol)	+143
<b>WRECKERS</b> /My, Oh My (Warner Bros.)	+140
<b>ASHLEY MONROE</b> /I Don't Want To (Columbia)	+127

**Aircheck Top Recurrents**

	Points
<b>HEARTLAND</b> /I Loved Her First (Lofton Creek)	7153
<b>DIERKS BENTLEY</b> /Every Mile A Memory (Capitol)	6211
<b>JOSH TURNER</b> /Would You Go With Me (MCA)	6190
<b>RODNEY ATKINS</b> /If You're Going... (Curb)	6118
<b>GEORGE STRAIT</b> /Give It Away (MCA)	5064
<b>WRECKERS</b> /Leave The Pieces (Warner Bros.)	4829
<b>BRAD PAISLEY</b> /The World (Arista)	4259
<b>KEITH URBAN</b> /Once In A Lifetime (Capitol)	3997
<b>STEVE HOLY</b> /Brand New Girlfriend (Curb)	3914
<b>TOBY KEITH</b> /Crash Here Tonight (Show Dog)	3452
<b>JACK INGRAM</b> /Love You (Big Machine)	3105
<b>RASCAL FLATTS</b> /Life Is A Highway (Disney)	2954
<b>JOSH TURNER</b> /Your Man (MCA)	2761
<b>RASCAL FLATTS</b> /What Hurts The Most (Lyric Street)	2524
<b>BILLY CURRINGTON</b> /Must Be Doing... (Mercury)	2451
<b>BON JOVI w./ J. NETTLES</b> /Who Says... (Mercury)	2446
<b>BROOKS &amp; DUNN</b> /Building Bridges (Arista)	2428
<b>KEITH URBAN</b> /Better Life (Capitol)	2340
<b>TOBY KEITH</b> /A Little Too Late (Show Dog)	2283
<b>LITTLE BIG TOWN</b> /Bring It On Home (Equity)	2039

**Aircheck Add Dates****December 11**

**CAROLINA RAIN**/Isn't She (Equity)  
**JACK INGRAM**/Lips Of An Angel (Big Machine)  
**EMERSON DRIVE**/Moments (Midas)

**January 8**

**ALISON KRAUSS, JOHN WAITE**/Missing You (Rounder)  
**ALAN JACKSON**/A Woman's Love (Arista)

**January 22**

**JASON MEADOWS**/100% Cowboy (Baccarstick)

**Holiday Singles**

**SONNY BURGESS**/The Stars Haven't Changed... (CPI)  
**JACK INGRAM**/Jingle Bells (Big Machine)  
**TOM WURTH**/Away In A Manger (Aspirion)

©2006 Country Aircheck™ — All rights reserved. To subscribe visit [www.countryaircheck.com](http://www.countryaircheck.com)

**DARE WE SAY, A CAREER SONG? YES WE DO!!**

**"Moments"**

**THE CAREER SONG FROM EMERSON DRIVE**

**INSTANT ADDS AT CMT AND GAC (TURBO TRACK)**

**IMPACTING RADIO: 12/11!!**



Montage Music MIDAS

## Aircheck Activity

### JOHN MELLENCAMP/Our Country (Republic/Universal South)

Moves 49\*-45\*; 915 points, 235 spins

6 ADDS: **KJUG, KPLX\*, WCOL, WITL\*, WWGR, WXTU**

Stations with 7 or more spins: 14

Significant spins: **WCTK** (44), **KSCS** (25),  
**KTOM** (20), **WBCT** (18), **KMLE** (13), **WGAR** (12)

### GRETCHEN WILSON/Come To Bed (Columbia)

Moves 45\*-46\*; 908 points, 351 spins

5 ADDS: **KBQI, KIZN\*, KQFC, KTST, WKDF\***

Stations with 7 or more spins: 24

Significant spins: **KTYS** (22), **KUZZ** (18), **KKWF** (18),  
**KTOM** (18), **KBEQ** (17), **KWJJ** (12)

### JIMMY WAYNE/That's All I'll Ever Need (Big Machine)

Moves 50\*-47\*; 819 points, 320 spins

0 ADDS

Stations with 7 or more spins: 15

Significant spins: **KBEQ** (25), **WXBQ** (21), **WWNU** (20),  
**WGTY** (18) **KTOM** (18), **WQMX** (16)

### TRACY LAWRENCE/Find Out Who Your Friends Are (Rocky Comfort/CO5)

Remains 48\*; 763 points, 334 spins

4 ADDS: **KXKT, WBCT, WDSY\*, WTNR**

Stations with 7 or more spins: 18

Significant spins: **KSOP** (40), **KSD** (34),  
**KAJA** (33), **KKNG** (28), **KUZZ** (20), **KTEX** (19),  
**WNKT** (19)

### DANIELLE PECK/Isn't That Everything (Big Machine)

649 points, 259 spins

3 ADDS: **KNCI\*, WIL, WKDF\***

Stations with 7 or more spins: 17

Significant spins: **KHKI** (17), **WDSY** (16),  
**WCTK** (15), **KATM** (15), **KNCI** (14), **KATM** (13),  
**WGNE** (13)

### STEVE HOLY/Come On Rain (Curb)

Debuts at 50\*, 513 points, 234 spins

3 ADD: **KBQI, KTOM, WSJR\***

Stations with 7 or more spins: 11

Significant spins: **WNKT** (22), **KJUG** (17), **KHKI** (13),  
**KNIX** (12), **KTEX** (9)

### DONOVAN CHAPMAN/House Like That (Category 5)

400 points, 168 spins

3 ADDS: **KIXZ, WSJR\*, WWYZ**

Stations with 7 or more spins: 10

Significant spins: **KTOM** (17), **WXBQ** (17), **KJUG** (14),  
**WSJR** (13), **WGTY** (8)

### RUSHLOW HARRIS/Bagpipes Cryin' (Show Dog)

377 points, 187 spins

4 ADDS: **KTST, KUZZ, WGGY, WQYK\***

Stations with 7 or more spins: 11

Significant spins: **WRNS** (18), **KJUG** (14),  
**KHKI** (13), **WXBQ** (12)

### GARY NICHOLS/I Can't Love You Anymore (Mercury)

349 points, 181 spins

0 ADDS

Stations with 7 or more spins: 11

Significant spins: **WWNU** (20), **KHKI** (18), **KRTY** (12)

### MIRANDA LAMBERT/Crazy Ex-Girlfriend (Columbia)

330 points, 136 spins

3 ADDS: **KJUG, KXKT, WCTK**

Stations with 7 or more spins: 6

Significant spins: **KTYS** (26), **KSKS** (15), **KHKI** (15)

*Aircheck Activity includes songs that rank 45-50 on this week's chart or are those that are not charted and have a minimum of 300 airplay points and have shown growth in two of the past three weeks. (\* indicates auto adds)*

©2006 Country Aircheck™ — All rights reserved. Send news to [news@countryaircheck.com](mailto:news@countryaircheck.com)

## THE COUNTRY MUSIC EDUTAINMENT HOUR™

WITH YOUR HOST WAYNE MANNING, THE COUNTRY COLLEGE COWBOY™

### THE COUNTRY MUSIC EDUTAINMENT HOUR™ IS:

POP  
QUIZ:

- Spectabulous, fantabulous, outstandical and just plain entercational!
- The show that preserves the history of country music, inside and out - Nashville to New York, California to the Carolina's and all stops in between!
- Information about country music and country music legends that you never knew!
- More fun than a dog in a hubcap factory!
- All of the above!

CORRECT ANSWER: E!!! ALL OF THE ABOVE!



# COWBOY®

**CONTACT US IMMEDIATELY TO AIR**

**THE COUNTRY MUSIC EDUTAINMENT HOUR™ IN YOUR MARKET!**

CALL (801) 361-2993, EMAIL [COUNTRY\\_COLLEGE\\_RADIO@YAHOO.COM](mailto:COUNTRY_COLLEGE_RADIO@YAHOO.COM)

OR LOG ON TO [WWW.KTMP1340.COM/EDU.HTM](http://WWW.KTMP1340.COM/EDU.HTM) FOR YOUR FREE SAMPLE CD OF THE SHOW.