

COUNTRY AIRCHECK

ISSUE 18

MUSIC EDITION

DECEMBER 18, 2006

EMERSON DRIVE

moments

CA: High Debut (43) #1 Most Added - 2 Weeks!

R&R: High Debut 49* #1 Most Added - 2 Weeks!



Chesney, Flatts & Arista Tops In '06

Country **Aircheck**'s inaugural print edition proclaims **Kenny Chesney** as the format's Top Performer of 2006. The same issue crowns Arista/Nashville as the Label of the Year and shows **Rascal Flatts**' "What Hurts The Most" leading the Top 100 Songs.

Chesney took top artist honors on the strength of four Top 15 hits, two of which spent a combined four weeks at No. 1. All four rank among the year's Top 100 tunes. The ACM and CMA Entertainer of the Year for 2006 also fielded one of the year's top-grossing tours with his "The Road & The Radio" extravaganza, which also boasted six stadium shows this past year.

Rascal Flatts' No. 1 song of 2006 helped propel the band to dizzying -- or is it Disneying? -- heights. The band concluded 2006 as the best selling artist across all genres of music. It was the second consecutive year RF was the best selling Country artist, but, according to the label, the first time in 14 years that a country artist ended the year with the best selling artist album. The last country artist to accomplish that feat was Billy Ray Cyrus in 1992. The band's *Me And My Gang* CD is the only artist album released in 2006 to be certified triple platinum by the RIAA.

The debut **Country Aircheck** print issue, which hits the street Tuesday, features an interview with Sony BMG Chairman **Joe Galante** and Arista/Nashville VP/Promotion **Skip Bishop**. Galante describes working one superstar

NEW REPORTERS; ACTIVATOR REPORTERS SOUGHT

KCYE (Coyote)/Las Vegas and WTDW (The Fox)/Detroit have been added to the **Country Aircheck/Mediabase** Country panel. Their airplay information from Dec. 31, 2006-Jan. 6, 2007 will be included in the Jan. 8, 2007 chart. Stations not qualifying for the panel because of low ratings or current percentages will be announced later this week.

Country Aircheck is also accepting application for its new "Activator Chart" panel. The first Activator Chart will appear in the January 8 **Music Edition**. Compiled in conjunction with **Mediabase**, the Activator panel will be a combination of stations monitored by Mediabase and reporters submitting their playlists via the internet. Submit a request to reporter@countryaircheck.com. Please include 25-54 ratings info for the past year -- shares and rank -- and a current playlist. In addition to being ratings winners, Activator Reporters must maintain a current percentage of 25% and be willing to submit ADDS in the case of Mediabase monitored stations and current airplay lists and ADDS in the case of non-monitored reporters. Submissions are due by December 21, 2006.

act's single this past year as "a slugfest." But Bishop, who assumed the VP role just over a year ago, says the struggle with the single was what made his new group "gel as a team."

All this, plus the songs that hit the Top 15 in 2006 and the year in memories from some of the industry's top execs, coming to you this week.

©2006 Country Aircheck™ — All rights reserved. To subscribe visit www.countryaircheck.com



Trace Adkins



Dierks Bentley



Eric Church



Luke Bryan

Happy Holidays

from your friends at

Capitol Records Nashville





Keith Urban



Kenny Rogers



Chris Cagle

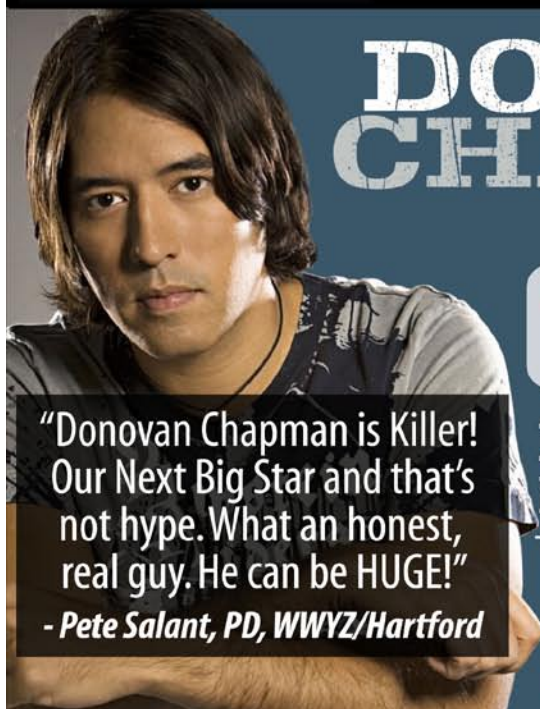


Jamie O'Neal



THANK YOU COUNTRY RADIO FOR MAKING OUR
FIRST YEAR ONE TO REMEMBER!

We wish you and your family all the best this holiday season and we look forward to bringing you great music and great artistry in 2007!



DONOVAN CHAPMAN

HIS DEBUT HIT SINGLE

"HOUSE LIKE THAT"

CA/MB: Debut (45) +97 spins & 256 points

R&R/BDS: New & Active +63 spins & +93K in audience.

"Donovan Chapman is Killer!
Our Next Big Star and that's
not hype. What an honest,
real guy. He can be HUGE!"

- Pete Salant, PD, WWYZ/Hartford

NEW TODAY:

KSD, WCTK, WPCV, KQFC, WTHI, KIXQ and KIAI.

DOUBLE DIGIT SPINS THIS WEEK AT:

KKWF, WWYZ, WXBQ, WBEE, KDRK, WQBE, KTOM,
WGTY, WPOR, WSJR, KJUG, KHKI and WTNR.

Thanks Country Radio for your support...we've only just begun to build this "House".
SEE YOU ON THE 8TH.



Category 5 Records
is proud to introduce

JERROD NIEMANN

and his debut HIT single

"I Love Women (My Momma Can't Stand)"

ON YOUR DESK THE FIRST OF THE YEAR FOR ADDS FEBRUARY 5TH.

Finis

This is the last **Music Edition** of 2006. The next full edition, with the first charts of the New Year, will arrive on Jan. 8, 2007. Today was also the last reporting day of the year. There will be no reports on Monday December 25 or January 1, 2007. Some dates to keep in mind:

>**Jan. 3, 2007:** The return of **Country Aircheck Today** with a news-only version of the **CA Music Edition** -- or Mini-ME, as we like to call it.

>**Jan. 8, 2007:** The first report day of 2007. Adds from Mediabase-monitored stations will be taken at www.airplayaddboard.com beginning Thursday morning Jan. 4 until Monday Jan. 8 at 3pm ET-Noon PT.

CC Lights Country In Atlanta

As reported in a **Country Aircheck Breaking News** update earlier today, Clear Channel flipped AC WLTM/Atlanta to Country at noon ET today. Despite denials from CC execs in November, we tipped the move on Nov. 17 and "94.9 The Bull" made its first appearance a week earlier than planned. WLTM has been using the strong come-magnet of all holiday music since mid-November but launched today with Alan Jackson's "Chattahoochie."

We can't yet tell you the name of the new PD, but station execs want airchecks and resumes for all dayparts -- including mornings and afternoons -- ASAP. They're also on the hunt for an on-air APD/MD and a Promotions Director. Send your stuff to 94.9 The Bull, 1819 Peachtree Rd., Ste. 200, Atlanta, GA 30309.

Radio News

Programming: KFDI/Wichita, KS MD/midday host **Carol Hughes** has been promoted to Asst. PD.

Networks & Syndication: Huntsman Entertainment has produced an album preview special for **John Anderson's Easy Money**. The special, hosted by **Blake Shelton**, is available Jan. 25 to Feb. 12. The album is due in May. Contact **Shantell Ogden** for details: shantell@huntsmanent.com.

DATE CHECK

February 27 - Country Radio & DJ Hall of Fame Dinner.
www.crb.org

February 28 to March 2 - CRS-38.
www.crb.org

May 15 - 42nd Annual ACM Awards.
www.acmcountry.com

June 7-10 CMA Music Festival
www.cmafest.com

Benefits: Congrats to all the folks at WUSN/Chicago on setting a new St. Jude "Country Cares" radiothon record of \$2,103,457. One of the few stations to air the fundraiser just before Christmas, US99 camped out at a local mall last Thursday and Friday. WUSN wrested the record-holding crown from KEEY/Minneapolis, which raised the bar to \$1,900,402 last February.

KKBQ & KTHT/Houston joined Cox clustermate Eighties KHPT last week for a radiothon raising more than \$1.1 million for cancer research and awareness at Texas Children's Hospital.

Industry News

Leadership Music and SOLID will hold the fifth annual Music Row Yard Sale on June 9 in Nashville during CMA Music Festival. The organizations are now accepting donations of industry swag and other items folks in the business are currently cleaning out of their offices. Items can be picked up on Music Row. Contact **Cori Dodson** at cori@leadershipmusic.org.

Nashville songwriter **Alice Randall** along with **Carter Little** and **Courtney Little** have authored *My Country Roots: The Ultimate MP3 Guide to America's Original Outsider Music*. The book includes more than 100 different playlists focused on some of the genre's most popular topics. **George Jones** wrote the book's forward.

The Canadian Country Music Association will hold its 2008 CCMA Week on Sept. 5-8 in Winnipeg. The 2007 event is already set for Sept. 7-10 in Regina, Saskatchewan.

©2006 Country Aircheck™ — All rights reserved. Send news to news@countryaircheck.com

Wishing you the Joy of the Season!

From the Curb and Asylum/Curb Labels
And the Great Artists we are proud to represent.



Happy Holidays!

Record News

Former Katapult Director/Regional Promotion **Chris Borchetta** has joined Big Machine as an independent artist development rep.

Effective Jan. 1, new Universal South Sr. VP/GM **Fletcher Foster** can be reached at 40 Music Square West, Nashville, 37203, phone 615-259-5300, fletcher.foster@umusic.com.

Former Warner Bros./Nashville Nat. Dir./Specialty Programming **Joe Redmond** has been named to the newly-created post of Dir./National Promotion for Cupit Records. Redmond can be reached at 615-731-0100, ext. 16; 615-414-5488 (cell); or joe@cupitmusic.com.

After 25 years in Music City, Montage's **Ted Wagner** is finally realizing one of his biggest dreams. No, his golf handicap did not hit zero. He will, however, grace the stage of the Grand Ole Opry Tuesday night (12/19) as member of **Jeff Bates'** band. Wagner will fill-in for regular bassist **Joel Van Tassel**, who scheduled a family vacation before the GOO date came up.

Artist News

Show Dog's **Rushlow Harris** are featured on the website for Mr. Coffee brand coffee makers, www.mrcoffee.com. The promotion features a link to a GAC *Short Cuts* series video clip about the duo. Rushlow Harris have also created an e-card campaign around their "Bagpipes Cryin'" single, which can be accessed at <http://bamah.com/ecard/rushlowharris/lettersfromhome/>.

Columbia's **Miranda Lambert** and Show Dog's **Flynnville Train** will open 2007 dates on **Toby Keith's** Hookin' Up & Hangin' Out Tour. The tour opens Jan. 25 in Albany, NY.

Curb's **Rodney Atkins** staged a benefit concert last week for Holston United Methodist Children's Home in Greenville, TN. The show, presented by WIVK/Knoxville, raised funds for the facility from which Atkins was adopted as an infant.

Lonestar and **Keni Thomas** will perform at Atlanta's 18th Annual Peach Drop 2007 on New Year's Eve.

TUBE CHECK

Tuesday (12/19) – Reba McEntire, Brooks & Dunn, Linda Davis, Vince Gill, *Top 10 Countdown*, (CMT).

Wednesday (12/20) – Billy Ray Cyrus, *The Collection*, (GAC).

Thursday (12/21) – Little Big Town, Blake Shelton, *Top 20 Countdown*, (CMT).

Friday (12/22) – Barbara Mandrell, Dolly Parton, Faith Hill, LeAnn Rimes, Martina McBride, Reba McEntire, *CMT Giants*, (CMT); Josh Turner, Randy Travis, *CMT Cross Country*, (CMT).

Saturday (12/23) – Ricky Skaggs, Joe Nichols, Patty Loveless, The Whites, *Grand Old Opry Live*, (GAC); Dolly Parton, *CMT Greatest Moments*, (CMT).

Monday (12/25) – Little Big Town, *Top Videos of 2006*, (GAC); Neal McCoy, *GAC Specials*, (GAC); Blake Shelton, Clint Black, Crystal Gayle, Joe Nichols, Kenny Rogers, Lee Ann Womak, *100 Greatest Duets Concert*, (CMT).

Tuesday (12/26) – LeAnn Rimes, *Top Videos of 2006*, (GAC).

Wednesday (12/27) – Keith Anderson, *Top Videos of 2006*, (GAC).

Thursday (12/28) – Sara Evans, *Top Videos of 2006*, (GAC).

Friday (12/29) – Josh Turner, *Top Videos of 2006*, (GAC).

Chart Chat

Considering the hits they've had and the albums they've sold, it's hard to believe that "Want To" is **Sugarland's** very first No. 1 single. But it is -- and

©2006 Country Aircheck™ — All rights reserved. To subscribe visit www.countryaircheck.com

CODY McCARVER

"RED FLAG"

THE FUN RECORD TO TAKE YOU AND YOUR LISTENERS INTO 2007!

KTYS/DALLAS MOVES FROM 12 TO 26 SPINS!!

<http://www.hififusion.com/video/codymccarver/rf/>

TO WATCH THE VIDEO!!!



ASPIRION
C O 5

congrats to Mercury VP **John Ettinger** and his entire crew for nabbing the top spot and giving **Jennifer Nettles** and **Kristian Bush** one heckuva Christmas present.

Milestones

We're saddened to report the early Saturday morning passing of longtime Jackson, MS radio personality **Scott Mateer**. He was 46. The cause of death has not been established; he was, however, suffering from diabetes and high blood pressure. Mateer was on the air in Jackson in the 80s and 90s. He was the morning personality, and later the PD, of Country legend WMSI/Jackson. He was also on the air at Country WJKK and Oldies WYJS. After radio he co-founded Solarfire Records.

Mateer was also co-writer, with Carson Whitsett, of Lorrie Morgan's 1989 Top 10 "Dear Me," for which they received a Grammy nomination. Mateer was also the voice of "The Preacher" on Queensryche's album "Operation: Mindcrime."

Few details were available at press time. Visitation will be Wednesday night and funeral services will be on Thursday at 11am at the First Baptist Church in Jackson, MS.

Condolences are also extended to the family of **Debi Fleischer-Robin** whose father Philipp Fleischer passed away Dec. 13 at his home in Sherman Oaks, CA. He was 86. In lieu of flowers, donations may be made to the Milton Grossman Early Education Fund c/o The Temple, 5015 Harding Road, Nashville, 37205. Fleischer-Robin can be reached at df1111@comcast.net or 851 Neartop Drive, Nashville, 37205.

Week In Review

Friday, Dec. 15: Legendary producer and Atlantic Records founder **Ahmet Ertegun** died Thursday (12/14) at age 83. The musical visionary never recovered from a head injury sustained after a fall while attending a Rolling Stones concert in New York on Oct. 29.

• Capitol/Nashville has released the entire career catalog from the late **Chris LeDoux**. He recorded 37

BIRTHDAYS

Tuesday (12/19) - Little Jimmy Dickens, Janie Fricke, Anthony Martin, Bill Mayne (bmayne@903music.com), Roger Ramsey (rogers44@sbcglobal.net), John Sebastian, Kyle Cantrell (kyle.cantrell@xmradio.com)

Wednesday (12/20) - George Briner, Melissa Pierce, Ronnie Vaughan

Thursday (12/21) - Lee Roy Parnell, Brad Warren, Doug Johnson, Nina Rossman (conferencecall@comcast.net)

Friday (12/22) - Chuck Meade (BR5-49), Marla Burns, Karen Conrad, John Shomby (jshomby@eagle97.com), Lori McKenna

Sunday (12/24) - Justin McIntosh

Monday (12/25) - Jimmy Buffett, Alecia Elliot, Barbara Mandrell, Steve Wariner, Christen Lewis (christen@audioproductions.com)

Tuesday (12/26) - Dustin Eichten, Shelley Hargis (shelley.hargis@midasrecords.com), Jan Perry Rodgers, Dave Beller

Wednesday (12/27) - Jim Beavers, David Fitzgerald

Thursday (12/28) - Marty Roe (Diamond Rio), Jonathan Fricke (studio2812@msn.com), Dan Herrington

Friday (12/29) - Jessica Andrews, Steve Casey, Ken Robold (ken.robold@umusic.com)

Saturday (12/30) - Suzy Bogguss, Cathy Woods, Dave Logan, Bo Martinovich (bo.martinovich@sonybmjg.com), Larry Neal (larryneal@clearchannel.com)




Sunday (12/31) - Sam Harrell (smagee1@sbcglobal.net), Lynette Garbonola, Memarie

Monday (1/1) - Steve Ripley (The Tractors)

Tuesday (1/2) - the late Roger Miller, Stan Byrd; Chris Hartman, Luke Lewis (luke.lewis@umusic.com), Bruce Shindler (bruce.shindler@umusic.com), Kara Wiggins

Wednesday (1/3) - Nikki Nelson

©2006 Country Aircheck™ — All rights reserved. Send news to news@countryaircheck.com

 <p>#8 MOST-PLAYED FEMALE ARTIST (MB)</p> <p>#9 MOST-PLAYED NEW ARTIST (RR/BB)</p> <p>"Tim McGraw"</p> <p>CA/MB: (8) / RR/BB: 9*</p> <p>CONVERT TO HEAVY NOW!</p>	 <p>#1 MOST-PLAYED NEW ARTIST (MB)</p> <p>#16 MOST-PLAYED SONG ("WHEREVER YOU ARE")(MB)</p> <p>#20 MOST-PLAYED COUNTRY ARTIST (RR/BB)</p> <p>"Lips Of An Angel"</p> <p>CA/MB: (29) / RR/BB: 29*</p> <p>MOST ADDED 5 WEEKS IN A ROW!</p>	<p>danielle peck</p> <p>#1 MOST-PLAYED NEW FEMALE ARTIST (MB)</p> <p>#4 MOST-PLAYED NEW ARTIST (RR/BB)</p> <p>#6 MOST-PLAYED FEMALE ARTIST (MB)</p> <p>"Isn't That Everything"</p> <p>CA/MB: (44) / RR/BB: 46*</p> <p>IMPACTING NOW!</p>
<p>THANKS COUNTRY RADIO FOR AN AMAZING 1ST YEAR!</p>		
		<p>#9 LABEL OF THE YEAR (RR/BB)</p>

albums over three decades, all of which are now available online at all digital service providers. Some of his earliest albums, recorded for his own American Cowboy Songs label, have been out of print for years.

Thursday, Dec. 14: Clear Channel KIAI/Mason City, IA PD/morning co-host **Gary Murdock** is leaving the station at year end for an as yet undisclosed PD posting with a new station in West Tennessee. CC/North Iowa OM **Tim Fleming** is accepting resumes and airchecks at timfleming@clearchannel.com. No calls.

- Cumulus WKAK/Albany, GA afternoon host **Dotty Davis** has picked up PD duties from morning host **Stew Sawyers** who will be leaving the station soon to work with John Berry. This leaves Davis looking for a “young and hungry” morning talent. If you fit the bill, send your resume and aircheck to her at dotty.davis@cumulus.com.

- Clear Channel WMAD/Madison MD/afternoon host **Boomer** is leaving the station effective Jan. 12, creating an opening PD **Jon Reilly** is looking to fill. Send your resume and aircheck to him at 2651 South Fish Hatchery Road, Madison, WI 53711.

- Warner Bros. Director/Marketing **Scott Heuerman** has left the label after 18 years. He can be reached at 615-496-7721 or heuermanscott@comcast.net.

- **Hot Air:** Look for former Hollywood Records regional **Donna Jo Passuntino** to join MCA/Nashville’s promo staff. She’ll reportedly fill the Midwest post vacant since **George Briner** left to join BNA as Dir./National Promotion a few weeks ago. Passuntino handled Hollywood’s Midwest region for eight years out of Chicago, where she’ll continue to be based.

- The RIAA has issued platinum certification for **Sugarland**’s *Enjoy The Ride*.

Wednesday, Dec. 13: New officers for the Country Music Retirement Community are President **Randy Himes** (AFTRA), Exec. VP **Tandy Rice** (Top Billing), Treasurer **Paul Corbin** and Secretary **Jeanne Pruett**. New directors include **Debbie Carroll** (MusiCares), **George Flanigen**

VIDEO ADDS

CMT

JERRY LEE LEWIS w. BRUCE SPRINGSTEEN/
Pink Cadillac (Artists First)

CMT PURE COUNTRY

No Video Adds

GAC

No Video Adds

(Deaton Flanigen), **Lon Helton** (Country Aircheck), **Les Leverett** and **Don Light** (Don Light Talent).

Tuesday, Dec. 12: Former WMZQ/Washington morning co-host **Jessica Cash** has joined **Brian Strobel** for wake-ups at WFLS/Fredericksburg, VA.

- **Kenny Chesney** is co-producing **Willie Nelson**’s next album with **Buddy Cannon**. Songs for the project come from the pens of **Kris Kristofferson**, **Dave Matthews**, **Guy Clark**, **Jimmy Buffett**, **Randy Newman** and Nelson.

- **Lon Helton**, lon@countryaircheck.com
Chuck Aly, chuck@countryaircheck.com
(615) 244-4484

©2006 Country Aircheck™ — All rights reserved. To subscribe visit www.countryaircheck.com

The EXPLOSIVE new single from:

EMERSON DRIVE

moments

Instant adds at CMT & GAC!

Thanks for a Great Start:

KSCS, KBEQ, WMIL, KMLE, KWJJ, WCOL, WSIX, WKDF, KKWF, KUZZ, KWNR,
KSON, KATM, KDRK, KRTY, KUBL, KXKC, WGH, WGTY, WIRK, WITL, WKSJ,
WPCV, WPKX, WQMX, WRBT, WRNS, WYNK, KBQI, KEGA, KIXZ, KIZN, KJUG,
KSKS, KTOM, WBCT, WBEE, WCTQ, WGGY, WGNA, WGNE, WKKT, WQHK, WSSL,
WTNR, WTQR, WVNU, WWQM, WOKQ, WCTO, WXCX, WGNE, WKSF, WNKT,
WFBE, WKCO, WNCY, WGKX, KHKI, KJY, KXKT, KIIM!

Country Aircheck:

#1 Most Added – 2 Weeks
High Debut (43)
#4 Play Increase
#5 Point Increase

..*moments*..

R&R:

#1 Most Added – 2 Weeks
High Debut 49*
#3 Play Increase



LW	TW	Artist/Title (Label)	Total Points	+/- Points	Total Plays	+/- Plays	Audience	+/- Aud	Stations	ADDS
2	1	🎵 SUGARLAND/Want To (Mercury)	14480	216	5054	39	44.361	0.87	124	0
1	2	RASCAL FLATTS/My Wish (Lyric Street)	14345	-162	4969	-79	44.103	-0.428	124	0
3	3	🎵 TIM MCGRAW/My Little Girl (Curb)	13727	16	4828	-10	41.334	-0.014	124	0
4	4	🎵 BRAD PAISLEY/She's Everything (Arista)	13104	487	4631	204	39.155	1.807	124	0
7	5	🎵 RODNEY ATKINS/Watching You (Curb) 🏆	11796	1179	4075	373	36.612	4.599	123	0
8	6	🎵 GEORGE STRAIT/It Just Comes Natural (MCA)	10803	308	3748	105	32.855	0.647	124	0
6	7	MONTGOMERY GENTRY/Some People... (Columbia)	10680	-91	3642	-81	31.489	-0.534	124	0
9	8	🎵 TAYLOR SWIFT/Tim McGraw (Big Machine)	9271	-7	3188	35	27.662	-0.124	124	0
11	9	🎵 JASON ALDEAN/Amarillo Sky (BBR)	8388	172	2994	50	24.692	0.431	124	0
10	10	LONESTAR/Mountains (BNA)	7279	-1176	2512	-414	21.532	-4.28	123	0
12	11	🎵 WRECKERS/My, Oh My (Warner Bros.)	7095	255	2386	90	19.613	0.673	124	1
15	12	🎵 JASON MICHAEL CARROLL/Alyssa Lies (Arista)	7035	541	2528	204	20.052	1.195	123	4
13	13	🎵 CRAIG MORGAN/Little Bit Of Life (BBR)	6984	161	2579	79	20.045	0.789	124	1
14	14	🎵 TRENT TOMLINSON/One Wing In The Fire (Lyric Street)	6925	362	2514	111	19.131	0.975	123	2
16	15	🎵 TRACE ADKINS/Ladies Love Country Boys (Capitol) 🏆	6355	629	2405	242	17.485	1.321	123	2
19	16	🎵 KEITH URBAN/Stupid Boy (Capitol) 🏆	6331	1446	2185	508	18.633	4.067	123	3
17	17	🎵 MARTINA MCBRIDE/Anyway (RCA) 🏆	6039	968	2004	300	17.806	2.544	123	9
18	18	🎵 JOE NICHOLS/I'll Wait For You (Universal South)	5298	280	2085	100	14.06	1.314	121	1
22	19	🎵 KELLIE PICKLER/Red High Heels (BNA)	4775	581	1651	202	13.324	1.532	124	4
21	20	🎵 DARRYL WORLEY/I Just Came Back... (903 Music)	4484	193	1595	47	11.782	0.628	121	3
23	21	🎵 PHIL VASSAR/The Woman In My Life (Arista)	4372	247	1660	70	11.725	1.237	122	0
24	22	🎵 SARA EVANS/You'll Always Be My Baby (RCA)	4350	337	1636	115	11.887	0.943	120	2
26	23	🎵 LITTLE BIG TOWN/Good As Gone (Equity)	3818	307	1342	119	10.885	0.993	118	6
27	24	🎵 GARY ALLAN/A Feelin' Like That (MCA)	3672	369	1325	121	10.523	1.023	116	6
20	25	ERIC CHURCH/Two Pink Lines (Capitol)	3618	-887	1305	-298	9.958	-2.357	120	0

©2006 Country Aircheck™ — All rights reserved. ✓=Top 5 point gainers. www.countryaircheck.com

1 Dog ★ ★ ★ ★ ★ ★ ★ ★ ★ ★ 3 HITS:

SARA EVANS
"You'll Always Be My Baby"
 R&R/BDS: 21* CA/MB: 22*
 Great research...**CONVERT NOW.**

Jake Owen
"Startin' With Me"
 R&R/BDS: 35* CA/MB: 32*
 You remember this one...**ADD IT NOW.**

Martina McBride
"Anyway"
 R&R/BDS: 18* CA/MB: 17*
 BIG song...**PUT IT IN MEDIUM NOW.**





LW	TW	Artist/Title (Label)	Total Points	+/- Points	Total Plays	+/- Plays	Audience	+/- Aud	Stations	ADDS
28	26	📶 BROOKS & DUNN/Hillbilly Deluxe (Arista)	3374	485	1359	196	8.966	1.315	118	7
29	27	📶 CLAY WALKER/"Fore She Was Mama (Curb/Asylum)	2943	155	1089	83	7.982	0.391	110	4
30	28	📶 VINCE GILL/The Reason Why (MCA)	2809	70	1011	56	7.221	0.003	112	2
31	29	📶 JACK INGRAM/Lips Of An Angel (Big Machine)	2487	461	782	173	6.926	1.453	82	18
32	30	📶 DIERKS BENTLEY/Long Trip Alone (Capitol)	2407	445	875	166	6.88	1.47	102	7
36	31	📶 BILLY CURRINGTON/Good Directions (Mercury)	1934	205	779	69	5.052	0.213	94	7
37	32	📶 JAKE OWEN/Startin' With Me (RCA)	1931	424	736	153	4.456	1.001	106	4
35	33	📶 KEITH ANDERSON/Podunk (Arista)	1762	-5	653	15	4.162	0.083	100	1
33	34	FAITH HILL/Stealing Kisses (Warner Bros.)	1692	-219	688	-80	4.048	-0.569	103	1
39	35	📶 JOSH GRACIN/I Keep Coming Back (Lyric Street)	1471	159	552	71	3.304	0.178	82	8
40	36	📶 JOSH TURNER/Me And God (MCA)	1409	149	493	58	3.889	0.428	61	5
38	37	📶 ASHLEY MONROE/I Don't... (w/Ronnie Dunn) (Columbia)	1390	37	534	26	3.192	0.019	95	2
42	38	📶 PAT GREEN/Dixie Lullaby (BNA)	1365	258	459	71	3.132	0.412	82	3
43	39	📶 BLAKE SHELTON/Don't Make Me (Warner Bros.)	1270	222	491	61	2.61	0.482	68	5
41	40	JOHN MELLENCAMP/Our Country (Universal Republic)	1136	-59	326	-2	2.802	0.157	45	3
44	41	GRETCHEN WILSON/Come To Bed (Columbia)	877	-36	347	-4	1.947	0.061	53	3
46	42	📶 TRACY LAWRENCE/Find Out... (Rocky Comfort/CO5)	867	56	376	32	2.439	0.266	40	4
Debut	43	📶 EMERSON DRIVE/Moments (Montage/Midas) ✓	857	623	354	263	1.582	1.105	73	22
47	44	📶 DANIELLE PECK/Isn't That Everything (Big Machine)	852	123	329	52	1.877	0.133	47	4
Debut	45	📶 DONOVAN CHAPMAN/House Like That (Category 5)	752	256	321	97	0.995	0.157	71	3
48	46	📶 STEVE HOLY/Come On Rain (Curb)	695	33	323	31	1.269	-0.017	49	1
Debut	47	📶 RUSHLOW HARRIS/Bagpipes Cryin' (Show Dog)	682	316	286	111	1.263	0.596	62	6
45	48	JIMMY WAYNE/That's All I'll Ever Need (Big Machine)	627	-243	244	-78	1.2	-0.381	34	2
50	49	D. MARTIN/M. MCBRIDE/Baby, It's Cold... (Capitol/RCA)	587	-2	178	-5	2.069	0.667	59	1
Debut	50	📶 BLUE COUNTY/I Get To (Curb/Asylum)	559	251	234	97	0.773	0.203	55	4

©2006 Country Aircheck™ — All rights reserved. ✓=Top 5 point gainers. www.countryaircheck.com

THANK YOU COUNTRY RADIO FOR ANOTHER AMAZING YEAR!

WE COULDN'T DO IT WITHOUT YOUR BELIEF AND SUPPORT!

HAPPY HOLIDAYS FROM YOUR FRIENDS AT



SEE YOU IN 2007!!

Aircheck Add Leaders

EMERSON DRIVE /Moments (Montage/Midas)	22
JACK INGRAM /Lips Of An Angel (Big Machine)	18
ALAN JACKSON /A Woman's Love (Arista)	10
CAROLINA RAIN /Isn't She (Equity)	10
MARTINA MCBRIDE /Anyway (RCA)	9
JOSH GRACIN /I Keep Coming Back (Lyric Street)	8
BILLY CURRINGTON /Good Directions (Mercury)	7
BROOKS & DUNN /Hillbilly Deluxe (Arista)	7
DIERKS BENTLEY /Long Trip Alone (Capitol)	7
KENNY CHESNEY /Beer In Mexico (BNA)	7

Leading Point Gainers

KEITH URBAN /Stupid Boy (Capitol)	+1446 ✓
RODNEY ATKINS /Watching You (Curb)	+1179 ✓
MARTINA MCBRIDE /Anyway (RCA)	+968 ✓
TRACE ADKINS /Ladies Love Country... (Capitol)	+629 ✓
EMERSON DRIVE /Moments (Montage/Midas)	+623 ✓
KELLIE PICKLER /Red High Heels (BNA)	+581
JASON MICHAEL CARROLL /Alyssa Lies (Arista)	+541
BRAD PAISLEY /She's Everything (Arista)	+487
BROOKS & DUNN /Hillbilly Deluxe (Arista)	+485
JACK INGRAM /Lips Of An Angel (Big Machine)	+461

Leading Spin Gainers

KEITH URBAN /Stupid Boy (Capitol)	+508
RODNEY ATKINS /Watching You (Curb)	+373
MARTINA MCBRIDE /Anyway (RCA)	+300
EMERSON DRIVE /Moments (Montage/Midas)	+263
TRACE ADKINS /Ladies Love Country... (Capitol)	+242
BRAD PAISLEY /She's Everything (Arista)	+204
JASON MICHAEL CARROLL /Alyssa Lies (Arista)	+204
KELLIE PICKLER /Red High Heels (BNA)	+202
BROOKS & DUNN /Hillbilly Deluxe (Arista)	+196
JACK INGRAM /Lips Of An Angel (Big Machine)	+173

Aircheck Top Recurrents

	Points
CARRIE UNDERWOOD /Before He Cheats (Arista)	12167
KENNY CHESNEY /You Save Me (BNA)	8645
JOSH TURNER /Would You Go With Me (MCA)	5762
HEARTLAND /I Loved Her First (Lofton Creek)	5486
RODNEY ATKINS /If You're Going... (Curb)	5464
DIERKS BENTLEY /Every Mile A Memory (Capitol)	4820
GEORGE STRAIT /Give It Away (MCA)	4179
WRECKERS /Leave The Pieces (Warner Bros.)	3916
BRAD PAISLEY /The World (Arista)	3873
STEVE HOLY /Brand New Girlfriend (Curb)	3338
JOSH TURNER /Your Man (MCA)	2843
KEITH URBAN /Once In A Lifetime (Capitol)	2745
RASCAL FLATTS /Life Is A Highway (Disney)	2723
BON JOVI w./ J. NETTLES /Who Says... (Mercury)	2479
RASCAL FLATTS /What Hurts The Most (Lyric Street)	2438
TOBY KEITH /A Little Too Late (Show Dog)	2347
EMERSON DRIVE /A Good Man (Midas)	2170
BILLY CURRINGTON /Must Be Doin'... (Mercury)	2164
JASON ALDEAN /Why (BBR)	2141
JACK INGRAM /Love You (Big Machine)	2046

Aircheck Add Dates**January 8**

ALAN JACKSON/A Woman's Love (Arista)
ALISON KRAUSS, JOHN WAITE/Missing You (Rounder)

January 16

JEFF CARSON/When You Said You Loved Me (Curb/Asylum)
LUCY ANGEL/How Long (Quarterback)

January 22

ERIC CHURCH/Guys Like Me (Capitol)
JASON MEADOWS/100% Cowboy (Baccarstick/CO5)

February 5

CARRIE UNDERWOOD/Wasted (Arista)
JERROD NIEMANN/I Love Women (My Momma Can't Stand)
 (Category 5)

February 12

LUKE BRYAN/All My Friends Say (Capitol)

©2006 Country Aircheck™ — All rights reserved. To subscribe visit www.countryaircheck.com



LUCY★ANGEL

HOW LONG?

"WOW!!! DIXIE CHICKS MEETS
 GRETCHEN WILSON MEETS SHANIA
 TWAIN! FROM ALL OF THE GIRLS
 HERE AT THE HOSPITAL
 GIVE US MORE! THANKS"

JENNIFER-- ST. LOUIS, MO RADIO LISTENER

GOING FOR ADDS ON JANUARY 16TH

QUARTERBACK RECORDS

Aircheck Activity

DONOVAN CHAPMAN/House Like That (Category 5)

Debuts at 45*; 752 points, 321 spins
 3 ADDS: **KQFC***, **KSD**, **WCTK**
 Stations with 7 or more spins: 14
 Significant spins: **KTOM** (19), **WSJR** (18),
WXBQ (15), **KJUG** (15), **WTNR** (13), **KHKI** (13),
WBEE (12), **WWYZ** (12)

STEVE HOLY/Come On Rain (Curb)

Moves 48*-46*; 695 points, 323 spins
 1 ADD: **KWJJ**
 Stations with 7 or more spins: 17
 Significant spins: **WNKT** (24), **KJUG** (18),
KTOM (15), **WIRK** (14), **KXKT** (13), **KHKI** (13)

RUSHLOW HARRIS/Bagpipes Cryin' (Show Dog)

Debuts at 47*; 682 points, 286 spins
 6 ADDS: **KBEQ**, **KQFC***, **KWNR**, **WCTQ**, **WSSL**, **WXTU**
 Stations with 7 or more spins: 16
 Significant spins: **WXBQ** (18), **WRNS** (17),
KJUG (15), **KHKI** (13)

JIMMY WAYNE/That's All I'll Ever Need (Big Machine)

Moves 45*-48; 627 points, 244 spins
 2 ADDS: **KDRK***, **WQYK***
 Stations with 7 or more spins: 15
 Significant spins: **KBEQ** (25), **WWNU** (21),
WXBQ (20), **WGTY** (19), **KTOM** (13), **WOGI** (12)

BLUE COUNTY/I Get To (Curb/Asylum)

Debuts at 50*; 559 points, 234 spins
 4 ADDS: **KIXZ**, **KSKS***, **WRNS**, **WTNR**
 Stations with 7 or more spins: 10
 Significant spins: **WSJR** (18), **KJUG** (17),
KDRK (13), **WXBQ** (12)

CARRIE UNDERWOOD/Wasted (Arista)

543 points, 168 spins
 4 ADDS: **KSCS***, **WEZL**, **WGH**, **WPCV***
 Stations with 7 or more spins: 10
 Significant spins: **KTYS** (23), **KEEY** (19),
KSD (18), **WQHK** (16), **KIXZ** (15), **WYPY** (14),
WGH (10)

MIRANDA LAMBERT/Crazy Ex-Girlfriend (Columbia)

410 points, 160 spins
 1 ADD: **WGKX***
 Stations with 7 or more spins: 11
 Significant spins: **KTYS** (20), **KEEY** (20),
WWQM (20), **WCTK** (14), **KJUG** (12), **KHKI** (10)

ALISON KRAUSS/Missing You (w/John Waite) (Rounder)

393 points, 99 spins
 1 ADD: **WBEE**
 Stations with 7 or more spins: 5
 Significant spins: **KUSS** (17), **WXBQ** (16),
KSKS (13), **WUSN** (12)

CAROLINA RAIN/Isn't She (Equity)

387 points, 148 spins
 10 ADDS: **KBEQ**, **KEEY***, **KWNR**, **KXKC***, **WBEE**,
WMIL, **WOGK**, **WRNS**, **WSSL**, **WTNR**
 Stations with 7 or more spins: 7
 Significant spins: **KEEY** (14), **KKWF** (14),
KSOP (10), **KIZN** (10)

ROCKIE LYNNE/More (Universal South)

307 points, 60 spins
 0 ADDS
 Stations with 7 or more spins: 2
 Significant spins: **KEEY** (40), **WXBQ** (16)

Aircheck Activity includes songs that rank 45-50 on this week's chart or are those that are not charted and have a minimum of 300 airplay points and have shown growth in two of the past three weeks. (indicates auto adds)*

©2006 Country Aircheck™ — All rights reserved. Send news to news@countryaircheck.com

Tracy Lawrence

"Find Out Who Your Friends Are"

SANTA'S JUST DELIVERED A HIT FOR YOUR JANUARY PLAYLIST!

Mediabase Callout:

#8 Overall • #6 w/Females
#7 Females 25-34

New Friends: KMLE, KTOM, WGH, WKHX, WYYD & KXDD!

WISHING ALL OF OUR FRIENDS A HAPPY HOLIDAY!

