

COUNTRY AIRCHECK weekly

September 15, 2025, Issue 978

Greg Beharrell: Keeping Radio Weird

When Alpha (now Connoisseur) KUPL/Portland, OR picked up YEA Media Group's syndicated **The Greg Beharrell Show** for nights last month (CAT 8/4), it became the first Country outlet for a show originating from Rock KLOS/Los Angeles that airs on almost 90 affiliates. Beharrell's quote in the KUPL press release was a tip-off to his peculiar particular brand of humor, where he noted his happiness to have "a second type of ranch in my life."



Greg Beharrell

Beharrell does his show (and interviews, as exhibited below) in "character," a practice he likens to that of comedy legends like Bob Newhart and Christopher Guest. That also extends to his self-written press releases, which feature self-deprecating

headlines like "Several Stations Add The Greg Beharrell Show. Most Stations Still Have Not." To get a glimpse into his humor, check out his interview attempt with "best friend" **Bobby Bones** [here](#), hear sample audio [here](#) and read on.

CA: What should we make of you being Canadian?

GB: I actually have dual citizenship. It wasn't until after obtaining it that I realized [dual] is not spelled with an E and doesn't involve fencing gear.

What drew you to a career in radio?

I started in radio when I was still living with my parents; my 30s were such a strange time. I feel like I've always been drawn to a career in radio. Even when I'd attend concerts with friends, I would always talk over the song intros.

What were your impressions of your first CRS earlier this year?

After attending, I can say that the Country Radio Seminar is not only one of my favorite seminars, but also uses three of my top 26 favorite letters. The best part of CRS is the lasting friendships formed; some of mine lasted for weeks after the show.

Why the interest in Country radio? Is your plan to expand in that format beyond Portland?

The relationship between country music and radio is special: both are genres with a true sense of community and fun. If I could bottle the magic of Country radio, I would, but several labs have refused to collaborate with me on that project. We have already been approached by half a dozen Country stations looking for a show that's truly unique, and we are confident they'll return to us when they can't find such a thing.

(continued on page 6)



Happen To KEYE: Triple Tigers' **Russell Dickerson** (c) celebrates No. 1 "Happen To Me" before the Minnesota Vikings' home opener against the Falcons. Pictured (l-r) are KEYE's **Pat Knight**, Dickerson, the label's **Julianna Vaughn** and KEYE's **Gregg Swedberg**.

NaSHOF: Tony Martin

A second-generation country songwriter and son of country composer Glenn Martin, Tony started in journalism as a staff writer in Chicago, Franklin, TN and as a stringer for *The Tennessean*. Writing parodies to entertain his fellow journalists turned into a career that spawned "Baby's Gotten Good At Goodbye" (George Strait), "I'll Think Of A Reason Later" (Lee Ann Womack), "Just To See You Smile" (Tim McGraw), "No Place That Far" (Sara Evans), "Third Rock from The Sun" (Joe Diffie), "You Look Good In My Shirt" (Keith Urban), "A Little More Summertime" (Jason Aldean) and "Settle For A Slowdown" (Dierks Bentley). Martin will be inducted into the Nashville Songwriters Hall of Fame (NaSHOF) Oct. 6 at Nashville's Music City Center. See interviews with NaSHOF inductees Jim Lauderdale [here](#), Don Cook [here](#) and Steve Bogard [here](#).



Tony Martin

(continued on page 3)

©2025 Country Aircheck™ — All rights reserved. Sign up free at www.countryaircheck.com. Send news to news@countryaircheck.com

TOP 30 & CLIMBING!
DYLAN SCOTT
WHAT HE'LL NEVER HAVE
#3 CURRENT OD STREAMS TO
CONVERT NOW

HEADLINING THE
EASY DOES IT
TOUR
SEPTEMBER - OCTOBER 2025

CURB RECORDS

TRIPLE
TIGERS
PRESENTS

Thank you
Country Radio!!!
[Signature]

BOTTLE ROCKETETS

SCOTTY
McCREERY

HOOTIE &
the BLOWFISH



MAX SPINS NOW!



Class Act: The CMA Foundation celebrates its 2025 Music Teachers of Excellence at Nashville’s Schermerhorn Symphony Center Wednesday (9/10). Among those pictured are **Caylee Hammack, Jon Pardi, Drake White, Charles Esten, Sarah Trahern and Nicolle Galyon.** See the full MTOE list [here](#).



“Baby’s Gotten Good At Goodbye” was the 10th [serious] song I ever wrote. The first nine were pretty forgettable. My dad gave a cassette of the demo to Dean Dillon, and George Strait just cut it. In those days, [songwriters] got a nickel for every album sold, so I thought it would help me because, as a journalist, I was having to make a big decision every month: Do I house us or do I feed us? I still worked at *The Tennessean* during my first publishing deal, where I was making \$300 a week.

“Third Rock From the Sun” was really different because it wasn’t about bedrooms and barrooms, even though it’s got both. I had no cuts at that pont and thought the publishing company was going to let me go, but

they picked up my option with that song in 1994, which was the year my hobby started paying better than my job

My favorite song is the one that’s making me money right now. Songwriters always say “the songs are like your children.” If that’s the case, I’m just happy some of them went off and earned a living. Most of my songs just want to lay around the basement and be artsy.

I don’t find performing pleasurable. I like to go in the little square room, sit in the little square chair, stare out the little square window and try to come up with this perfectly round, seamless thing that didn’t exist before, then let it go out into the world. Being in the studio, and trying to get it cut

©2025 Country Aircheck™ — All rights reserved. Sign up free at www.countryaircheck.com. Send news to news@countryaircheck.com

THE EXPLOSIVE NEW HIT

KELSEY HART

FIREWORKS

NEW THIS WEEK AT
KATM STOCKTON, WIL ST. LOUIS,
WWF NASSAU-SUFFOLK

IMPACTING NOW!

CURB
RECORDS

THANK YOU COUNTRY RADIO #1 MOST ADDED

JASON ALDEAN

*HOW FAR DOES A
GOODBYE GO*

**134 FIRST WEEK ADDS
THE BIGGEST ADD DAY OF HIS CAREER**

Music Choice

KKGO
WUSN
KSCS
KBAY
KILT
WKHX
WUBL
WMZQ
WXTU
WBWL
WKLB
WKIS
KKWF
KPNW
KMLE
WYCD
KEYY
KMNB
WFUS
WQYK
KSON
KYGO

WKKT
WSOC
WWWF
WPOC
KWJJ
KSD
WIL
KCYE
KFRG
KSOP
KNCI
WWKA
KCYE
KWNR
WDSY
WPGB
WUBE
KBEQ
WNCB
WQDR
WGAR
WCOL
WFMS

WLHK
WKDF
WSIX
WGNE
WQIK
WCTK
WGH
WPAW
WTQR
WIRK
WNOE
WKHK
WGKX
WLPF
WCKT
WWGR
WWYZ
KTEX
WSSL
WAMZ
WQNU
WBEE
WDXB

WZZK
KIIM
KWEN
KTGX
WHKO
KSKS
WGNA
WKLI
KHKI
KBQI
WIVK
WCYQ
WCTO
KXKT
KHEY
WCKN
WEZL
WTGE
WYNK
WGGY
KUZZ
KATM
WOGK

KIZN
WRBT
WKRO
KDRK
KXLY
WCOS
WWQM
WPOR
WTHT
KSSN
WAVW
WUSY
KBUL
WQMX
KTOM
WRNS
WOLF
WDRM
WRNX
KUAD
KFDI

KZSN
WBUL
WKKO
WKXC
KJUG
WGTY
WXBQ
KKIX
WQHK
WBTU
KMDL
WIOV
KRYE
WYCT
WOKQ
KHAY
WUSJ
WITL
WKML
KTTS
WNCY





THOMAS RHETT

Ain't A Bad Life

JORDAN DAVIS

AVAILABLE NOW

Going For Adds
Next Monday 9/22

GET ASSETS HERE



and being told no a whole bunch of times are different rings of hell for me. But in the room, it's magic.

New writers who have their first cut will watch the artist onstage singing it. I'll say, "Turn around, you're missing it" and [re-direct them to] 20- or 30,000 people singing something that started out with just them in a room before it existed. "Now look at it!"

Sonny Throckmorton, Curly Putnam, Whitey Shafer and Hank Cochran [his father's contemporaries] would come to the house to do these things called "guitar pulls." I always wondered why they were called that until I'd see them play. One guy would reach over and grab the neck of the guitar, pull it away and say, "Let me play you one." I thought, "That must be what the 'pull' part is." [Laughs] I'd drive around with my dad and he would stop at studios where people were cutting to go in and pitch songs. It was different, but I thought I was just hanging out with my dad.

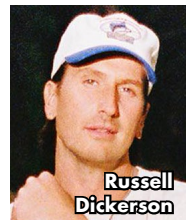
Nobody does this by themselves, so I want to make sure that the people who were there are acknowledged. The people are what you're going to miss when you leave. I imagine athletes, when their careers are over, think the field was great, and winning the games, but what they'll miss the most is the locker room. And I love this town. I came here in the back of a station wagon in the third grade, and I owe everything to it. I'm a fortunate son.

—Phyllis Stark

Chart Chat

Congratulations to **Russell Dickerson**, **Raffaella Braun** and the **Triple Tigers** promotion team on taking "Happen To Me" to No. 1. This is Dickerson's sixth No. 1. Songwriters are **Chris LaCorte**, **Jessie Jo Dillon**, **Chase McGill**, **Robert Hazard** and Dickerson.

Kudos to **Lee Adams** and the **Broken Bow** crew on scoring 127 adds for "How Far Does A Goodbye Go" by Jason Aldean to top this week's CA/MB Add Board. Not only does this break Aldean's previous best add week of 113 for "Burnin' It Down" (July 2014), it also becomes the biggest add week in the history of the imprint, topping the 123 set by Lainey Wilson with "Somewhere Over Laredo" earlier this year.



Russell Dickerson

News & Notes

ASCAP has named former What If Media Group Chief Technology Officer (CTO)/Head of Product **John Pershing** SVP/CTO, effective Sept. 22. He is based in New York.

Writer, producer and actor **Lily Clayton Hansen** joined **PLA Media** in Nashville as a Public Relations Specialist, on a project basis, after nearly 10 years of running custom publishing house **Word of Mouth Conversations**. Reach her [here](#).

Garth Brooks will headline **BST Hyde Park** in London June 27, 2026. Tickets go on sale Sept. 18 [here](#).

Ty Herndon will release memoir *What Mattered Most* March 31, 2026 via William Morrow imprint Dey Street Books. In it, he shares details about his struggles with addiction and mental health. Pre-order [here](#).

Nashville music producer **Tony Mantor**, host and producer of the year-old *Almost Live ... Nashville* podcast, has signed a worldwide distribution deal with audio and video network **Bleav**.

Pedigree Foundation will host its annual "Dogtober" Writers Round Oct. 1 at 7:30pm at Nashville's 3rd and Lindsley. Performers include **Jamie O'Neal**, **Jamie Floyd** and **Carolyn Dawn Johnson**, with proceeds benefitting the foundation's dog rescue disaster relief efforts. Tickets [here](#).

CAA's **Rod Essig** is among the investors in new canned cocktail brand **Nashville Cats Vodka Cocktail**. The name pays tribute to the Music City studio musicians of the '60s and '70s.

Bidding is open through Sept. 19 for **Julien's Auctions** and the **Grand Ole Opry's** "Live In London Fan Experience" package for the Opry's Sept. 26 show at Royal Albert Hall. Register to bid [here](#). Auction proceeds benefit the **Opry Trust**.

Greg Beharrell: Keeping Radio Weird

(continued from page 1)

You've been on KUPL just about a month now. How has the response been from listeners? How are you helping keep that market "weird?"

I receive 20 to 30 calls from Portland every night. The phone rings so much you'd think it was Sizzle Pie on a Friday. I wouldn't say my show is weird, mostly because enough people already do. The country audience craves fun, special and unique, and that's what they'll find with my show.

How would you describe your show for those who haven't heard it?

My show is best described in 15 words and, unfortunately, I have now used them.

Is 88 still your current number of affiliates?

I'm proud to say we are now at 89.5 affiliates. Fun fact: I syndicated myself for a few years before partnering with the wonderful Yea Media Group. Not as fun fact: rubber bands last longer if refrigerated.

How do you try to make your show different from other syndicated options?

When I'm on air, I'll say things like "my show is unique," or, like, I'll just quickly say the word "unique" in the middle of a sentence with hopes of creating a subconscious parallel.

What have been some of your strangest or most memorable listener interactions over the years?

Oh ... the listeners are supposed to be the strange ones?

How do you integrate AI into your workflow, and has it made the job of assembling a syndicated show any easier?

For years, I assumed the advent of AI would finally mean helper robots a la Rocky 4. You can imagine my dismay when this charming reality did not come to fruition. Since then, my show has been AI free. As for workflow, my pace is more of a work-ooze.

You've said your show is "hosted by Greg Beharrell, produced by Greg Beharrell, with voiceover by Greg Beharrell, and trash collection by Greg Beharrell." Are you truly a one-man operation?

I am the only employee on my show, and I still can't stand my co-worker.

Is there a particular audience sensibility you need to cater to knowing most of your audience is listening to the show at night?



OFF THE RECORD

Big Machine's **Chase McDaniel** shares the stories behind a few of the tracks off his debut album, *Lost Ones*:

"Die Trying" is a story about meeting someone that makes you want to save your life. It's about loving someone so much you pray heaven's real, when before you had nothing to live for. Nobody could save me but me – although, I did have someone who inspired me to do the work to fix myself. This was the first track written for the album, and I knew immediately when my producer, Lindsay Rimes, put the massive electric guitars on the chorus that it was something special. I spent a couple summers with my dad growing up fighting over the radio dial. My favorite was Randy Travis, his was Creed. I feel like this song set the sonic tone for the record to pay tribute to my father and the good times I got to spend with him during his sobriety.



CHASE MCDANIEL

"Burned Down Heaven" was written by accident. I went back home to visit my grandparents, and my former preacher of a papaw said that he'd "turn down heaven" for my mamaw. Meaning if he had to, he'd give it up just to be with her. Sweet, right? I wrote that down and tried to write a love song called "Turn Down Heaven," but my subconscious had other plans. I accidentally sang the phrase "Burned Down Heaven" instead when I was fiddling with my guitar. I thought I was going to get struck by lightning. "What could be worse than burning heaven to the ground?" I thought. And I realized I'd felt that way my whole life. I carry such a heavy conscience and worry about all the people and things I've done wrong before I got my life together. I brought it to Lindsay Rimes and Jon Nite the next morning thinking they'd laugh or yell at me for such a heretical song idea. Turns out, I wasn't the only one who had felt like I'd burned heaven down before. It felt good to get some things off my chest.

"What I Didn't Have" is an autobiographical story about being raised by my grandparents. My dad was a drug addict, we were poor and mamaw and papaw took me in. It was for the best. There's a line in the song that says, "I didn't talk bad about my dad, 'cause he was still their son," and that's about as real as it gets. We were each other's second chance. I watched them grieve while he was still here, and we've all grieved exponentially since he passed. Through it all, they somehow still reserved space to love me. It is without question my greatest blessing in life to have had them in my life. This song is dedicated to them.

"Lost Ones" is the centerpiece message of the album and the name of our new fan club. It's about turning pain into purpose. Most of my life I have had my struggles with severe mental health disorders. It's in managing and overcoming those debilitating parts of me that I've realized how strong I am and how important it is to fight for others who face similar hardships. "Lost Ones" is about climbing your way out of hell until you can reach for a light, and then offering a hand back down to pull others up with you.

Actually, my show is on every daypart. I'm on in mornings, middays, afternoons, as well as evenings across North America, and during the witching hour in lower Luxembourg.

Anything else I didn't ask that you'd like to include?

If you could include some ampersands, I'd appreciate it. They don't get enough work.
 –Phyllis "&&" Stark **CAC**

©2025 Country Aircheck™ – All rights reserved. Sign up free at www.countryaircheck.com. Send news to news@countryaircheck.com

JASON ALDEAN
HOW FAR DOES A GOODBYE GO
BIGGEST ADD DATE OF JASON'S CAREER!
THANK YOU COUNTRY RADIO!
#1 MOST ADDED WITH 134 ADDS!

BBR BBR BMG

August 2025 PPM Scoreboard

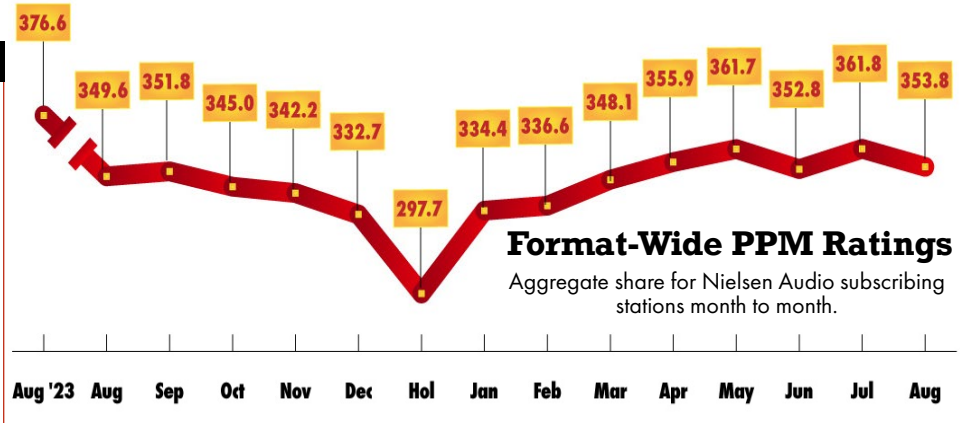
The Nielsen PPM August 2025 Survey (7/24-8/20) saw Country slip 2.2% on a same-station basis from the July survey, to 353.8 total shares. That's up 1.2% from last August. Cume edged up 0.9% from 23.7 million to 23.9m; that is a 9.6% increase from the previous year. **WCTK/Providence** led the format with an 11.4 share, not only its best since August 2020, but the largest for any station in the

format since **WQIK/Jacksonville** had an 11.5 in September 2022. **KPLX/Dallas** took the cume crown for the second time this year. Legend: A "+" indicates a Classic Country outlet; a "^" designates co-owned Country stations in the metro; a "t" indicates a tie; and a "*" indicates a station that is a recent subscriber for which ratings were not currently available. Ranks are among subscribers.

| Aug PPM Top 10 | | | |
|----------------|-----------|------------------------|-------------|
| SHARE | | | |
| JUL | AUG | Station | Share |
| | | WCTK/Providence | 11.4 |
| 2 | 1 | WWYZ/Hartford | 10.0 |
| 1 | 2 | WUBE/Cincinnati | 8.6 |
| 5 | 3 | WGAR/Cleveland | 7.8 |
| 6 | 4t | WCOL/Columbus, OH | 7.8 |
| 3 | 4t | WQDR/Raleigh | 7.5 |
| 4 | 6 | KSOP/Salt Lake City | 7.1 |
| 8t | 7 | WMIL/Milwaukee | 6.8 |
| -- | 8 | WLHK/Indianapolis | 6.7 |
| -- | 9 | KCYY/San Antonio | 6.6 |
| -- | 10 | | |

| Station/City | 6+ SHARE (RANK) | | CUME | | Station/City | 6+ SHARE (RANK) | | CUME | |
|---------------------------|-----------------|-----------|---------|---------|-------------------------------|-----------------|-----------|---------|---------|
| | Jul 25 | Aug 25 | Jul 25 | Aug 25 | | Jul 25 | Aug 25 | Jul 25 | Aug 25 |
| WKHX/Atlanta | 2.9 (14t) | 3.0 (13) | 376,100 | 319,000 | KEEY/Minneapolis | 5.5 (7) | 5.1 (8) | 497,000 | 488,000 |
| WUBL/Atlanta | 3.6 (10) | 2.8 (14) | 429,000 | 364,100 | KMNB/Minneapolis | 2.0 (15t) | 2.1 (16t) | 290,600 | 285,900 |
| KASE/Austin^ | 4.8 (4) | 3.9 (7t) | 207,000 | 230,500 | KLCI/Minneapolis + | 1.4 (20) | 1.5 (21) | 117,500 | 127,000 |
| KVET/Austin^ | 4.2 (6) | 4.6 (4) | 241,300 | 282,000 | WKDF/Nashville^ | 2.6 (14t) | 3.2 (14) | 134,500 | 141,300 |
| KKMJ-HD3/Austin + | 1.9 (18) | 1.7 (19) | 32,400 | 34,700 | WNFN/Nashville + | 2.6 (14t) | 2.5 (16t) | 80,100 | 80,400 |
| WPDC/Baltimore | 6.5 (2t) | 5.6 (4t) | 268,800 | 211,200 | WSIX/Nashville | 6.8 (3) | 5.2 (7t) | 174,500 | 183,400 |
| WKLB/Boston | 3.2 (14) | 3.3 (13) | 353,500 | 373,400 | WSM-FM/Nashville^ | 4.1 (12) | 3.4 (12t) | 154,600 | 124,200 |
| WBWL/Boston | 2.5 (17t) | 2.1 (18) | 302,200 | 261,300 | WWWF/Nassau-Suffolk | 2.2 (13t) | 1.9 (16t) | 146,800 | 130,100 |
| WKKT/Charlotte | 5.0 (8t) | 4.8 (10) | 315,100 | 294,200 | WKMK/New York (Monmouth) | 0.8 (25) | 0.7 (26) | 175,100 | 219,100 |
| WSOC/Charlotte | 7.4 (2) | 6.4 (4) | 389,500 | 385,200 | WGH/Norfolk | 3.7 (10) | 4.5 (9) | 138,600 | 132,000 |
| WUSN/Chicago | 4.5 (6) | 4.1 (7) | 904,400 | 860,800 | WUSH/Norfolk | 5.3 (6) | 5.1 (6) | 131,100 | 119,800 |
| WCCQ/Chicago^ | 0.3 (37t) | 0.4 (33t) | 119,700 | 138,400 | WWKA/Orlando | 5.8 (6) | 6.5 (4) | 165,700 | 215,900 |
| WXL/Chicago^ | 0.4 (33t) | 0.3 (37t) | 132,800 | 127,900 | WXTU/Philadelphia | 4.2 (9) | 4.3 (8) | 597,900 | 583,400 |
| WUBE/Cincinnati^ | 8.0 (3) | 8.6 (3) | 316,300 | 303,100 | KMLE/Phoenix | 3.7 (7t) | 3.3 (12) | 428,300 | 497,100 |
| WNFN/Cincinnati | 2.3 (16t) | 1.9 (18t) | 131,100 | 123,000 | KNIX/Phoenix | 4.3 (4) | 4.0 (6) | 464,200 | 437,500 |
| WYGY/Cincinnati^ | 2.4 (15) | 2.4 (15) | 111,500 | 111,600 | WDSY/Pittsburgh | 4.8 (7) | 4.2 (7) | 277,600 | 247,000 |
| WGAR/Cleveland | 7.9 (4) | 7.8 (3) | 335,300 | 316,000 | WPGB/Pittsburgh | 3.3 (10) | 2.4 (12t) | 199,900 | 167,700 |
| WQMG/Cleveland (Akron) | 2.1 (15) | 2.0 (15) | 112,100 | 105,800 | KUPL/Portland | 4.1 (9t) | 3.8 (10) | 250,400 | 211,100 |
| WCOL/Columbus, OH | 8.6 (1) | 7.8 (4) | 335,100 | 346,700 | KWJJ/Portland | 3.5 (11) | 3.2 (14t) | 218,800 | 208,200 |
| WJKR/Columbus, OH + | 2.1 (13t) | 2.4 (13) | 102,600 | 114,900 | WCTK/Providence | 9.8 (1t) | 11.4 (1) | 283,600 | 298,600 |
| KPLX/Dallas^ | 5.4 (1) | 5.4 (2) | 866,800 | 930,900 | WNCB/Raleigh | 3.8 (11) | 1.9 (15) | 158,600 | 125,100 |
| KSCS/Dallas^ | 5.2 (2) | 5.0 (4) | 669,200 | 771,400 | WQDR/Raleigh | 8.4 (2) | 7.5 (4) | 247,400 | 240,800 |
| KYGO/Denver | 6.2 (2) | 5.7 (2) | 308,500 | 311,500 | KFRG/Riverside | 2.9 (5) | 3.0 (4) | 210,700 | 228,700 |
| KWBL/Denver | 3.6 (12t) | 3.2 (14) | 189,800 | 208,900 | KNCI/Sacramento | 5.2 (4) | 4.4 (5) | 252,100 | 242,700 |
| KQKS-HD2/Denver + | 0.8 (27t) | 0.7 (28) | 69,800 | 67,700 | KNTY/Sacramento + | 1.8 (19t) | 2.0 (17) | 83,700 | 83,800 |
| WYCD/Detroit | 5.3 (5) | 5.0 (5) | 506,700 | 534,800 | KYRV-HD2/Sacramento | 0.6 (25) | 0.6 (24t) | 37,400 | 48,200 |
| WPAW/Greensboro | 5.6 (6) | 4.6 (7) | 174,100 | 184,000 | KNAH/Salt Lake City | 2.3 (18) | 3.1 (14) | 150,200 | 175,600 |
| WTQR/Greensboro | 4.6 (7) | 5.3 (6) | 181,800 | 167,600 | KSOP/Salt Lake City | 6.8 (1) | 7.1 (2) | 185,400 | 199,300 |
| WWYZ/Hartford | 10.0 (2) | 10.0 (2) | 188,000 | 190,900 | KUBL/Salt Lake City | 5.1 (7) | 4.3 (9) | 261,200 | 254,900 |
| KILT/Houston | 2.9 (16t) | 3.2 (14) | 648,800 | 760,200 | KAJA/San Antonio | 5.2 (6) | 5.9 (3) | 299,100 | 344,600 |
| KKBQ/Houston | 5.2 (5) | 5.5 (4) | 860,900 | 869,700 | KCYY/San Antonio^ | 6.3 (3) | 6.6 (2) | 403,500 | 408,000 |
| WFMS/Indianapolis | 4.5 (10) | 5.1 (8t) | 204,300 | 220,500 | KKYX-AM/San Antonio^+ | 0.6 (25t) | 0.6 (28) | 66,600 | 70,600 |
| WLHK/Indianapolis | 5.8 (6t) | 6.7 (5) | 209,100 | 201,600 | KRPT/San Antonio^+ | 0.6 (25t) | 0.4 (29t) | 73,600 | 64,400 |
| WGNE/Jacksonville | 3.8 (11) | 4.1 (10) | 147,400 | 174,400 | KSON/San Diego | 4.3 (7t) | 5.4 (6) | 248,500 | 252,100 |
| WQIK/Jacksonville | 4.7 (8) | 5.6 (6) | 160,300 | 180,100 | KBAY/San Francisco (San Jose) | 1.3 (24) | 1.3 (22t) | 236,600 | 241,300 |
| KBEQ/Kansas City^ | 3.2 (13t) | 3.0 (11t) | 186,900 | 158,900 | KBAY/San Jose | 2.7 (12t) | 2.5 (12) | 134,500 | 122,700 |
| KFKF/Kansas City^ | 3.3 (10t) | 3.0 (11t) | 185,500 | 172,700 | KPLZ/Seattle + | 3.0 (16t) | 3.4 (12) | 257,500 | 239,900 |
| WDAF/Kansas City | 3.3 (10t) | 3.5 (10) | 204,900 | 200,300 | KPNW/Seattle | 2.6 (19) | 2.3 (19) | 212,200 | 192,000 |
| KCYE/Las Vegas | 2.6 (12t) | 2.0 (18t) | 135,900 | 121,200 | KKWF/Seattle | 3.1 (14t) | 3.2 (14) | 285,400 | 271,300 |
| KWNR/Las Vegas | 4.1 (5) | 3.1 (8) | 161,200 | 178,000 | KSD/St. Louis | 5.0 (8) | 5.2 (5t) | 345,100 | 364,300 |
| KKGO/Los Angeles | 2.5 (17) | 2.2 (17t) | 641,200 | 698,700 | WIL/St. Louis | 4.4 (11) | 4.1 (13) | 324,100 | 316,300 |
| WLFP/Memphis | 3.8 (6t) | 4.6 (6) | 126,500 | 138,100 | WFUS/Tampa | 5.3 (3t) | 4.8 (6t) | 366,800 | 381,300 |
| WKIS/Miami | 3.2 (13) | 3.4 (10) | 317,900 | 339,100 | WQYK/Tampa | 5.0 (5t) | 4.5 (8) | 334,400 | 299,800 |
| WKMK/Middlesex (Monmouth) | 1.8 (15t) | 1.3 (15t) | 67,800 | 69,800 | WMZQ/Washington | 3.0 (13t) | 3.5 (8) | 293,200 | 296,600 |
| WMIL/Milwaukee | 6.3 (3) | 6.8 (3) | 266,800 | 279,400 | WIRK/West Palm Beach | 3.7 (6) | 4.0 (6) | 81,600 | 85,200 |

| Aug PPM Top 10 | | | |
|----------------|-----------|--------------------|----------------|
| CUME | | | |
| JUL | AUG | Station | Cume |
| 2 | 1 | KPLX/Dallas | 930,900 |
| 3 | 2 | KKBQ/Houston | 869,700 |
| 1 | 3 | WUSN/Chicago | 860,800 |
| 4 | 4 | KSCS/Dallas | 771,400 |
| 5 | 5 | KILT/Houston | 760,200 |
| 6 | 6 | KKGO/Los Angeles | 698,700 |
| 7 | 7 | WXTU/Philadelphia | 583,400 |
| 8 | 8 | WYCD/Detroit | 534,800 |
| -- | 9 | KMLE/Phoenix | 497,100 |
| 9 | 10 | KEEY/Minneapolis | 488,000 |



AVAILABLE JOBS

Details on specific postings can be found searching call letters or company names in the archives at www.countryaircheck.com. Submit available jobs here.

MIDWEST

Morning Co-Host

Federated **WBYT/South Bend, IN** is seeking a morning co-host. Résumé, aircheck and production samples to PD **Jesse Garcia** [here](#).

Operations Manager

Keystone **KICM/Ardmore, OK** is seeking an OM who will work directly with the owners and the sales team, and oversee all aspects of the station's programming. Send résumés [here](#).

Director/Operations

Meredith **KSOM/Atlantic, IA** is looking for a full-time Dir./Operations who can also handle an air shift. Send airchecks, résumés and references to VP/GM William Saluk [here](#).

Brand Manager

Mid-West Family **WRTB/Rockford, IL** is seeking a Brand Mgr. Find the job description [here](#). Apply to sister Rock WXRK Brand Mgr. **Lou Lombardo** [here](#).

Morning Host

Trending Media **KXIA/Marshalltown, IA** is seeking a morning host. The position includes promotion duties, and comes with an opportunity to grow into the PD role. Send resume, references and on-air demo [here](#).

Morning Co-host

Midwest **WNKY/Appleton-Green Bay** Brand Mgr. **Dan Stone** is seeking a morning co-host. Send audio, resume and references to him [here](#).

Asst. Brand Manager/Afternoon Host

Midwest **KVOX/Fargo, ND** is seeking an afternoon host and Asst. Brand Mgr. Send aircheck, resume and a "frog-worthy fun fact" to OM **Corey "Zero" Schaffer** [here](#).

Promotions Coordinator

Hubbard **WIL/St. Louis** is seeking a full-time Coord./Promotions. Find more details and apply [here](#).

Morning Co-Host

SummitMedia EVP/Programming **Randy Chase** is seeking a morning co-host for **KTTS/Springfield, MO**. Email resume and aircheck to Chase [here](#). See the full job posting [here](#).

Morning Co-Host

Townsquare **WKDQ/Evansville, IN** is seeking a morning show co-host. Apply [here](#).

updated this week

Production Director

Steel City Media is seeking a full-time Dir./Production for its four-station Kansas City cluster, including **KBEQ** and **KFKF**. See the job posting and apply [here](#).

NORTHEAST

Account Executive

iHeartMedia is seeking an AE for its five-station Wilmington, DC cluster, including **WSDS**. Apply [here](#) by May 27.

Brand Manager

Townsquare **WOKQ/Portsmouth, NH** is seeking a Brand Mgr. Apply [here](#).

Morning Co-Host

Townsquare **WOKQ/Manchester, NH** Reg. Dir./Content **Herb Ivy** is seeking a morning co-host. Reach him [here](#).

SOUTHEAST

Air Talent and Board Ops

Bristol Broadcasting/Johnson City, TN, which includes Country **WXBQ**, is looking for full-time and part-time air talent and board ops. Résumés and airchecks to PD **Nikki Thomas** [here](#).

Promotions Dir.

Holston Valley Broadcasting/Tri-Cities TN, VA is looking for a Promotions Dir. for AC WTFM, Classic Hits WVEK and Rock WRZK. Résumé and social media samples [here](#).

APD/MD/Afternoon Host

Southern Stone **WKRO/Daytona Beach** has an APD/MD/airstaff opening. Résumés to VP/Programming **Jonathan Wiley** (DJ Tremble) [here](#).

APD

Listen Up Y'all Media/Natchez, MS Group PD **Kidd Conley** is looking for a five-station APD for the cluster that includes **WQNZ**. Résumés, cover letters, production demos and airchecks [here](#).

Morning Co-Host

Saga Classic Country **WSIG/Harrisonburg, VA** is seeking a morning co-host. Email aircheck audio and resume to OM **Brandy Lindsey** [here](#).

PD/Air Personality

Consulting firm **RWPC, Inc.** is seeking candidates for a PD/air personality opening at a client station in the Southeast. Send materials to RWPC Pres. **Scott Huskey** [here](#).

VP/Events & Promotions

SummitMedia is seeking a Birmingham-based VP/Events & Promotions to support and lead its promotions and events teams nationally, and assist on-site with major events. Apply [here](#).

Morning Co-host/Promotions Dir.

Hoxeng Trust **WYCT/Pensacola, FL** is seeking a morning co-host and Dir./Promotions. Send materials to OM **Kevin King** [here](#).

Morning Co-Host

Kensington Digital **WECB/Dothan, AL** is seeking a morning co-host. Send airchecks and résumés to Dir./Operations **Kris Lake** [here](#).

Digital Content Manager

SummitMedia is recruiting for a newly created Digital Content Manager position, based in Birmingham. See the job posting and apply [here](#).

PD/Afternoon Host

Saga **KDXY/Jonesboro** is seeking a PD/afternoon host. Send résumé, aircheck, and "anything else that'll make your case" [here](#).

Programming & Production Assistant

Stonecom/Cookeville, TN is seeking to fill a Programming & Production Assistant role for the eight-station cluster, which includes **WKXD** and Classic Country **WUCH**. Send resume, aircheck, a newscast, a commercial sample and a writing sample to VP/Programming **Marcia Lee Lorange** [here](#).

Air Personality/Social Media Coord.

Forever **WOGY/Jackson, TN** is seeking an on-air host/Social Media Coordinator. Apply [here](#).

Air Personality

Bristol **WXBQ/Johnson City, TN** is seeking a full-time night host, and potentially some part-time positions. Send resume, aircheck and "any other details that show us what you're all about" [here](#).

Air Personality

Beasley Top 40 **WXKB/Fort Myers, FL** is seeking a full-time air personality "who can excel in any daypart." The station's programming includes a mix of country artists. Apply [here](#).

Morning Host

Blakene **WBBN/Laurel-Hattiesburg, MS** OM **Tom Colt** is seeking a morning host. Send résumés and airchecks [here](#).

Morning Show Producer

Cumulus **WKDF/Nashville** has an opening for Morning Show Producer to join the *Jesse James Show* (CAT 6/5). See full post [here](#).

Dir./Branding & Programming/On-Air Talent

Cox/Athens, GA is seeking a morning co-host for **WNGC** and Director of Branding & Programming for Top 40 WPUP & News-Talk WGAU. Apply [here](#).

Morning Co-host

Audacy **WUSY/Chattanooga** is seeking a morning co-host to join **Ken Hicks**. Job post [here](#).

Morning Co-Host

WUSJ/Jackson, MS is seeking a morning show co-host. Send résumé and aircheck to **Jan Michaels** or **Kelly Crocker**.

SOUTHWEST

Morning Host

Stephens Media Group **KKAJ/Ardmore, OK** is seeking a morning host. Résumé, aircheck and references to SVP/Programming **Bob Thornton** [here](#).

Morning Co-host

Cox **KWEN/Tulsa** is seeking a morning co-host. Apply [here](#) with an audio or video link.

Program Director

iHeartMedia **KAJA/San Antonio** has an opening for PD. Requirements include five years of high-level radio experience. See full posting [here](#).

General Manager

HEH Communications is seeking a GM for its Huntsville, TX stations, Country KSAM and Classic Hits KHYL. Send résumé and cover letter [here](#). Find the full job posting [here](#).

Afternoon Host

Whitehead **KTTX/Bryan-College Station, TX** is looking for an afternoon personality with on-air, production and music scheduling experience to join its team. Email résumé [here](#).

WEST

Air Personality

Owens **KUZZ/Bakersfield** is looking for future part-time and full-time talent. Send résumés and airchecks to PD **Brent Michaels** [here](#). No phone calls.

Morning Co-host/Dir. of Promotions

Stephens Media/Yakima, WA is seeking a Dir./Promotions and **KXDD** morning co-host. Send résumé, aircheck, imaging and social media samples to OM **Justin Henriksen** [here](#).

Air Personality

Mt. Wilson **KKGO/Los Angeles** is looking for a full-time "entertainer" to add to the staff in an unspecified daypart. Send aircheck and resume to consultant Joel Raab [here](#).

Air Personality

Bonneville **KNCI/Sacramento** is looking for someone to join the Pat & Cody morning show. Full posting [here](#).

OTHER

Junior Agent

Kincaid Entertainment Agency is seeking a full-time Junior Agent to join the team. Applicants should have at least a year of experience in the music industry. Submit resumes [here](#).

Social Media Specialist

Country Thunder Music Festivals is seeking a full-time, Nashville-based Social Media Specialist to manage social content and analytics for *Country Thunder*, *Big Valley Jamboree* and *Rockin' Thunder*. Send résumé, creative portfolio and examples of social content success [here](#).

Management Coordinator

Nashville-based management company **Hill Entertainment Group** is recruiting for a Management Coord. Send resumes [here](#).

Marketing Manager

Activated Events is seeking a remote Mgr./Marketing to develop and execute marketing campaigns for the company's live music festivals. Submit résumé, cover letter and examples of social media/email campaigns with measurable results [here](#).

Air Personality/Imaging Talent

A new venture still under wraps is seeking "remarkable" air talent and imaging talent in the Country, Classic Hits, Classic Rock and News genres. Send audio samples and resumes in confidence [here](#).

SEEKING JOBS

Click [here](#) to add or update your information

• **Scott Aber**
Former KGWY/Gillette, WY; KKAJ/Ardmore, OK and KPXX/Las Cruces, NM morning host
sjaber93@gmail.com • 970-712-0249

• **Brandon Adams**
Former WYCM/Lafayette, IN PD/midday host
badamsontheair@gmail.com

• **Codie Allen**
Former WDAF/Kansas City APD/MD/morning co-host
Codie.allen@gmail.com

• **Liza Anderson**
Former Music Row Project & Subscription Mgr. & Writer
lizaand12@gmail.com

• **Donnie "Hollywood" Andrews**
Former WKXD/Cookeville, TN PD/Mornings
hollywoodandrews939@gmail.com

• **Phil Becker**
Former Alpha Media EVP/Content
PhilBeckerMedia@gmail.com

• **Lisa Berg**
Former Music Row magazine News Editor and Mediabase airplay researcher
oprprat@comcast.net

• **Alexis Bingham**
Former ACM Events Coord.
abingham259@gmail.com

• **Jill Brunett**
Former Mercury/Southwest Regional
jjbrun4882@gmail.com

• **Sarah Marie Burke**
Former MCA Mgr./A&R
sarmarburke@gmail.com

• **Jake Byron**
Former KUPL/Portland air personality
jakebyronmedia@gmail.com

• **Mica Cadena**
Former WRNS/Greenville, NC afternoon host
micacadena@gmail.com

• **Lori Christian**
Former EVP/Marketing UMG/Nashville
lgeneschristian@gmail.com

• **Cody Clark**
Former KRST/Albuquerque APD/afternoon host
codyclark947@gmail.com

• **Sean Dolan**
Former Mercury Promotion Coord.
sdolan2022@gmail.com

• **Leah Ducey**
Former MCA Sr. Dir./Digital Marketing
Leah.ducey@gmail.com

• **Danny Dwyer**
Former KUPL/Portland MD/air personality
DJDanny24@gmail.com

• **Bill Gamble**
Former Mid-West Family/South Bend, IN VP/Content
gamblechicago@yahoo.com

• **Sally Green**
Former Mercury/West Coast Regional
greenesa927@gmail.com

• **Justin Hammons**
Former APD/Promotions Dir./Morning Host KXIA/Marshalltown, IA
hammons45@hotmail.com

• **Michelle Hall**
Former MCA Sr. Dir./Marketing & Creative Services
Michelle.rose.hall@gmail.com

• **Alek Halverson**
Former KAJA/San Antonio PD and KAJA & KASE/Austin afternoon personality
alekhalverson22@gmail.com

• **Amanda Hensel**
Former Taste Of Country Editor-In-Chief
ahensel@gmail.com

• **Bridget Herrmann**
Former Red Street Regional Dir./Country Promotion
bridget.herrmann@gmail.com

• **Katy Huffman**
Former MCA Dir./Strategic Marketing
katy.huffman@gmail.com

• **Binoj Jacob**
Former The Big Time With Whitney Allen Associate Producer
mynameisbinoj@gmail.com
(954)-865-8065

• **Jeff "Shotgun" Jaxon**
Former WDAF/Kansas City afternoon host
ShotgunJaxon@gmail.com

• **Luke Jensen**
Outgoing Monument VP/Promotion
luke.jensen@sonymusic.com

• **Greg Johnson**
Former Corus Regional Country Programmer
gjohnsonmedia@gmail.com

• **Chris Jones**
Former MCA Mgr./E-Commerce & Retail
gwyn20@gmail.com

• **Tommy Jordan**
Former WMLL/Manchester, NH morning co-host
tommyjordan@tommyjordan.net

• **Nick Kaper**
Former UMGN Dir./Promotion & Radio Marketing
kapernp@gmail.com

• **Claire Karliak**
Former Monument Mgr./Digital Marketing & Streaming
karliak9916@gmail.com

• **Caleb Karnoutsos**
Former WBYZ/Baxley, GA PD
calebkarnoutsos22@gmail.com

• **Gary Keffer**
Former MCA VP/Strategic Marketing
gdkaffer@gmail.com

• **Bethany Kent**
Former Audacy Dir./Music Initiatives
Bethany.kent@gmail.com

• **Jesse Knutson**
Former ACM Dir./Publicity & Media Relations
jessedknutson@gmail.com

• **Mike Krinik**
Former EMI Nashville/Northeast Regional
mikekrinik@gmail.com

• **Andrew "Latty" Latimer**
Former WGKX/Memphis morning co-host
aclatimer@gmail.com
(901) 515-7327

• **Alyssa Logan**
Former MCA Dir./Marketing & Project Mgmt.
alysaskatherinelogan@gmail.com

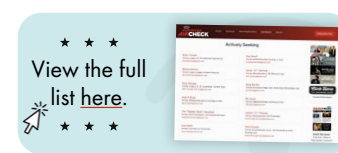
• **Hannah Loomis**
Former Monument Coord./Marketing & Promotion
hannahgraceloomis@gmail.com

• **Leigh Malleus**
Former MCA VP/Media Marketing
LP.Malleus@gmail.com

• **Lisa Manning**
Former WKDF/Nashville midday host
lisamanningvo@aol.com

• **Ray Mariner**
Former Warner/WEA Mgr./Regional Radio & Streaming
RayMarATL@gmail.com

• **Chance Maxwell**
Former MCA Dir./Streaming Marketing
chancemaxwell@gmail.com



• **Gordon Mays**
Former Milwaukee Radio Alliance Dir./Programming and afternoon host
gordon.mays@gmail.com

• **Kaitlin Mays**
Former MCA Mgr./Digital Marketing
kaitlinamays@gmail.com

• **Alex Mazza**
Former MCA Marketing Project Coord.
agdmazza@gmail.com

• **Mike McKenzie**
Former Summit/Birmingham Mgr./Creative Content & Production
mikemckenzieeradio@yahoo.com

• **Leigh Morrison**
Former UMG/Nashville Mgr./Marketing & Artist Development
leigh.morrison072@gmail.com

• **Karen Naff**
Former MCA VP/Creative Services
kgnaff@gmail.com

• **Alexa Neo**
Former WWWF/Nassau-Suffolk midday host
neoalexa1@gmail.com

• **Glenn Noblit**
Former Monument Dir./Regional Promotion
GPNoblit@icloud.com

• **Naomi Onsrì**
Former CMT Coord./Music & Talent
Naomi.Onsrì@gmail.com

• **Russ Penuell**
Former Country Aircheck Radio Editor
djrussepp@yahoo.com

• **Amberly Quaintance**
Former Beasley/Las Vegas Dir./Special Events & Partnerships
amberlyq@gmail.com

• **Christopher Raphael-Reily**
Former Capitol Promotion Coord.
Chrisraphaelreily@gmail.com

• **Sophia Rafalli**
Former MCA Coord./Digital Marketing
skrafalli@gmail.com

• **Mike "Sandman" Sanders**
Former PD/midday host WZZK/Birmingham
sandersonair@gmail.com

• **Chad Schultz**
Former ShowOps SVP/Marketing & Industry Relations
ChadwickSW@gmail.com

• **Troy Scott**
Former MCA Sr. Dir./E-Commerce & Retail
Troy.Scottiemusic@gmail.com

• **Mara Sidweber**
Former Capitol/Southwest Regional
msidweber@sbcglobal.net

• **Chandler Stebbins**
Former MCA Mgr./Strategic Marketing
chandler.stebbins@gmail.com

• **Taylor Steele**
Former MCA Coord./Media Marketing
taylorellensteele@gmail.com

• **Val Steele**
Former Bicoastal Media Eugene, OR OM/PD/afternoon host
valsteeleaudio@gmail.com

• **Adri Stuhr**
Former air personality WKKW/Morgantown, WV
radiatoradri143@gmail.com

• **Lindsey Terry**
Former MCA Dir./Marketing & Artist Development
Lindseymterry13@gmail.com

• **Patrick Thomas**
Former *PickleJar Up All Night* host
theradiopatrick@gmail.com

• **Brittany Uhniat**
Former ACM Mgr./Creative & Content Production
brittany.uhniat@gmail.com

• **Jake Vega**
Former MCA Mgr./Business & Legal Affairs
jbvega.law@gmail.com

• **Jonathan West**
Former Hubbard KPNW/Seattle part-timer and events host and WKTI/Milwaukee afternoon host
twomanprod@gmail.com

• **Jess Wright**
Former LiveOne/Slacker Radio Country Format Captain and lead Country host
jesswrightradio@gmail.com

• **Megan Youngblood**
Former Capitol/MCA Dir./Regional Promotion
Megayoungblood@gmail.com

| LW | TW | Artist/Title (Label) | Total Points | +/- Points | Total Plays | +/- Plays | Audience | +/- Aud | Stations | ADDS |
|----|----|--|--------------|------------|-------------|-----------|----------|---------|----------|------|
| 2 | 1 | RUSSELL DICKERSON Happen To Me (Triple Tigers) ✓ <small>(Chris LaCorte, Jessie Jo Dillon, Chase McGill, Robert Hazard, Russell Dickerson)</small> | 31132 | 4832 | 9554 | 1347 | 38.689 | 6.792 | 158 | 0 |
| 3 | 2 | JELLY ROLL /Heart Of Stone (BMG/Republic/Stoney Creek) ✓ | 25797 | 2208 | 7938 | 603 | 31.400 | 3.139 | 157 | 0 |
| 4 | 3 | S. MCCREERY f/H. & THE BLOWFISH /Bottle Rockets (Triple Tigers) | 24817 | 1380 | 7768 | 348 | 29.950 | 1.629 | 159 | 0 |
| 1 | 4 | SHABOOZEY /Good News (Empire/Magnolia) | 23822 | -6940 | 7088 | -2301 | 34.191 | -4.88 | 158 | 0 |
| 6 | 5 | JORDAN DAVIS /Bar None (MCA) | 21889 | 1066 | 6778 | 282 | 27.862 | 2.841 | 159 | 0 |
| 8 | 6 | MORGAN WALLEN /I Got Better (Big Loud) ✓ | 21543 | 1666 | 6787 | 533 | 25.295 | 1.857 | 159 | 0 |
| 9 | 7 | LUKE COMBS /Back In The Saddle (Columbia) | 18798 | 1186 | 5816 | 401 | 23.167 | 1.143 | 159 | 0 |
| 11 | 8 | CHASE MATTHEW /Darlin' (Warner/WAR) ✓ | 18163 | 1503 | 5720 | 391 | 22.219 | 2.251 | 157 | 0 |
| 10 | 9 | JON PARDI /Friday Night Heartbreaker (MCA) | 18036 | 843 | 5585 | 219 | 23.891 | 0.602 | 158 | 0 |
| 12 | 10 | JACKSON DEAN /Heavens To Betsy (Big Machine) | 15946 | 344 | 4835 | 117 | 19.422 | 0.607 | 159 | 0 |
| 13 | 11 | LAINIE WILSON /Somewhere Over Laredo (Broken Bow) | 14548 | 219 | 4637 | 9 | 16.420 | 0.325 | 159 | 0 |
| 14 | 12 | ERIC CHURCH /Hands Of Time (EMI Nashville) | 14146 | -4 | 4418 | -36 | 14.758 | -0.21 | 159 | 0 |
| 15 | 13 | PARKER MCCOLLUM /What Kinda Man (MCA) | 13884 | 786 | 4204 | 263 | 17.289 | 0.605 | 156 | 0 |
| 7 | 14 | B. ZIMMERMAN f/L. COMBS /Backup Plan (Atlantic/Warner/WEA/Columbia) | 12526 | -7435 | 3836 | -2205 | 19.981 | -8.055 | 159 | 0 |
| 17 | 15 | TUCKER WETMORE /3, 2, 1 (Back Blocks/EMI Nashville) | 11748 | 649 | 3663 | 204 | 13.910 | 1.123 | 157 | 0 |
| 18 | 16 | ZACH TOP /Good Times & Tan Lines (Leo33) | 11728 | 800 | 3595 | 267 | 14.587 | 0.984 | 151 | 0 |
| 16 | 17 | HUDSON WESTBROOK /House Again (River House/Warner/WAR) | 11412 | 40 | 3594 | -5 | 13.698 | -0.039 | 156 | 0 |
| 20 | 18 | PARMALEE /Cowgirl (Stoney Creek) | 10308 | 468 | 3046 | 103 | 11.547 | 0.594 | 144 | 0 |
| 19 | 19 | KEITH URBAN /Straight Line (MCA) | 10282 | -94 | 3175 | -67 | 11.210 | -0.41 | 149 | 0 |
| 22 | 20 | R. GREEN f/E. LANGLEY /Don't Mind If I Do (Nash. Harbor/Columbia NY) | 9691 | 1037 | 2992 | 320 | 11.987 | 1.244 | 159 | 0 |
| 21 | 21 | RASCAL FLATTS w/JONAS BROTHERS /I Dare You (Republic/Big Machine) | 9134 | 81 | 2812 | 16 | 10.211 | 0.359 | 159 | 0 |
| 23 | 22 | GEORGE BIRGE /It Won't Be Long (Records Nashville) | 8893 | 736 | 2810 | 204 | 10.001 | 1.922 | 158 | 0 |
| 24 | 23 | BLAKE SHELTON /Stay Country Or Die Tryin' (Wheelhouse) | 8437 | 384 | 2611 | 100 | 9.508 | 0.107 | 157 | 0 |
| 25 | 24 | HARDY /Favorite Country Song (Big Loud) | 8302 | 544 | 2551 | 150 | 9.754 | 2.233 | 156 | 1 |
| 26 | 25 | M. MORONEY & K. CHESNEY /You Had To... (Blue Chair/Col. NY/Columbia) | 7685 | 260 | 2354 | 52 | 7.255 | 0.568 | 158 | 0 |

©2025 Country Aircheck™ — All rights reserved. Sign up free at www.countryaircheck.com. Send news to news@countryaircheck.com

**CONGRATULATIONS
CMA AWARDS NOMINEES
BRANDON LAKE
& JELLY ROLL**

**MUSICAL EVENT OF THE YEAR
HARD FOUGHT HALLELUJAH**

SONY MUSIC
PROUDLY ENTERTAINMENT
BBR
STONEY CREEK
BMG

| LW | TW | Artist/Title (Label) | Total Points +/- | Points | Total Plays +/- | Plays | Audience +/- | Aud | Stations | ADDS |
|-----------------|----|---|------------------|-------------|-----------------|-------------|--------------|--------------|------------|------------|
| 27 | 26 | 📶 JUSTIN MOORE/Time's Ticking (Valory) | 7365 | 470 | 2141 | 100 | 9.373 | 0.873 | 156 | 1 |
| 30 | 27 | 📶 MEGAN MORONEY/6 Months Later (Col. NY/Columbia) | 6979 | 628 | 2261 | 156 | 7.432 | 1.226 | 142 | 6 |
| 28 | 28 | 📶 MEGHAN PATRICK/Golden Child (Riser House) | 6965 | 162 | 2008 | 16 | 6.543 | -0.236 | 153 | 0 |
| 29 | 29 | 📶 DYLAN SCOTT/What He'll Never Have (Curb) | 6753 | 360 | 2128 | 121 | 6.024 | 0.51 | 153 | 3 |
| 31 | 30 | 📶 MAX MCNOWN/Better Me For You (Fugitive/The Orchard/Magnolia) | 6413 | 167 | 2034 | 72 | 5.395 | 0.335 | 122 | 1 |
| 32 | 31 | 📶 ERNEST/Would If I Could (Big Loud) | 5805 | -3 | 1794 | 7 | 6.602 | -0.415 | 147 | 1 |
| 34 | 32 | 📶 M. LAMBERT & C. STAPLETON/A Song To Sing (Republic/Big Loud/Mercury) | 5768 | 339 | 1751 | 130 | 5.513 | 0.357 | 145 | 6 |
| AIRBORNE | | JASON ALDEAN/How Far Does A... (Macon Music/Broken Bow) ✓ | 5751 | 5751 | 1802 | 1802 | 7.618 | 7.618 | 127 | 127 |
| 33 | 34 | 📶 PRESTON COOPER/Weak (Valory) | 5650 | 25 | 1655 | -6 | 4.769 | 0.044 | 141 | 3 |
| 35 | 35 | 📶 CHRIS YOUNG/Til The Last One Dies (Black River) | 5041 | 137 | 1630 | 34 | 4.282 | -0.1 | 149 | 0 |
| 36 | 36 | 📶 CHRIS JANSON/Me & A Beer (Warner/Harpeth 60) | 4840 | 139 | 1500 | 56 | 3.623 | 0.093 | 131 | 0 |
| 37 | 37 | 📶 T. MCGRAW f/P. MCCOLLUM/Paper Umbrellas (Big Machine/MCA) | 4604 | 64 | 1470 | 5 | 3.008 | -0.083 | 143 | 1 |
| 38 | 38 | 📶 TY MYERS/Ends Of The Earth (Records Nashville) | 4579 | 198 | 1274 | 25 | 4.425 | 0.367 | 115 | 0 |
| 39 | 39 | 📶 CODY JOHNSON/The Fall (CoJo/Warner/WMN/Capitol) | 4423 | 310 | 1201 | 55 | 4.878 | 0.9 | 104 | 3 |
| 40 | 40 | 📶 B. LAKE w/J. ROLL/Hard Fought Hallelujah (Ess./PLG/L. Ridge/S. Creek) | 4033 | 144 | 1270 | 33 | 3.472 | 0.269 | 97 | 1 |
| 43 | 41 | 📶 LOCASH/Wrong Hearts (Galaxy) | 3780 | 218 | 1100 | 81 | 2.553 | 0.112 | 114 | 0 |
| 44 | 42 | 📶 VINCENT MASON/Wish You Well (Music Soup/MCA) | 3747 | 291 | 1214 | 94 | 1.947 | 0.187 | 120 | 2 |
| 41 | 43 | 📶 DASHA/Not At This Party (Warner/WMN) | 3649 | 19 | 1130 | -25 | 1.818 | -0.031 | 113 | 0 |
| 42 | 44 | 📶 MITCHELL TENPENNY/Same Moon (Riser House/Columbia) | 3593 | 8 | 1070 | -12 | 2.387 | 0.087 | 84 | 2 |
| 46 | 45 | 📶 MORGAN WALLEN f/POST MALONE/I Ain't Coming Back (Big Loud) | 3539 | 153 | 1276 | 55 | 4.105 | 0.186 | 75 | 0 |
| 45 | 46 | KELSEA BALLERINI/Baggage (Black River) | 3359 | -47 | 1060 | -33 | 2.012 | 0.045 | 119 | 0 |
| 47 | 47 | 📶 BRETT YOUNG/Drink With You (Nash. Harbor) | 3012 | 19 | 919 | -6 | 1.401 | -0.054 | 129 | 3 |
| 49 | 48 | 📶 GAVIN ADCKOCK/Never Call Again (Warner/WMN) | 2836 | 253 | 907 | 63 | 1.504 | 0.235 | 98 | 2 |
| 48 | 49 | KANE BROWN/2 Pair (RCA) | 2742 | -167 | 796 | -48 | 1.850 | -0.127 | 91 | 1 |
| Debut | 50 | 📶 JOHN MORGAN/Kid Myself (Night Train/Broken Bow) | 2661 | 134 | 916 | 42 | 1.402 | 0.054 | 111 | 2 |

©2025 Country Aircheck™ — All rights reserved. Sign up free at www.countryaircheck.com. Send news to news@countryaircheck.com

DOGTOBER

Writer's Round

Benefitting PEDIGREE Foundation



PEDIGREE
FOUNDATION



Jamie O'Neal



Jamie Floyd



Carolyn Dawn Johnson

WEDNESDAY, OCTOBER 1

6:00PM - DOORS OPEN
7:30PM - SHOW STARTS

TICKETS: \$25

WWW.3RDANDLINDSLEY.COM

Benefitting PEDIGREE Foundation
Disaster Relief Grants



3RD AND LINDSLEY
818 3RD AVE S, NASHVILLE, TN 37210



Country Aircheck Add Leaders

| | Adds |
|--|------|
| JASON ALDEAN /How Far Does A Goodbye... (Macon Music/Broken Bow) | 127 |
| SHABOOZEY & JELLY ROLL /Amen (Empire/Magnolia/Stoney Creek) | 18 |
| L. ALAINA f/C. MATTHEW /All My Exes (Big Loud) | 10 |
| JOSH ROSS /Hate How You Look (Core/Mercury) | 9 |
| MEGAN MORONEY /6 Months Later (Columbia) | 6 |
| MIRANDA LAMBERT & C. STAPLETON /A Song... (Republic/Big Loud/Mercury) | 6 |
| OLD DOMINION /Making Good Time (3 Up 3 Down/Columbia) | 6 |
| SHANE PROFITT /Long Live Country (Triple Tigers) | 6 |
| BRANTLEY GILBERT /Want You Back (Valory) | 5 |
| THOMAS RHETT f/JORDAN DAVIS /Ain't A Bad Life (Valory) | 5 |

Country Aircheck Top Point Gainers

| | |
|---|--------|
| JASON ALDEAN /How Far Does A Goodbye... (Macon Music/Broken Bow) | 5751 ✓ |
| RUSSELL DICKERSON /Happen To Me (Triple Tigers) | 4832 ✓ |
| JELLY ROLL /Heart Of Stone (BMG/Republic/Stoney Creek) | 2208 ✓ |
| MORGAN WALLEN /I Got Better (Big Loud) | 1666 ✓ |
| CHASE MATTHEW /Darlin' (Warner/WAR) | 1503 ✓ |
| S. MCCREERY f/H. & THE BLOWFISH /Bottle Rockets (Triple Tigers) | 1380 |
| LUKE COMBS /Back In The Saddle (Columbia) | 1186 |
| JORDAN DAVIS /Bar None (MCA) | 1066 |
| R. GREEN f/E. LANGLEY /Don't Mind If I Do (Nash. Harbor/Columbia NY) | 1037 |
| JON PARDI /Friday Night Heartbreaker (MCA) | 843 |

Country Aircheck Top Spin Gainers

| | |
|---|------|
| JASON ALDEAN /How Far Does A Goodbye... (Macon Music/Broken Bow) | 1802 |
| RUSSELL DICKERSON /Happen To Me (Triple Tigers) | 1347 |
| JELLY ROLL /Heart Of Stone (BMG/Republic/Stoney Creek) | 603 |
| MORGAN WALLEN /I Got Better (Big Loud) | 533 |
| LUKE COMBS /Back In The Saddle (Columbia) | 401 |
| CHASE MATTHEW /Darlin' (Warner/WAR) | 391 |
| S. MCCREERY f/H. & THE BLOWFISH /Bottle Rockets (Triple Tigers) | 348 |
| R. GREEN f/E. LANGLEY /Don't Mind If I Do (Nash. Harbor/Columbia NY) | 320 |
| JORDAN DAVIS /Bar None (MCA) | 282 |
| ZACH TOP /Good Times & Tan Lines (Leo33) | 267 |

Activator Top Point Gainers

| | |
|---|--------|
| JASON ALDEAN /How Far Does A Goodbye... (Macon Music/Broken Bow) | 1774 ✓ |
| JELLY ROLL /Heart Of Stone (BMG/Republic/Stoney Creek) | 1206 ✓ |
| MORGAN WALLEN /I Got Better (Big Loud) | 654 ✓ |
| PARMALEE /Cowgirl (Stoney Creek) | 648 ✓ |
| LUKE COMBS /Back In The Saddle (Columbia) | 624 ✓ |
| RUSSELL DICKERSON /Happen To Me (Triple Tigers) | 457 |
| CHASE MATTHEW /Darlin' (Warner/WAR) | 415 |
| JACKSON DEAN /Heavens To Betsy (Big Machine) | 390 |
| VINCENT MASON /Wish You Well (Music Soup/MCA) | 349 |
| ZACH TOP /Good Times & Tan Lines (Leo33) | 275 |

Activator Top Spin Gainers

| | |
|---|-----|
| JASON ALDEAN /How Far Does A Goodbye... (Macon Music/Broken Bow) | 288 |
| JELLY ROLL /Heart Of Stone (BMG/Republic/Stoney Creek) | 208 |
| PARMALEE /Cowgirl (Stoney Creek) | 137 |
| MORGAN WALLEN /I Got Better (Big Loud) | 128 |
| LUKE COMBS /Back In The Saddle (Columbia) | 108 |
| JACKSON DEAN /Heavens To Betsy (Big Machine) | 70 |
| RUSSELL DICKERSON /Happen To Me (Triple Tigers) | 65 |
| CHASE MATTHEW /Darlin' (Warner/WAR) | 63 |
| VINCENT MASON /Wish You Well (Music Soup/MCA) | 63 |
| HARDY /Favorite Country Song (Big Loud) | 47 |

Country Aircheck Top Recurrents

| | Points |
|--|--------|
| THOMAS RHETT /After All The Bars Are Closed (Valory) | 20286 |
| MORGAN WALLEN /Just In Case (Big Loud) | 16633 |
| COREY KENT /This Heart (Combustion/RCA) | 12725 |
| MORGAN WALLEN /I'm The Problem (Big Loud) | 12483 |
| K. WETZEL & J. MURPH /High Road (Col. NY/Records Nashville) | 11717 |
| TYLER HUBBARD /Park (EMI Nashville) | 10214 |
| JELLY ROLL /Liar (BMG/Republic/Stoney Creek) | 9187 |
| LOCASH /Hometown Home (Galaxy) | 8091 |
| SAM HUNT /Country House (MCA) | 7189 |
| LUKE BRYAN /Country Song Came On (MCA) | 6926 |

©2025 Country Aircheck™ All rights reserved. Sign up at countryaircheck.com • Send news to news@countryaircheck.com ✓=Top 5 Point Gainers



Are you a
Parent or Caregiver
working in the music industry?

Or maybe you are looking to start a family or have questions about benefits and care? We want to tell you about an awesome new group founded by industry execs in Nashville- the Family Alliance in Music (aka FAM). Connect with us and sign up for our newsletter to learn more.







FamilyAllianceinMusic.org



@FamilyAllianceinMusic

AIRPLAY BY STATION OWNER

| | | |  iHeart (52) | | |  Audacy (17) | | |  Cumulus (17) | | |  Townsquare (5) | | |
|----|----|--|---|-------|----------|--|-------|----------|--|-------|----------|--|-------|----------|
| LW | TW | ARTIST/Title | Rank | Plays | Avg/ Sta | Rank | Plays | Avg/ Sta | Rank | Plays | Avg/ Sta | Rank | Plays | Avg/ Sta |
| 2 | 1 | RUSSELL DICKERSON/Happen To Me | 1 | 3,258 | 62.7 | 1 | 1,030 | 60.6 | 1 | 961 | 56.5 | 1 | 392 | 56.0 |
| 3 | 2 | JELLY ROLL/Heart Of Stone | 3 | 3,027 | 58.2 | 7 | 638 | 37.5 | 3 | 764 | 44.9 | 6 | 325 | 46.4 |
| 4 | 3 | S. MCCREERY f/H. & THE BLOWFISH/Bottle Rockets | 5 | 2,778 | 53.4 | 5 | 696 | 40.9 | 7 | 611 | 35.9 | 2 | 332 | 47.4 |
| 1 | 4 | SHABOOZEY/Good News | 2 | 3,102 | 59.7 | 8 | 587 | 34.5 | 14 | 464 | 27.3 | 3 | 330 | 47.1 |
| 6 | 5 | JORDAN DAVIS/Bar None | 7 | 2,359 | 45.4 | 4 | 728 | 42.8 | 5 | 716 | 42.1 | 7 | 324 | 46.3 |
| 8 | 6 | MORGAN WALLEN/I Got Better | 9 | 2,097 | 40.3 | 2 | 772 | 45.4 | 2 | 852 | 50.1 | 13 | 201 | 28.7 |
| 9 | 7 | LUKE COMBS/Back In The Saddle | 13 | 1,735 | 33.4 | 6 | 678 | 39.9 | 4 | 742 | 43.6 | 14 | 198 | 28.3 |
| 11 | 8 | CHASE MATTHEW/Darlin' | 6 | 2,401 | 46.2 | 10 | 527 | 31.0 | 33 | 307 | 18.1 | 15 | 196 | 28.0 |
| 10 | 9 | JON PARDI/Friday Night Heartbreaker | 12 | 1,794 | 34.5 | 13 | 480 | 28.2 | 6 | 702 | 41.3 | 16 | 191 | 27.3 |
| 12 | 10 | JACKSON DEAN/Heavens To Betsy | 18 | 1,499 | 28.8 | 17 | 378 | 22.2 | 9 | 581 | 34.2 | 19 | 187 | 26.7 |
| 13 | 11 | LAINY WILSON/Somewhere Over Laredo | 15 | 1,647 | 31.7 | 16 | 403 | 23.7 | 15 | 445 | 26.2 | 17 | 190 | 27.1 |
| 14 | 12 | ERIC CHURCH/Hands Of Time | 16 | 1,587 | 30.5 | 11 | 489 | 28.8 | 27 | 375 | 22.1 | 18 | 189 | 27.0 |
| 15 | 13 | PARKER MCCOLLUM/What Kinda Man | 19 | 1,274 | 24.5 | 22 | 320 | 18.8 | 20 | 429 | 25.2 | 11 | 204 | 29.1 |
| 7 | 14 | BAILEY ZIMMERMAN f/LUKE COMBS/Backup Plan | 41 | 566 | 10.9 | 3 | 739 | 43.5 | 25 | 378 | 22.2 | 5 | 326 | 46.6 |
| 17 | 15 | TUCKER WETMORE/3, 2, 1 | 25 | 996 | 19.2 | 18 | 373 | 21.9 | 12 | 503 | 29.6 | 12 | 202 | 28.9 |
| 18 | 16 | ZACH TOP/Good Times & Tan Lines | 27 | 947 | 18.2 | 15 | 442 | 26.0 | 10 | 536 | 31.5 | 28 | 146 | 20.9 |
| 16 | 17 | HUDSON WESTBROOK/House Again | 28 | 921 | 17.7 | 9 | 566 | 33.3 | 31 | 321 | 18.9 | 21 | 184 | 26.3 |
| 20 | 18 | PARMALEE/Cowgirl | 23 | 1,074 | 20.7 | 28 | 295 | 17.4 | 117 | 43 | 2.5 | 23 | 172 | 24.6 |
| 19 | 19 | KEITH URBAN/Straight Line | 20 | 1,157 | 22.3 | 30 | 272 | 16.0 | 32 | 307 | 18.1 | 27 | 150 | 21.4 |
| 22 | 20 | RILEY GREEN f/ELLA LANGLEY/Don't Mind If I Do | 43 | 543 | 10.4 | 24 | 314 | 18.5 | 11 | 515 | 30.3 | 25 | 155 | 22.1 |

MARKET AIRPLAY PROFILE - AUGUSTA, GA

| Rank | | WKXC | WLUB | Total |
|------|--|------|------|-------|
| 1 | JELLY ROLL/Heart Of Stone | 54 | 61 | 115 |
| 2 | SHABOOZEY/Good News | 50 | 59 | 109 |
| 3 | RUSSELL DICKERSON/Happen To Me | 42 | 63 | 105 |
| 4 | THOMAS RHETT/After All The Bars Are Closed | 45 | 57 | 102 |
| 5 | CHASE MATTHEW/Darlin' | 48 | 53 | 101 |
| 6t | SCOTTY MCCREERY f/HOOTIE & THE BLOWFISH/Bottle Rockets | 40 | 53 | 93 |
| 6t | MORGAN WALLEN/I Got Better | 44 | 49 | 93 |
| 8 | JON PARDI/Friday Night Heartbreaker | 46 | 46 | 92 |
| 9t | JORDAN DAVIS/Bar None | 36 | 49 | 85 |
| 9t | TYLER HUBBARD/Park | 35 | 50 | 85 |
| 11 | JACKSON DEAN/Heavens To Betsy | 51 | 27 | 78 |
| 12t | MORGAN WALLEN/Just In Case | 40 | 30 | 70 |
| 12t | KOE WETZEL & JESSIE MURPH/High Road | 31 | 39 | 70 |
| 14t | LUKE COMBS/Back In The Saddle | 35 | 34 | 69 |
| 14t | ERIC CHURCH/Hands Of Time | 24 | 45 | 69 |
| 16 | MORGAN WALLEN/I'm The Problem | 34 | 33 | 67 |
| 17 | COREY KENT/This Heart | 15 | 51 | 66 |
| 18 | PARKER MCCOLLUM/What Kinda Man | 35 | 27 | 62 |
| 19 | RASCAL FLATTS w/JONAS BROTHERS/I Dare You | 34 | 23 | 57 |
| 20 | HUDSON WESTBROOK/House Again | 30 | 22 | 52 |
| 20t | PARKER MCCOLLUM/What Kinda Man | 13 | 41 | 54 |

FLASHBACK No. 1s

1 YEAR AGO
CHRIS YOUNG
Young Love & Saturday Nights



5 YEARS AGO
LUKE COMBS
Lovin' On You



10 YEARS AGO
THOMAS RHETT
Crash And Burn



15 YEARS AGO
LADY A
Our Kind Of Love



20 YEARS AGO
BROOKS & DUNN
Play Something Country



25 YEARS AGO
JO DEE MESSINA
That's The Way



COUNTRY AIRCHECK ACTIVITY

MORGAN WALLEN f/POST MALONE/I Ain't Coming Back (Big Loud)

Moves 46-45*
3539 Points, 1276 Spins; No adds

KELSEA BALLERINI/Baggage (Black River)

Moves 45-46
3359 Points, 1060 Spins; No adds

BRETT YOUNG/Drink With You (Nash. Harbor)

Remains at 47*
3012 Points, 919 Spins
3 adds: **KNIX, WKLI, WWWF**

GAVIN ADCOCK/Never Call Again (Warner/WMN)

Moves 49-48*
2836 Points, 907 Spins
2 adds: **WTHT, WWWF**

KANE BROWN/2 Pair (RCA)

Moves 48-49
2742 Points, 796 Spins
1 add: **WWWF**

JOHN MORGAN/Kid Myself (Night Train/Broken Bow)

Debut 50*
2661 Points, 916 Spins
2 adds: **WAVW, WWWF**

ADD DATES

Send yours to adds@countryaircheck.com

SEPTEMBER 22
THOMAS RHETT f/JORDAN DAVIS/Ain't a Bad Life (Valory/MCA)

SEPTEMBER 29
MATT COOPER/Highs & Lows (Quartz Hill)

OCTOBER 6
ASHLEY COOKE/The Hell You Are (Big Loud)

CHECK OUT

SEPTEMBER 19

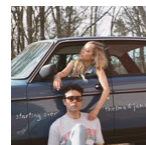
Chase McDaniel *Lost Ones* (Big Machine)
McDaniel co-penned every song on his Lindsay Rimes-produced 12-track debut album, including lead single "Burned Down Heaven."



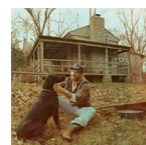
Josh Ross *Later Tonight* (Core/Mercury)
"The title of this record, and the title track, became the thread that tied this project together over the last couple of years," he says. "Every single we put out, every show we've played has led to this. We dug deep writing for this album, leaning into getting caught in your feelings, breaking up, making up. No matter what, all roads led back to 'Later Tonight.'"



Thelma & James *Starting Over* (Big Loud)
The eight-song project is the duo's (MacKenzie Porter and Jake Etheridge) debut. Porter and Etheridge co-wrote every song alongside collaborators including Natalie Hemby, Lori McKenna and Josh Osborne.



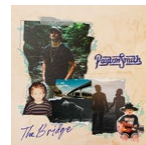
Chase Rice *Eldora* (—)
Written primarily in Eldora, CO in the days following his performance at Red Rocks, Rice says the 12-song album is, "the kind of music I've always loved and the kind of stories I've always wanted to tell." He adds, "I hope the past few years have helped fans see that this is the real me, not the person who was chasing trends or afraid to do something different."



Runaway June *New Kind Of Emotion* (Quartz Hill)
The trio's Jennifer Wayne, Natalie Stovall and Stevie Woodward co-wrote 11 of the 13 tracks on their sophomore album. "I want people to know that this album is authentically Runaway June," says Stovall. "It's us searching for who we are, and you'll hear some different influences because it spans a three-year period for us. We were trying different things and we were in different stages of life, so the album really puts a stamp on that moment in time for us."



Payton Smith *The Bridge* (Combustion)
The Chris Farren-produced album follows 2023's *What Colors Your Wild* and features 10 songs. He's celebrating the release at Chief's on Broadway in Nashville Thursday (9/18).



©2025 Country Aircheck™ — All rights reserved. Sign up free at www.countryaircheck.com. Send news to news@countryaircheck.com

**Give monthly.
Get your shirt!**

musicgives.org

| LW | TW | Artist/Title (Label) | Points | +/- Points | Plays | +/- Plays | Stations | ADDS |
|----|----|--|--------|------------|-------|-----------|----------|------|
| 2 | 1 | RUSSELL DICKERSON Happen To Me (Triple Tigers) | 15219 | 457 | 2880 | 65 | 67 | 0 |
| 1 | 2 | SCOTTY MCCREERY f/HOOTIE & THE BLOWFISH /Bottle Rockets (Triple Tigers) | 15025 | -292 | 2829 | -49 | 67 | 0 |
| 4 | 3 | JORDAN DAVIS /Bar None (MCA) | 13057 | -72 | 2464 | -4 | 67 | 0 |
| 8 | 4 | JELLY ROLL /Heart Of Stone (BMG/Republic/Stoney Creek) | 13029 | 1206 | 2466 | 208 | 67 | 0 |
| 7 | 5 | MORGAN WALLEN /I Got Better (Big Loud) | 12903 | 654 | 2437 | 128 | 66 | 0 |
| 9 | 6 | LUKE COMBS /Back In The Saddle (Columbia) | 12121 | 624 | 2290 | 108 | 66 | 0 |
| 5 | 7 | SHABOOZEY /Good News (Empire/Magnolia) | 11408 | -1542 | 2108 | -322 | 66 | 1 |
| 10 | 8 | JON PARDI /Friday Night Heartbreaker (MCA) | 9795 | -648 | 1859 | -98 | 67 | 0 |
| 11 | 9 | LAINIE WILSON /Somewhere Over Laredo (Broken Bow) | 9579 | -391 | 1803 | -75 | 67 | 0 |
| 6 | 10 | BAILEY ZIMMERMAN f/LUKE COMBS /Backup Plan (Atlantic/Warner/WEA/Columbia) | 9551 | -2701 | 1812 | -558 | 65 | 0 |
| 13 | 11 | PARKER MCCOLLUM /What Kinda Man (MCA) | 8839 | -8 | 1704 | -8 | 65 | 0 |
| 12 | 12 | ERIC CHURCH /Hands Of Time (EMI Nashville) | 8722 | -425 | 1671 | -51 | 67 | 0 |
| 14 | 13 | CHASE MATTHEW /Darlin' (Warner/WAR) | 8459 | 415 | 1591 | 63 | 64 | 0 |
| 15 | 14 | ZACH TOP /Good Times & Tan Lines (Leo33) | 8369 | 275 | 1578 | 36 | 65 | 0 |
| 16 | 15 | JACKSON DEAN /Heavens To Betsy (Big Machine) | 8301 | 390 | 1593 | 70 | 65 | 1 |
| 17 | 16 | HUDSON WESTBROOK /House Again (River House/Warner/WAR) | 7342 | -316 | 1397 | -50 | 65 | 0 |
| 18 | 17 | TUCKER WETMORE /3, 2, 1 (Back Blocks/EMI Nashville) | 7128 | 105 | 1373 | 17 | 65 | 1 |
| 20 | 18 | RILEY GREEN f/ELLA LANGLEY /Don't Mind If I Do (Nash. Harbor/Columbia NY) | 6922 | 244 | 1303 | 45 | 64 | 2 |
| 19 | 19 | KEITH URBAN /Straight Line (MCA) | 6543 | -296 | 1251 | -52 | 64 | 0 |
| 21 | 20 | HARDY /Favorite Country Song (Big Loud) | 5639 | 246 | 1077 | 47 | 63 | 3 |
| 23 | 21 | MEGAN MORONEY & KENNY CHESNEY /You Had To Be There (Blue Chair/Col. NY/ | 5088 | 39 | 982 | 2 | 63 | 0 |
| 22 | 22 | BLAKE SHELTON /Stay Country Or Die Tryin' (Wheelhouse) | 5036 | -138 | 976 | -17 | 62 | 1 |
| 24 | 23 | GEORGE BIRGE /It Won't Be Long (Records Nashville) | 4902 | 171 | 936 | 28 | 56 | 0 |
| 25 | 24 | MEGAN MORONEY /6 Months Later (Col. NY/Columbia) | 4897 | 229 | 912 | 32 | 56 | 0 |
| 31 | 25 | PARMALEE /Cowgirl (Stoney Creek) | 4297 | 648 | 866 | 137 | 59 | 1 |
| 26 | 26 | RASCAL FLATTS w/JONAS BROTHERS /I Dare You (Republic/Big Machine) | 4206 | -99 | 821 | -21 | 58 | 1 |
| 27 | 27 | M. LAMBERT & C. STAPLETON /A Song To Sing (Republic/Big Loud/Mercury) | 4081 | -159 | 756 | -20 | 62 | 0 |
| 30 | 28 | MORGAN WALLEN f/POST MALONE /I Ain't Coming Back (Big Loud) | 3983 | 96 | 720 | 18 | 43 | 0 |
| 28 | 29 | DYLAN SCOTT /What He'll Never Have (Curb) | 3810 | -72 | 725 | -12 | 65 | 0 |
| 29 | 30 | JUSTIN MOORE /Time's Ticking (Valory) | 3676 | -190 | 688 | -24 | 57 | 0 |

©2025 Country Aircheck™ — All rights reserved. Sign up free at www.countryaircheck.com. Send news to news@countryaircheck.com



HELP US DELIVER

MUSICIANS ON CALL

THE HEALING POWER OF MUSIC TO PATIENTS

www.musiciansoncall.org

| LW | TW | Artist/Title (Label) | Points | +/- | Points | Plays | +/- | Plays | Stations | Adds |
|-------|----|---|--------|-----|--------|-------|-----|-------|----------|------|
| 32 | 31 | CODY JOHNSON /The Fall (CoJo/Warner/WMN) | 3112 | | 214 | 553 | | 37 | 50 | 0 |
| 34 | 32 | TIM MCGRAW f/PARKER MCCOLLUM /Paper Umbrellas (Big Machine/MCA) | 2838 | | 129 | 522 | | 15 | 48 | 1 |
| 33 | 33 | ERNEST /Would If I Could (Big Loud) | 2833 | | 72 | 504 | | 12 | 51 | 0 |
| 35 | 34 | MEGHAN PATRICK /Golden Child (Riser House) | 2673 | | 103 | 510 | | 30 | 51 | 2 |
| 36 | 35 | CHRIS JANSON /Me & A Beer (Warner/Harpeth 60) | 2617 | | 183 | 495 | | 32 | 50 | 1 |
| 37 | 36 | MAX MCNOWN /Better Me For You (Fugitive/The Orchard/Magnolia) | 2262 | | 246 | 421 | | 44 | 50 | 2 |
| 39 | 37 | PRESTON COOPER /Weak (Valory) | 1859 | | 7 | 337 | | 4 | 47 | 2 |
| 38 | 38 | CHRIS YOUNG /Til The Last One Dies (Black River) | 1824 | | -15 | 338 | | -4 | 43 | 0 |
| Debut | 39 | JASON ALDEAN /How Far Does A Goodbye Go (Macon Music/Broken Bow) | 1774 | | 1774 | 288 | | 288 | 32 | 22 |
| 42 | 40 | B. LAKE w/J. ROLL /Hard Fought Hallelujah (Essential/PLG/Lyric Ridge/Stoney Creek) | 1558 | | 187 | 286 | | 38 | 35 | 0 |
| 40 | 41 | TY MYERS /Ends Of The Earth (Records Nashville) | 1426 | | -76 | 272 | | -13 | 44 | 0 |
| 41 | 42 | LOCASH /Wrong Hearts (Galaxy) | 1337 | | -148 | 246 | | -24 | 36 | 1 |
| 43 | 43 | KELSEA BALLERINI /Baggage (Black River) | 1280 | | 10 | 236 | | 4 | 34 | 1 |
| 45 | 44 | LEWIS BRICE /She Loves My Country (Pump House) | 1270 | | 194 | 244 | | 36 | 16 | 0 |
| 50 | 45 | VINCENT MASON /Wish You Well (Music Soup/MCA) | 1268 | | 349 | 228 | | 63 | 16 | 0 |
| 48 | 46 | KELSEY HART /Fireworks (Curb) | 1121 | | 101 | 215 | | 13 | 25 | 0 |
| 44 | 47 | DASHA /Not At This Party (Warner/WMN) | 1094 | | -42 | 209 | | -9 | 39 | 0 |
| 47 | 48 | HARPER GRACE & KELSEY HART /Freedom (Curb) | 1054 | | 48 | 202 | | 9 | 15 | 1 |
| 46 | 49 | GAVIN ADCOCK /Never Call Again (Warner/WMN) | 1014 | | -9 | 188 | | 3 | 23 | 0 |
| 54 | 50 | KANE BROWN /2 Pair (RCA) | 1006 | | 95 | 166 | | 10 | 26 | 0 |
| 49 | 51 | OLD DOMINION /Making Good Time (3 Up 3 Down/Columbia) | 942 | | -24 | 187 | | 7 | 25 | 4 |
| 51 | 52 | BRETT YOUNG /Drink With You (Nash. Harbor) | 892 | | -27 | 170 | | -4 | 24 | 0 |
| 55 | 53 | JOHN MORGAN /Kid Myself (Night Train/Broken Bow) | 889 | | -5 | 159 | | -2 | 21 | 0 |
| 58 | 54 | CODY JINKS /The Others (Late August) | 848 | | 55 | 156 | | 12 | 14 | 1 |
| 56 | 55 | COLE SWINDELL /We Can Always Move On (Warner/WAR) | 833 | | -68 | 173 | | -14 | 18 | 0 |
| Debut | 56 | JOSH ROSS /Hate How You Look (Core/Mercury) | 779 | | 138 | 126 | | 21 | 6 | 2 |
| 57 | 57 | DUSTIN LYNCH /Easy To Love (Broken Bow) | 754 | | -99 | 147 | | -14 | 20 | 0 |
| 52 | 58 | MACKENZIE CARPENTER f/MIDLAND /I Wish You Would (Valory/Big Machine) | 728 | | -193 | 131 | | -31 | 18 | 0 |
| Debut | 59 | THOMAS RHETT f/JORDAN DAVIS /Ain't A Bad Life (MCA/Valory) | 712 | | 209 | 107 | | 36 | 12 | 7 |
| 59 | 60 | RANDY COBB /Country Boy (South Sixty Five) | 680 | | -77 | 124 | | -13 | 11 | 0 |

©2025 Country Aircheck. All rights reserved. Sign up for our free newsletter at www.countryaircheck.com or call 1-800-343-7000. #TidyUpTheChart

Supporting broadcast professionals

\$20 million in grants funded

Serving all US states & territories

Find out how the **BFOA** can help
broadcasters in your community.



LEARN MORE www.broadcasterfoundation.org