

COUNTRY AIRCHECK

ISSUE THREE

MUSIC EDITION

SEPTEMBER 5, 2006

PHIL VASSAR

ARISTA
"THE WOMAN IN MY LIFE"

Breaking through with close to
100 GREAT stations!

14 TOTAL NEW ADDS TODAY!



What The PPM Means To Country

Arbitron recently hosted almost 100 group heads, consultants, researchers and others for a day long session on the company's Personal People Meter (PPM) and its potential impact on radio. Though only two Country consultants were in attendance, Albright & O'Malley's **Jaye Albright** has agreed to share her impressions of what was presented.

One item that particularly caught Albright's attention was Arbitron VP/PPM New Product Development **John Snyder's** prediction that programmers' workloads will increase. Albright said Snyder told the group, "We will have a better understanding of what drives radio usage and what stations do to help and hurt, creating a drive to act on that information quickly and competitively."

Albright adds, "There will be more data to crunch and understand, more calls for accountability on every programming element. The knowledge base will increase dramatically as actual usage is metered and measured in more markets. For example, a St. Jude Radiothon measured by PPM cost a Houston Country station one-third of its cume. Meanwhile, talker KPRC gained audience immediately after the Mel Gibson drunk driving arrest as people tuned in to hear what other folks were thinking about it.

"KILT-FM got a big listening spike the day after they promoted that they'd be 'giving away tickets to see George Strait at The Houston Livestock Show And Rodeo.' As Snyder told us, 'Compelling content shows up.'"

According to Albright, Snyder also told the group that people tune out for commercials, but "no rule fits all. A four-minute commercial break in a Houston morning show that was preceded by a strong and specific tease didn't show much audience loss. But a break of the same length on the same station caused an 18% AQH loss in afternoon drive."

Albright points out, "The quality of the commercials may be as important, or more so, as the quantity of them, as well as the value of the content which surrounds them. One thing is certain as the PPM comes into use in your market and ratings even down to the weekly trend level become available – programmers will be tasked with winning in situations like these."

(continued on page 7)

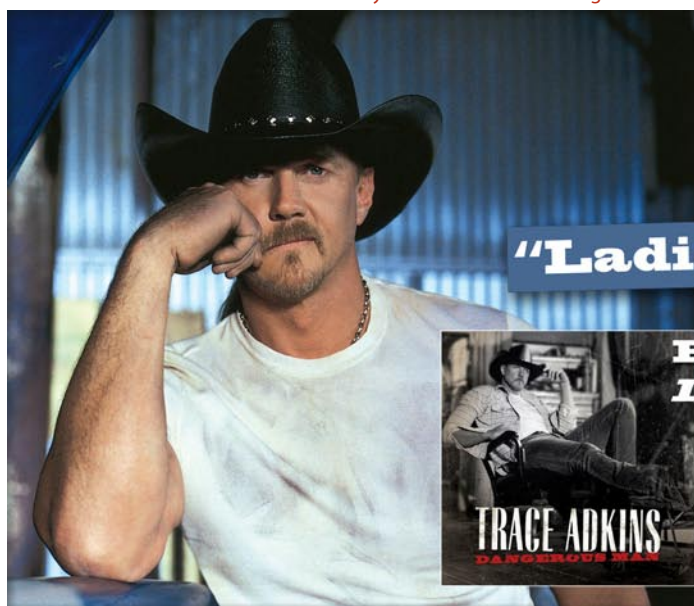
King To Queen City As WYGY's PD

WYCT (The Cat)/Pensacola, FL PD **Kevin King** has been named PD of Cumulus Country WYGY/Cincinnati. Cluster OM **T.J. Holland** has been programming the station since December 2005. He retains that post while also continuing as PD of AC WRRM (Warm 98).

King, who will start sometime in the next few weeks, has been WYCT's PD for almost two years. He previously programmed Country WKKT/Charlotte, WKHK/Richmond, WRBT/Harrisburg and WKXC/Augusta, GA.

Gig Alert: A&O's **Jaye Albright** is already on the prowl for a new PD. She notes, "Since The Cat signed on two and a half years ago, ratings have literally gone from zero to first, 25-54. WYCT was won small market ACM Station of the Year, is

©2006 Country Aircheck™ — All rights reserved. To subscribe visit www.countryaircheck.com

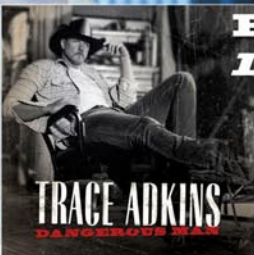


TRACE ADKINS


"Ladies Love Country Boys"

From the #1 selling album
Dangerous Man

COULDN'T WAIT:
KKCS, KSOP, WGAR, WNCY, WWGR, WWNU



www.capitolnashville.com www.traceadkins.com



Columbia proudly presents

The New SMASH From

ashleymonroe

with RONNIE DUNN

“I DON'T WANT TO”

ADD NOW!

KYGO, WMIL & WIVK
couldn't wait!



“Ashley has that ‘star quality’ country music needs! She is an amazing talent and this song really shows it. We gave the song a test drive and the listener response was huge! It’s an instant add on KYGO!” - Joel Burke, KYGO

Impacting Now Coast-To-Coast!



SONY BMG
MUSIC ENTERTAINMENT
© 2006 BMG Music.

nominated as Marconi Small Market Station of the Year and small market Country Music Association Station of the Year for 2006." T&Rs to her at Albright & O'Malley Country Radio Specialists, 7699 Fletcher Bay Rd NE, Bainbridge Island, WA 98110, or albright@usa.net.

Regent Shuffles Into Buffalo

Regent Communications has agreed to buy five Buffalo radio stations from CBS Radio, including market leading Country outlet WYRK and Classic Country WECK-AM, for \$125 million in cash. While the sale is not expected to close until year end, Regent will begin operating the five stations under a Local Marketing Agreement in October. Other stations in the deal are Urban WBLK, Talk WBUF-FM and AC WJYE. Country stations in the region owned by Regent include WGNA/Albany, NY, WFRG/Utica-Rome, NY, and WFRY/Watertown, NY. With the purchase, Regent will own 68 stations in 14 markets.

CMA's 40th Awards Bash Takes Shape

The big push toward the *40th Annual CMA Awards* has begun in earnest with last week's nominations announcement. After traveling to New York last year, the show airs this Nov. 6 from Nashville, and on a new network – ABC. **Brooks & Dunn** host for the third time, with **Walter C. Miller** as Executive Producer and **Robert Deaton** as Consulting Producer. Tickets, which are available for the first time in Nashville, go on sale Sept. 15.

Harold Bradley, **Sonny James** and **George Strait** will be inducted into the Country Music Hall of Fame during this year's telecast. Bradley enters in the "Recording and/or Touring Musician Active Prior to 1980" category, James enters in the "Career Achieved National Prominence Between World War II and 1975" category, while Strait's category is "Career Achieved National Prominence Between 1975 and the Present."

CMA has again commissioned 3-D pop artist **Charles Fazzino** to create artwork for the CMA Awards show, this time for the *40th Annual CMA Awards* set for November in Nashville. Fazzino created artwork for last year's awards in New York.

CMA is also staging Broadway Meets Country for the second consecutive year, recreating the event held last year in New York

DATE CHECK

September 21 - Fourth Annual Source Foundation Awards. www.sourcenashville.com

September 25 - NSAI World's Largest #1 Party. www.nashvillesongwriters.com

October 22 - 37th Annual NSAI/Nashville Songwriters Foundation Awards. www.nashvillesongwriters.com

October 23 - 44th Annual ASCAP Country Awards. www.ascap.com

October 30 - Second Annual Broadway Meets Country. www.cmaworld.com

November 4 - 54th Annual BMI Country Awards. www.bmi.com

November 6 - 40th Annual CMA Awards. www.cmaawards.com

at the Tennessee Performing Arts Center on Oct. 30. Proceeds benefit TPAC Education and the Actors' Fund of America. **Josh Gracin**, **Raul Malo**, **Lorrie Morgan**, **Jamie O'Neal**, **SheDaisy** and **Lee Ann Womack** will be joined by stage stars **Laura Bell Bundy**, **Dixie Carter**, **Michael Cerveris** and **Brian D'Arcy James** among others.

Personality Finalists

Without further ado, here are this year's Broadcast Personality of the Year finalists:

Major Market: Chris Carr, KEEY/Minneapolis; Cliff Dumas, Morgan Thomas, Bill Tanner, *Cliff & Company*, KSON/San Diego; Kelly Ford, Jonathan Wilde with Steve "Mudflap" McGrew, KYGO/Denver; Donna Valentine, John Hines, Mike

©2006 Country Aircheck™ — All rights reserved. Send news to news@countryaircheck.com



BROKEN BRIDGES SOUNDTRACK—IN STORES NOW!—FEATURING...

Lindsey Haun

"Broken"

Early Believers...KEGA, KKCS, WGGY, WFBE, WXTU

- Over 7500 digital singles sold after four weeks of video rotations
- Enters CMT Top 20 Countdown at #19 this week & dominates CMT Power Pick
- The #10 Top Streaming video at CMT.com

Airplay Impact Date: 9/11 www.ShowDogNashville.com



BROKEN BRIDGES

FEATURING SONGS BY
TOBY KEITH
WILLIE NELSON
BEBE WINANS
& LINDSEY HAUN



SHOW DOG NASHVILLE

© & © 2006 SHOW DOG RECORDS, LLC. DISTRIBUTED BY UNIVERSAL MUSIC & VIDEO DISTRIBUTION, CORP.

Mussman, *The K102 Wake Up Crew*, KEEY/Minneapolis; Laurie DeYoung, WPOC/Baltimore.

Large Market: JD Cannon, WFMS/Indianapolis; Eddie Stubbs, WSM-AM/Nashville; Karen Dalessandro, Scott Dolphin, Tony Hess, *The Moo Crew*, WMIL/Milwaukee; Sammy Alfred, Bob Cole, *Sam & Bob Morning Call In Show*, KVET/Austin; Bill Whyte, Amanda Orlando, *The B-105.1 Morning Show*, WUBE/Cincinnati.

Medium Market: Bill Ellis, Beth Bradley, *Ellis & Bradley*, WSSL/Greenville, SC; Kevin Richards, WGNA/Albany, NY; Neal Dionne, Reese Rickards, *Neal and Reese -- The Moy'nin Boys*, WBCT/Grand Rapids, MI; Steve Lundy, Gina Melton, Craig Underhill, *The Kat 103 Morning Show*, KXKT/Omaha; Jack Ryan, WIVK/Knoxville.

Small Market: Sherri Crowder, WAKG/Roanoke, VA; Bill Barrett, Tim Fox, Tracy Berry, *Barrett, Fox & Berry*, KKNU/Eugene, OR; Buddy Baron, WBBN/Laurel, MS; Marty McFly, Stewart James, *McFly and the Ride Home*, WGSQ/Cookeville, TN; Rick Stephenson, Lisa Franks, WFYR, Peoria, IL.

National: Lon Helton, *Country Countdown USA*, Westwood One; Danny Wright, *Danny Wright All Night*, JRN; Lorianne Crook & Charlie Chase, *The Crooks and Chase Countdown*, Jim Owens Entertainment.

Station Finalists

This year's Radio Station of the Year finalists are:

Major Market: KKBQ/Houston, WIL/St. Louis, WQYK/Tampa, WUSN/Chicago, WXTU/Philadelphia.

Large Market: KASE/Austin, KVET/Austin, WFMS/Indianapolis, WMIL/Milwaukee, WUBE/Cincinnati.

Medium Market: KUZZ/Bakersfield, KXKT/Omaha, WBBS/Syracuse, WIVK/Knoxville, WSSL/Greenville, SC.

Small Market: KTTS/Branson, MO; WFYR/Peoria, IL; WGSQ/Cookeville, TN; WXBW/Pensacola; WYCT/Pensacola.

Radio News

Programming: WYOK/Mobile, AL APD/MD/morning driver **Cadillac Jack** has left the Cumulus Country outlet that debuted last April. He can be reached at cadillacjackk@gmail.com or

TUBE CHECK

Wednesday (9/6) - Dwight Yoakam, *Tonight Show* (NBC); Toby Keith, *Jimmy Kimmel Live* (ABC); Ronnie Milsap, *Master Series* (GAC); Trace Adkins, Reba McEntire, *Offstage with Lorianne Crook* (GAC).

Thursday (9/7) - Toby Keith, *CMT Insider Special Edition* (CMT).

Friday (9/8) - Alan Jackson, *Today* (NBC); Sam Bush w/ Emmylou Harris, *Tonight Show* (NBC); Tim McGraw, Faith Hill, *Fashion Rocks* (CBS); Toby Keith, Lindsey Haun, *Duets* (Fox); Sara Evans, *Foxworthy's Big Night Out* (CMT).

Saturday (9/9) - Taylor Swift, *CMT Insider* (CMT); Martina McBride, Keith Urban, Lee Ann Womack, Craig Morgan, Rascal Flatts, *Grand Ole Opry Live Encore* (GAC).

Sunday (9/10) - George Canyon, *Canadian CMA Show Preview* (GAC).

Monday (9/11) - Toby Keith, *Today* (NBC); Carolyn Dawn Johnson, Emerson Drive, more, *Canadian Country Music Awards* (GAC).

CMT Video Adds: Carrie Underwood "Before He Cheats," Chris Young "Drinkin' Me Lonely," Sugarland "Want To."

CMT Pure Country Add: Chris Young "Drinkin' Me Lonely," Kacey Jones "San Francisco Mabel Joy," Little Big Town "Good As Gone," Sugarland "Want To."

GAC Video Adds: Alan Jackson "Like Red On A Rose," Carrie Underwood "Before He Cheats," Chris Young "Drinkin' Me Lonely," Little Big Town "Good As Gone."

484-919-6333. Before making the move to Mobile, Caddy spent six years at WXTU/Philadelphia and was APD/MD/PM driver when he left. He's also worked at major market Country giants WMZQ/Washington, DC and WWWW/Detroit.

Clear Channel/Monterey-Salina-Santa Cruz's **Sam Segovia**, PD for CHR/Rhythmic KDON and Rhythmic Oldies KOCN has been named OM and will now add PD duties at Country KTOM. Segovia assumes the helm of the Country outlet vacated with the recent departure of **Dave Kirth** for West Coast Regional responsibilities with Rust Records.

Music: Radio veteran **Chris Costa** returns to KATM/Monterey

©2006 Country Aircheck™ — All rights reserved. To subscribe visit www.countryaircheck.com

HEY!!!!!!

IS ANYBODY LISTENING? Your Audience is Emerson Drive, "A Good Man" Has SMASH all over it!

Local Callout

WMIL	#1	OTP
WFMS	#3	OTP
KSON	#3	OTP
WNCY	#7	OTP
KNCI	#8	OTP
WGKX	#10	OTP
WQDR	#11	OTP
WWNU	#13	OTP
RateTheMusic	#15	OTP

National Callout America

#8 TP 25-44
#8 TP 25-34
#9 TP 25-54

Market Watch Cities OTP

Indianapolis #1
Rochester #3
Baton Rouge #5
Pittsburgh #6
Houston #8
Des Moines #8

New Adds Today:

WOGI/Pittsburgh
WKDF/Nashville
WBCT/Grand Rapids
KWNR/Las Vegas



CONVERTNOWCONVERTNOWCONVERTNOWCONVERTNOWCONVERTNOW

in an MD/evening air talent role, stepping in for **Joe Roberts**, who shifted within the cluster to CHR/Pop KHOP. Costa's first stint with KATM ran from 1992 to 1998, and she was back in the building today.

Gig Alert: KIZN/Boise, ID PD **Rich Summers** is looking for an evening talent. Send your aircheck and resume to him at 1419 West Bannock, Boise, ID 83702 or email it to rich.summers@citcomm.com.

Satellite: *Broken Bridges* costars **Toby Keith** and **Lindsey Haun** will be featured on *Popflix*, a show spotlighting new movies and their soundtracks on XM 27 Cinemagic. The show first aired Tuesday (9/5) and repeats Thursday at 8am ET, Friday at 8pm ET and at 10pm ET on both Saturday and Sunday.

Production: WXTU/Philadelphia weekend air talent **Angel Donato** has been upped to Producer for the Evans and Andie Morning Show. She can be reached at 610-822-1374 or angel@wxtu.com.

Hot Air

Warm air has been swirling around Capitol/Nashville the last few months as speculation ballooned that President/CEO **Mike Dungan** would be adding a second imprint. The label's 75% increase from 2004-2005 has not gone unnoticed by the powers that be. The newest blast blowing down the streets of Music Row says that will indeed be happening -- and that it is going to happen sooner rather than later. Fueling the chatter is word that VP/Promotion **Jimmy Harnen** has been talking to a few folks regarding the new label's VP-level promo post. That's all still very preliminary at this point. But if you've got the goods to lead a promo team at start-up under the direction of some of the best folks in this business, you might want to shoot Jimmy a call (615-269-2044) or an email (jimmy.harnen@emicap.com) now.

Business News

Lisa Smoot has been promoted to Director/Radio Promotion at **Jerry Duncan Promotions**. **Tammy Bishop** has been hired as Manager/Secondary Promotion for the company.

Cracker Barrel is continuing its foray into country music

FIRST AIRED

This week's birthdays:

Wednesday (9/6) - Mark Chesnutt, David Allan Coe, Trey Cooler, Kevin Erickson, Jeff Foxworthy, Sylvia Hutton, Mark Luna, Mel McDaniel

Thursday (9/7) - the late Buddy Holly, Rob Reid

Friday (9/8) - Troy Barnett, the late Patsy Cline, the late Jimmie Rodgers, Eddie Haskell, the late Harlan Howard

Saturday (9/9) - John McFee, Jack O'Malley, Bonnie Taggart

Sunday (9/10) - Kerry Harvick, Tommy Overstreet

Monday (9/11) - the late Jimmy Davis, Rosanne McDowell

with the Oct. 3 release of a second **Johnny Cash** collection titled *Johnny Cash: American Music Legends Volume Two*. The restaurant chain offers exclusive CDs from a number of artists including **Charlie Daniels**, **Sara Evans** and **Alison Krauss & Union Station**.

Yell Records will release **Hank Locklin's** *By The Grace of God: The Gospel Album* on Sept. 26.

Honorable Mentions

Congrats to **Mike & Martha Borchetta**, **Barbara Kelly** and the entire Lofton Creek staff on their first top 10 with Heartland's "I Loved Her First."

And while we're congratulating Borchettas, kudos to **Scott Borchetta** and the whole Big Machine team, who celebrated the company's first year in business with a backlot barbecue Friday at their Music Row offices.

Charitably Speaking

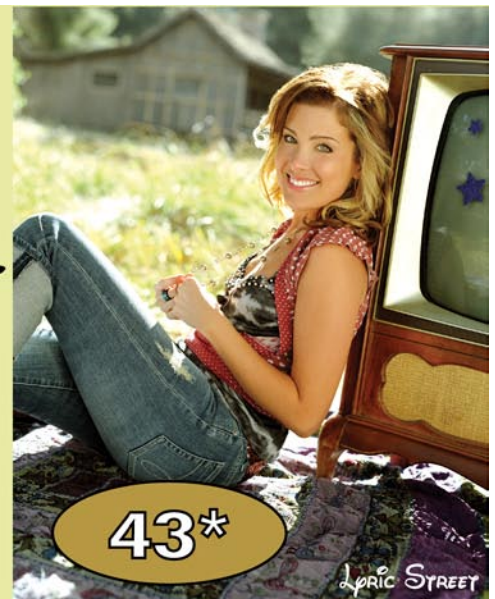
Rascal Flatts have designated proceeds from their Sept. 22 show at Nashville's Gaylord Entertainment Center to benefit the Monroe Carell Jr. Children's Hospital at Vanderbilt. The band

©2006 Country Aircheck™ — All rights reserved. Send news to news@countryaircheck.com

Sarah Buxton

"Innocence" is building believers

WAMZ/LOUISVILLE WSSL/GREENVILLE
WWQM/MADISON WCTQ/SARASOTA
WGH/NORFOLK KRST/ALBUQUERQUE
WQMX/AKRON



donated proceeds totaling \$600,000 to the hospital from a show at the same venue last year.

Alan Jackson brought his family along last week, including his mother and mother-in-law, to celebrate the platinum certification of his *Precious Memories* album. Noting the inspiration his mother Ruth and his wife's mother Nell provided, Jackson presented each with a \$100,000 check to be donated to the charity of their choice.

Friday was **Tracy Lawrence**, **Clint Black** and **Kyle Park** Day in Austin, TX, as the performers and KVET-KASE/Austin hosted an ice cream social for special needs children and played a benefit concert to raise funds for a wheelchair and brace-friendly ball field for Miracle League Athletes. The final tally is still being calculated, but is expected to clear \$10,000.

Artist News

Mostly Crew, a band comprised of crew members, opened **Kenny Chesney**'s final tour stop of the year outside Indianapolis over the weekend. The Road & The Radio Tour closed down after 68 shows, including eight stadiums. Chesney gave **Dierks Bentley**, who played every date, a 22-foot Sea Ray boat as a thank you.

Charlie Daniels was recently honored with the VFW's Hall of Fame Award during its 107th National Convention in Reno.

Bud Light is sponsoring **Dierks Bentley**'s Locked & Loaded tour, which opens Oct. 4 in Auburn, AL. **Miranda Lambert** and the **Randy Rogers Band** are also on the bill, with more than 30 dates expected.

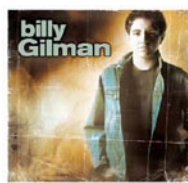
Electronic Arts has chosen **Trent Tomlinson**'s "Country Is My Rock" for the soundtrack of its *NASCAR 07* video game, which lands in stores Sept. 7.

Brooks & Dunn are featured on Coca-Cola packaging in Wal-Mart stores as part of the "Tailgate at Game Time at Wal-Mart with Brooks & Dunn" promotion. The duo's image will be featured on 2.9 million Coke and Diet Coke multi-packs selling exclusively at the massive retailer.

Vince Gill's These Days Tour will utilize almost 20 musicians and vocalists during various phases of his set which is drawn from his stylistically diverse four-disc album release

CHECK OUT

Albums released this week include:



Billy Gilman *Billy Gilman*
(Image Entertainment)

After releasing a series of albums following his breakthrough at age 11, Billy Gilman was forced take a break from performing to allow his voice to change. The one-time child star is 18 now, and back with an album that includes a duet

with Pam Tillis on "Almost Over (Getting Over You)" and first single "Southern Star."



Aaron Tippin *Now and Then*
(Nippit/Rust)

Tippin's latest is a hits package that ranges across his 15-year career for titles including "Workingman's Ph.D.," "There Ain't Nothing Wrong With The Radio," "I Got It Honest" and "Call of the Wild." The disc also features three new songs

including the single "Ready To Rock (In A Country Kinda Way)" and "He Believed."

Upcoming

- 9/12 **Randy Rogers Band** *Just A Matter Of Time* (Mercury)
- 9/19 **Steve Azar** *Indianola* (Dang/Midas)
- Carolina Rain** *Weather The Storm* (Equity)
- Kenny Chesney** *Live Those Songs Again* (BNA)
- Emerson Drive** *Countrified* (Midas)
- 9/26 **Alan Jackson** TBA (Arista)
- 10/3 **George Strait** *It Just Comes Natural* (MCA)
- 10/17 **Dierks Bentley** *Long Trip Alone* (Capitol)
- 10/24 **Katrina Elam** TBA (Universal South)
- 11/7 **Keith Urban** TBA (Capitol)

These Days. The record is out Oct. 17 and the tour opens Oct. 16 in New York.

Sarah Buxton's "Love Is A Trip" has been chosen by ABC for use in radio spots promoting the new fall drama *Men In Trees* which stars Anne Heche.

Clay Walker will headline the 18th annual Gstaad Festival in

©2006 Country Aircheck™ — All rights reserved. To subscribe visit www.countryaircheck.com

RESEARCH!
REACTION!



STEVE HOLY
'Brand New Girlfriend'

MB: 2*
RR: 2*

Top 5 Spins at Local Callout Stations:
WUSN, KEEY, WDAF, KAJA, WMIL, WKLB, WUBE, WYGY, KUPL, KWJJ, WKIS,
KNIX, KMLE, KRTY, WOGI, WCOL, WWYZ, WKDF, WXBQ, KIIM, WSSL



Switzerland this weekend. **Rhett Akins** is also on the bill.

Rascal Flatts' Me And My Gang tour has added 13 dates through mid-November and organizers expect the tour to top one million in attendance by that point. **Gary Allan** and **Eric Church** are also on the bill.

Martina McBride has recorded a "duet" with the late **Dean Martin**, adding her vocals to Martin's 1959 recording of "Baby, It's Cold Outside." The track will be included on Martin's *Christmas With Dino* album that will be released on Sept. 12. McBride will be performing the duet version of the song on her Joy of Christmas tour commencing Nov. 24.

(continued from page 1)

Will the PPM Be Good For Country? That's what we all really want to know. Albright says, "The new measurement technologies simply can't be worse than diaries have been over the last few years in consistently finding and measuring radio usage by Country's core audience. Over the long term, the fact that Country partisans tend to be more loyal to Country radio and be more responsive when asked to participate in a diary survey has been an advantage to Country. But with increased incentives of all sorts to homes with 18-34 males in them, enhanced survey treatments, more money and special language treatment for ethnic homes, Arbitron has unintentionally begun to discriminate against country. I'm hopeful that panel sampling may actually give Country a fairer and more consistent shake, as our hottest zips often are located on the ex-urban fringes of metro areas meaning that they get missed as Arbitron works hard to find young male and ethnic homes."

Harder To Hype: That's one surprising conclusion Albright came away with in regards to the PPM vs. diary methodology. She said, "It will be harder, not easier, to 'hype' PPM usage through artificial methods. Even though it is true that cumes of Country stations -- along with most other formats as well -- almost double, the impact of the lighter user cumes (P4's and P5's) is tiny on average quarter hours, so heavy users (P1's) are still extremely important to any station's consistent success. Since the folks who agree to carry the Arbitron PPM will remain in the panel for as long as two years, that panel

better include a consistent number of your P1's or it's going to be a very dry couple of years for you.

"This also means that the urban legends that have already started of various attempts to hype the PPM by, for example, driving all over town with sound trucks, having your station on in shopping centers or at stadiums, etc. will actually have less impact than direct marketing tactics being employed today -- unless of course a station finds out where a lot of their competition's PPM households are and follows those people around all day, every day, every week."

Old Dog, New Tricks: Asked what radio will have to do differently in a PPM era, she notes, "Radio is going to have to learn to charge for the 'spikes' in listening that happen during big sporting events, immediate breaking news, major promotions etc. Immediacy will become increasingly important. In the diary, consistency wins. In the PPM, special events drive up real usage, which can be measured down to the exact minute. 'Average' quarter hour shares will remain one way to buy radio. But, a new means of selling our medium will be to charge *a lot* for the 'total reach' which happens when your station owns an event that 'everyone' cares about. The opposite of this is true as well, of course. When a station does something that costs it listening, PPM will show exactly when that happens too, by co-relating the PPM usage data to monitored on-air events at specific times."

Albright concludes, "I left thinking that it will be wonderful to see some heated competition between the PPM and the Media Audit/Ipsos emerging technologies so that the marketplace can decide which one will be best for radio and the country format in the next several years. At the moment, I still have many more questions than answers, but am very excited about the things we are all going to learn very soon about how our listeners use our radio stations in a time of emerging media and new technologies." ☺

©2006 Country Aircheck™ — All rights reserved. Send news to news@countryaircheck.com

in the last ten years...

- Bill Clinton denies having "sexual relations" with Monica Lewinsky (1998)
- "American Idol" debuts (2002)
- Boston Red Sox break the curse and win the World Series for the first time in 86 years (2004)



www.capitolnashville.com

LW	TW	Artist/Title (Label)	Total Points	+/- Points	Total Plays	+/- Plays	Audience	+/- Aud	Stations	ADDS
1	1	WRECKERS/Leave The Pieces (Warner Bros.)	13565	-335	4749	-171	41.124	-1.009	125	0
2	2	STEVE HOLY/Brand New Girlfriend (Curb)	12772	141	4569	72	38.367	.627	125	0
4	3	GEORGE STRAIT/Give It Away (MCA)	12748	809	4489	289	38.291	2.460	124	0
3	4	RODNEY ATKINS/If You're Going Through Hell (Curb)	12081	-462	4105	-231	37.036	-1.353	125	0
5	5	LITTLE BIG TOWN/Bring It On Home (Equity)	11516	-257	4179	-82	34.204	-.634	125	0
7	6	BROOKS & DUNN/Building Bridges (Arista)	10983	377	3874	160	32.157	1.093	125	0
6	7	FAITH HILL/Sunshine & Summertime (Warner Bros.)	10791	-52	3741	11	31.196	-.513	125	0
8	8	JOSH TURNER/Would You Go With Me (MCA)	10472	572	3762	209	31.630	2.238	125	1
12	9	HEARTLAND/I Loved Her First (Lofton Creek)	8657	1099	2828	362	25.747	3.696	122	9
9	10	DIERKS BENTLEY/Every Mile A Memory (Capitol)	8287	423	2974	147	24.524	1.705	125	1
13	11	KEITH URBAN/Once In A Lifetime (Capitol)	8085	1769	2725	629	24.705	4.634	122	5
10	12	PAT GREEN/Feels Just Like It Should (BNA)	7993	162	2707	75	22.977	.507	124	0
11	13	BILLY CURRINGTON/Why, Why, Why (Mercury)	7392	-227	2755	5	20.939	-.934	125	0
19	14	KENNY CHESNEY/You Save Me (BNA)	6777	1473	2322	520	19.498	4.250	124	4
14	15	DANIELLE PECK/Findin' A Good Man (Big Machine)	6413	233	2364	58	17.396	.697	125	2
16	16	SUGARLAND/Want To (Mercury)	6275	336	2180	155	17.755	1.138	123	3
18	17	ALAN JACKSON/Like Red On A Rose (Arista)	6215	449	2232	160	16.928	.988	125	1
15	18	BIG & RICH/8th Of November (Warner Bros.)	5779	-329	1997	-83	15.859	-.866	124	0
25	19	CARRIE UNDERWOOD/Before He Cheats (Arista)	5181	1027	1795	348	16.158	4.155	121	10
20	20	LONESTAR/Mountains (BNA)	5133	-107	1839	-42	14.180	-.182	124	1
21	21	BLAINE LARSEN/I Don't Know What... (Giantslayer/BNA)	4778	-146	1737	4	12.793	-.430	121	2
24	22	RASCAL FLATTS/Life Is A Highway (Lyric Street)	4730	400	1648	123	15.003	.800	115	4
22	23	MONTGOMERY GENTRY/Some People Change (Columbia)	4620	231	1657	69	12.418	.691	123	0
17	24	TRACE ADKINS/Swing (Capitol)	4619	-1181	1667	-463	12.042	-3.885	122	1
23	25	JACK INGRAM/Love You (Big Machine)	4536	157	1560	93	12.163	.578	122	8

©2006 Country Aircheck™ — All rights reserved. To subscribe visit www.countryaircheck.com**"You'll Always Be My Baby" --**

the new smash from CMA Female Vocalist Nominee --

*Sara Evans***20 NEW ADDS THIS WEEK!****ADD IT NOW!**Watch and Vote for Sara on
Dancing With The Stars
starting September 12th**A Vote for Sara is a Vote for COUNTRY MUSIC!**

LW	TW	Artist/Title (Label)	Total Points	+/- Points	Total Plays	+/- Plays	Audience	+/- Aud	Stations	ADDS
28	26	RASCAL FLATTS/My Wish (Lyric Street)	3914	1060	1349	402	11.793	3.489	105	12
26	27	GRETCHEN WILSON/California Girls (Columbia)	3642	-419	1214	-174	9.453	-1.168	123	1
29	28	TIM MCGRAW/My Little Girl (Curb)	3486	752	1344	311	9.941	2.741	107	22
27	29	TAYLOR SWIFT/Tim McGraw (Big Machine)	3293	389	1159	124	8.143	.734	116	12
30	30	JASON ALDEAN/Amarillo Sky (BBR)	2934	309	1174	116	7.846	.876	110	4
33	31	TOBY KEITH/Crash Here Tonight (Show Dog)	2915	968	1107	344	7.830	2.375	110	15
32	32	EMERSON DRIVE/A Good Man (Midas)	2483	12	1064	17	6.492	.162	105	3
34	33	TRENT TOMLINSON/One Wing In The Fire (Lyric Street)	1971	105	794	29	4.333	.297	106	5
38	34	JO DEE MESSINA/It's Too Late To Worry... (Curb)	1770	379	714	156	4.362	1.034	110	4
36	35	CAROLINA RAIN/Get Outta My Way (Equity)	1759	75	670	36	4.723	.191	99	0
35	36	DARRYL WORLEY/Nothin' But A Love Thang (903)	1652	-105	658	-20	3.843	-.621	100	0
39	37	CRAIG MORGAN/Little Bit Of Life (BBR)	1290	196	550	74	3.251	.436	70	12
42	38	LEANN RIMES/Some People (Curb/Asylum)	1144	208	481	101	2.577	.562	84	5
Debut 39		BRAD PAISLEY/She's Everything (Arista)	1066	607	394	247	2.668	1.481	73	13
44	40	ERIC CHURCH/Two Pink Lines (Capitol)	1040	273	381	101	2.784	.776	61	7
40	41	JOE NICHOLS/I'll Wait For You (Universal South)	1013	24	417	14	2.341	-.130	57	10
41	42	PHIL VASSAR/The Woman In My Life (Arista)	985	10	380	4	1.997	-.235	63	7
43	43	SARAH BUXTON/Innocence (Lyric Street)	950	148	352	59	2.231	.356	54	7
45	44	VINCE GILL/The Reason Why (MCA)	928	194	310	57	1.924	.388	44	5
Debut 45		KATRINA ELAM/Love Is (Universal South)	821	271	346	81	1.057	.128	75	4
Debut 46		SARA EVANS/You'll Always Be My Baby (RCA)	807	175	245	70	2.189	.396	38	14
Debut 47		LEE ANN WOMACK/Finding My Way Back Home (Mercury)	795	217	228	82	2.153	.508	38	5
49	48	LOST TRAILERS/Why Me (BNA)	782	121	273	50	1.689	.348	57	1
Debut 49		CHRIS YOUNG/Drinkin' Me Lonely (RCA)	755	148	310	49	1.332	.365	45	2
Debut 50		RANDY ROGERS BAND/Kiss Me In The Dark (Mercury)	742	200	165	44	2.587	.952	16	2

©2006 Country Aircheck™ — All rights reserved. Send news to news@countryaircheck.com

THEY HEAR IT... THEY BUY IT!

Jason Aldean

"Amarillo Sky"

ONE OF ONLY 4 ALBUMS IN THE TOP 40 TO HAVE A SALES INCREASE LAST WEEK!

TOP 10 RESEARCH: KANSAS CITY, MEMPHIS, NASHVILLE, TUCSON, TULARE, GREEN BAY

Now a Top 20 Single Download!
Last 3 weeks 28 – 25 – 18 on the Big Champagne Chart!

Conversions include: WEZL, WSM, WCKT, KTYS

CRAIG MORGAN

"Little Bit of Life"

New Adds Include:
WSIX, WAMZ, WKIS, WOGI, WSLC, KFDI, KJJY, KNIX, WRBT, KCCY, WTQR & WPKX...

MB 37* +70 spins
R&R 39* +123 spins!

Playing Craig Morgan music is the closest thing to a SURE BET you are going to find... 

HIS LAST THREE SINGLES ARE ALL TESTING TOP 30 Mediabase!!

Aircheck Add Leaders

TIM MCGRAW/My Little Girl (Curb)	22
TOBY KEITH/Crash Here Tonight (Show Dog)	15
BRAD PAISLEY/She's Everything (Arista)	13
SARA EVANS/You'll Always Be My Baby (BNA)	13
CRAIG MORGAN/Little Bit Of Life (BBR)	12
RASCAL FLATTS/My Wish (Lyric Street)	12
TAYLOR SWIFT/Tim McGraw (Big Machine)	12
JOE NICHOLS/I'll Wait For You (Universal South)	10
CARRIE UNDERWOOD/Before He Cheats (Arista)	10

Leading Point Gainers

KEITH URBAN/Once In A Lifetime (Capitol)	+1769
KENNY CHESNEY/You Save Me (BNA)	+1473
HEARTLAND/I Loved Her First (Lofton Creek)	+1099
RASCAL FLATTS/My Wish (Lyric Street)	+1060
CARRIE UNDERWOOD/Before He Cheats (Arista)	+1027
TOBY KEITH/Crash Here Tonight (Show Dog)	+968
GEORGE STRAIT/Give It Away (MCA)	+809
TIM MCGRAW/My Little Girl (Curb)	+752
BRAD PAISLEY/She's Everything (Arista)	+607
JOSH TURNER/Would You Go With Me (MCA)	+572

Leading Spin Gainers

KEITH URBAN/Once In A Lifetime (Capitol)	+629
KENNY CHESNEY/You Save Me (BNA)	+520
RASCAL FLATTS/My Wish (Lyric Street)	+402
HEARTLAND/I Loved Her First (Lofton Creek)	+362
CARRIE UNDERWOOD/Before He Cheats (Arista)	+348
TOBY KEITH/Crash Here Tonight (Show Dog)	+344
TIM MCGRAW/My Little Girl (Curb)	+311
GEORGE STRAIT/Give It Away (MCA)	+289
BRAD PAISLEY/She's Everything (Arista)	+247
JOSH TURNER/Would You Go With Me (MCA)	+209

Aircheck Top Recurrents

	Points
BRAD PAISLEY/The World (Arista)	7948
KENNY CHESNEY/Summertime (BNA)	7440
TOBY KEITH/A Little Too Late (Show Dog)	6370
CARRIE UNDERWOOD/Don't Forget... (Arista)	5236
GARY ALLAN/Life Ain't Always Beautiful (MCA)	5005
PHIL VASSAR/Last Day of My Life (Arista)	4546
JOSH TURNER/Your Man (MCA)	4257
RASCAL FLATTS/What Hurts The Most (Lyric Street)	4130
KEITH ANDERSON/Every Time I Hear... (Arista)	3984
RASCAL FLATTS/Me And My Gang (Lyric Street)	3935
BON JOVI w/J. NETTLES/Who Says... (Mercury)	3836
JASON ALDEAN/Why (BBR)	3718
LEANN RIMES/Something's Gotta... (Curb/Asylum)	3187
BILLY CURRINGTON/Must Be Doin'... (Mercury)	2988
DIERKS BENTLEY/Settle For a Slowdown (Capitol)	2843
JACK INGRAM/Wherever You Are (Big Machine)	2827
KEITH URBAN/Better Life (Capitol)	2785
TOBY KEITH/As Good As I Once Was (Show Dog)	2540
JAKE OWEN/Yee Haw (RCA)	2513
CARRIE UNDERWOOD/Jesus, Take The Wheel (Arista)	2507

©2006 Country Aircheck™ — All rights reserved. To subscribe visit www.countryaircheck.com

JOHN ANDERSON
IF HER LOVIN' DON'T KILL ME

"John Anderson has been EN-Riched... This one's "Money in the Bank" and we're proud to have been the first station in America to make a deposit... as it continues to pay dividends..." -Mike Culotta-OM WQYK

Early believers: KMPS, WQYK, KBEQ, KFKF, KEGA, WBEE, WESC, KATM, WOGK, WNKT, WKCN, KDRK, KKCS, WUSY, WFBE, WUSJ, KOUL, KFTX, WXBW

WB NASHVILLE

RAY-BAN

Aircheck Activity

STEVE AZAR/You Don't Know... (Dang/ Midas)

644 pts, 307 spins

3 ADDS: **KTYS, KZSN, WCTO**

Stations with 7 or more spins: 18

Significant spins: **KBEQ** (20), **WGGY** (18), **KJUG** (17), **WFUS** (14), **KTOM** (13)

PAT GREEN/Way Back Texas (BNA)

500 pts., 121 spins

0 ADDS

Stations with 7 or more spins: 5

Significant spins: **KTYS** (48), **KSCS** (27), **KILT** (21), **KPLX** (14), **KASE** (10)

TRENT WILLMON/So Am I (Columbia)

390 pts., 125 spins

3 ADDS: **KPLX, KQFC, KUBL**

Stations with 7 or more spins: 4

Significant spins: **KPLX** (11), **KKNG** (9), **KJUG** (8), **KUBL** (7)

TIM MCGRAW/I've Got Friends That Do (Curb)

343 pts., 38 spins

0 ADDS

Stations with 7 or more spins: 1

Significant spins: **WUSN** (33)

TRACY LAWRENCE/Find Out Who Your Friends Are (Rocky Comfort/CO5)

327 pts., 140 spins

2 ADDS: **KHKI/Des Moines, KJUG/Visalia, CA**

Stations with 7 or more spins: 6

Significant spins: **KAJA** (39), **KSOP** (15), **KXKC** (13), **KKNG** (12), **KTEX** (11)

TRACE ADKINS/Ladies Love Country Boys (Capitol)

317 pts., 97 spins

4 ADDS: **KSOP, WGAR, WWGR, WWNU**

Stations with 7 or more spins: 0

Aircheck Activity includes songs that have a minimum of 300 airplay points, have shown growth in two of the past three weeks and have not yet charted.

Air Dates

September 11

—no adds—

September 18

ASHLEY MONROE w/R. DUNN/I Don't Want To (Columbia)

TRACE ADKINS/Ladies Love Country Boys (Capitol)

September 25

KEITH ANDERSON/Podunk (Arista)

LITTLE BIG TOWN/Good As Gone (Equity)

October 9

KENNY ROGERS/The Last Ten Years (Capitol)

October 16

JASON MICHAEL CARROLL/Lookin' At You (Arista)

WHERE TO REACH US

If you haven't signed up already, subscribe to **Country Aircheck** by visiting us on the web at www.countryaircheck.com. It's free!

You'll get direct in-box notification of when and where to download the latest **Country Aircheck Music Edition**, and you'll be on the list for our daily news product, coming soon!

Got news? Direct it to news@countryaircheck.com. Rumors, releases, trade photos, wildly incoherent ramblings – bring 'em on! Send your laundry and let us sort it out.

That's also a fine address for reaching **Lon Helton, Chuck Aly** and the fast-growing **Country Aircheck** team.

©2006 Country Aircheck™ — All rights reserved. Send news to news@countryaircheck.com

RADIO ALGEBRA

EV > CL

The Entertainment Value Must Always Exceed the Cost of Listening.

Albright & O'Malley
Country Radio Specialists